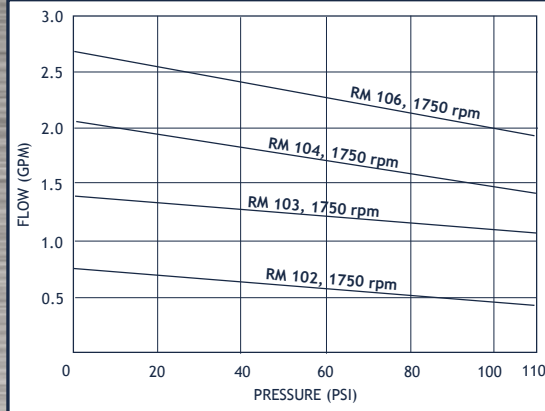


# MAG DRIVE GEAR PUMPS

## OBERDORFER



1/4" and 1/2" Chemsteel Series



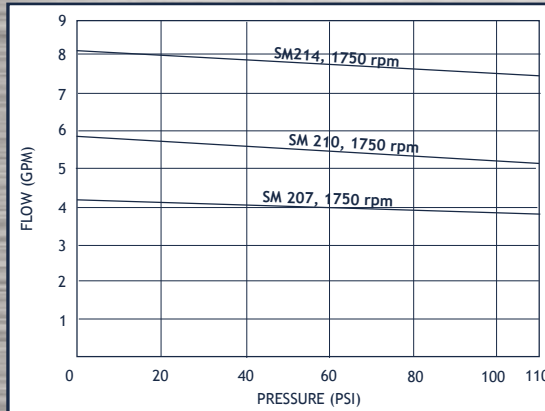
### UP TO 2.7 GPM, 110 PSI

- 316SS, Hastelloy® or Ryton body
- Gears available in 316SS, W88 Stainless, Hastelloy® C, Ryton®, Teflon® or PEEK
- Carbon, Teflon® or Rulon bearings
- Sealless design; Neodymium Iron or Samarium Cobalt magnet options
- Positively lubricated center support bearing
- Mounts directly to NEMA or IEC-C face motors

## OBERDORFER



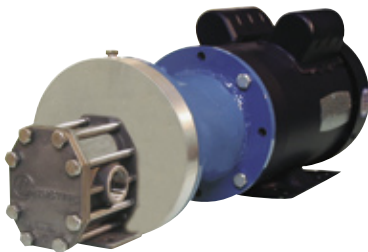
1/2" Chemsteel Series



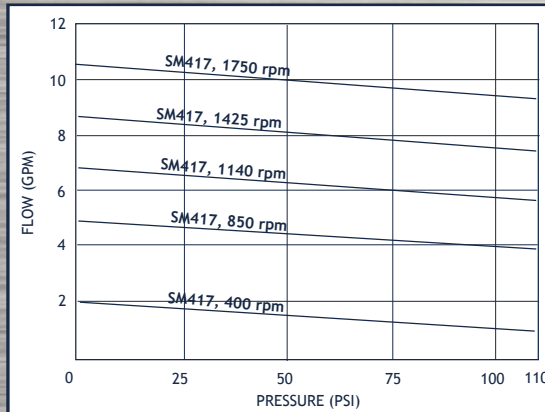
### UP TO 8.2 GPM, 110 PSI

- 316SS, Hastelloy® or Ryton body
- Gears available in 316SS, W88 Stainless, Hastelloy® C, Ryton®, Teflon® or PEEK
- Carbon, Teflon® or Rulon bearings
- Sealless design; Neodymium Iron or Samarium Cobalt magnet options
- Positively lubricated center support bearing
- Mounts directly to NEMA or IEC-C face motors

## OBERDORFER



3/4" Chemsteel Series



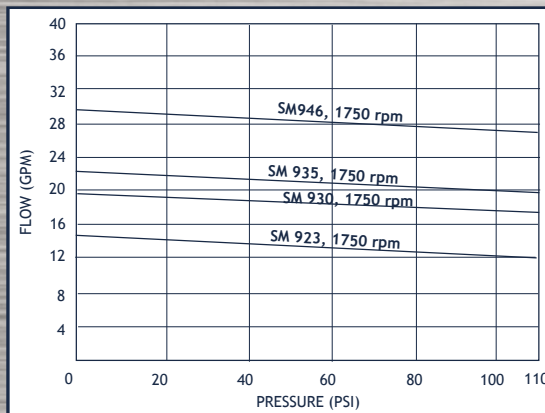
### UP TO 10.5 GPM, 110 PSI

- 316SS, Hastelloy® or Ryton body
- Gears available in 316SS, W88 Stainless, Hastelloy® C, Ryton®, Teflon® or PEEK
- Carbon, Teflon® or Rulon bearings
- Sealless design; Neodymium Iron or Samarium Cobalt magnet options
- Positively lubricated center support bearing
- Mounts directly to NEMA or IEC-C face motors

## OBERDORFER



1 1/2" Chemsteel Series



### UP TO 29 GPM, 110 PSI

- 316SS, Hastelloy® or Ryton body
- Gears available in 316SS, W88 Stainless, Hastelloy® C, Ryton®, Teflon® or PEEK
- Carbon, Teflon® or Rulon bearings
- Sealless design; Neodymium Iron or Samarium Cobalt magnet options
- Positively lubricated center support bearing
- Mounts directly to NEMA or IEC-C face motors