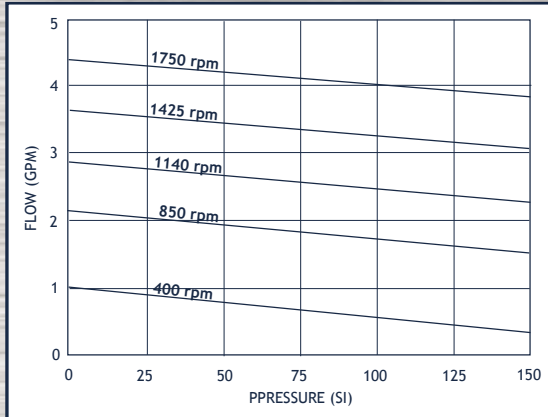


316SS AND HASTELLOY® GEAR PUMPS

UP TO 4.4 GPM, 150 PSI

- 316SS or Hastelloy® C body
- 316SS, Hastelloy® C, W88 Stainless, Teflon®, Ryton® and PEEK gear material options
- Carbon, Teflon® or Rulon bearings available
- Several choices of mechanical seals, packing or lip seals
- Foot mounted or C-Face mounting arrangements



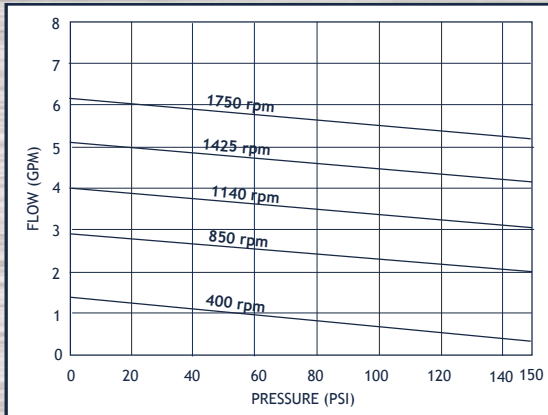
OBERDORFER



1/2" S207 Chemsteel Series

UP TO 6.2 GPM, 150 PSI

- 316SS or Hastelloy® C body
- 316SS, Hastelloy® C, W88 Stainless, Teflon®, Ryton® and PEEK gear material options
- Carbon, Teflon® or Rulon bearings available
- Several choices of mechanical seals, packing or lip seals
- Foot mounted or C-Face mounting arrangements



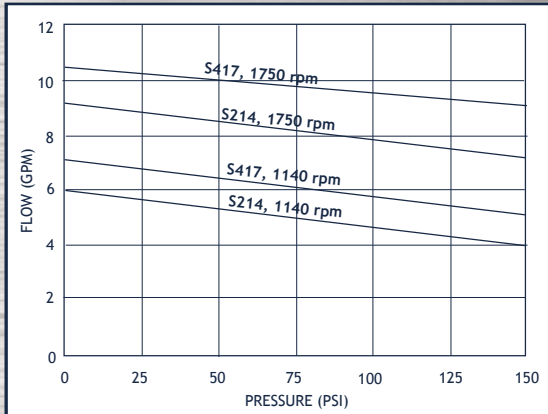
OBERDORFER



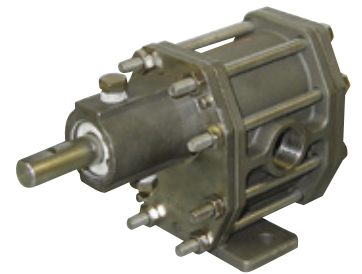
1/2" S210 Chemsteel Series

UP TO 10.5 GPM, 150 PSI

- 316SS or Hastelloy® C body
- 316SS, Hastelloy® C, W88 Stainless, Teflon®, Ryton® and PEEK gear material options
- Carbon, Teflon® or Rulon bearings available
- Several choices of mechanical seals, packing or lip seals
- Foot mounted or C-Face mounting arrangements



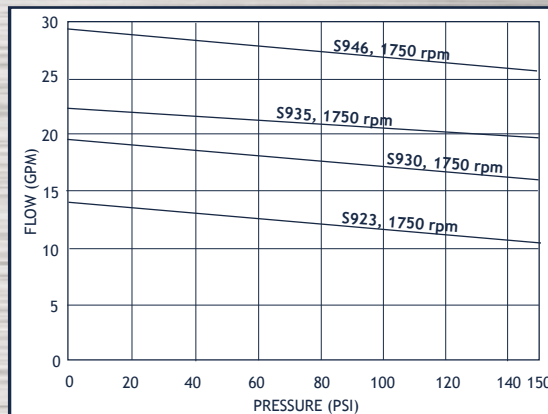
OBERDORFER



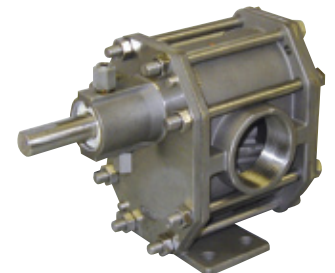
S214 (1/2") and S417 (3/4") Series

UP TO 30 GPM, 150 PSI

- 316SS or Hastelloy® C body
- 316SS, Hastelloy® C, W88 Stainless, Teflon®, Ryton® and PEEK gear material options
- Carbon, Teflon® or Rulon bearings available
- Several choices of mechanical seals, packing or lip seals
- Foot mounted or C-Face mounting arrangements



OBERDORFER



S923-S946 1 1/2" Series