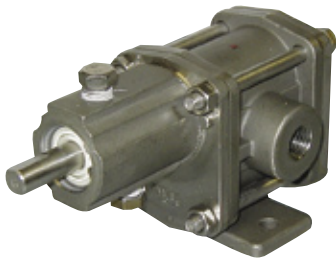
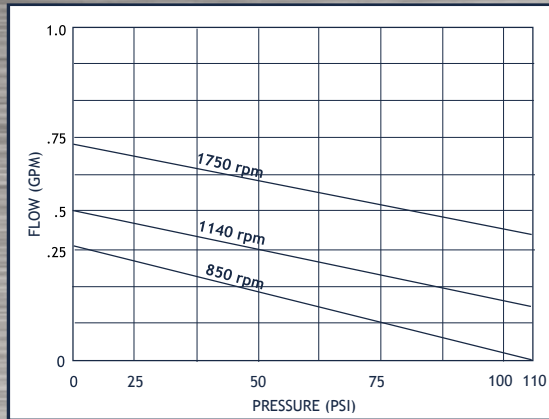


316SS AND HASTELLOY® GEAR PUMPS

OBERDORFER



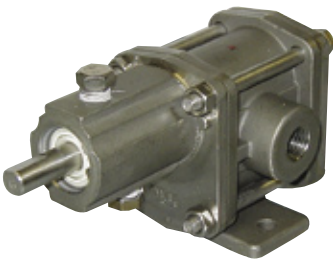
1/4" R102 Chemsteel Series



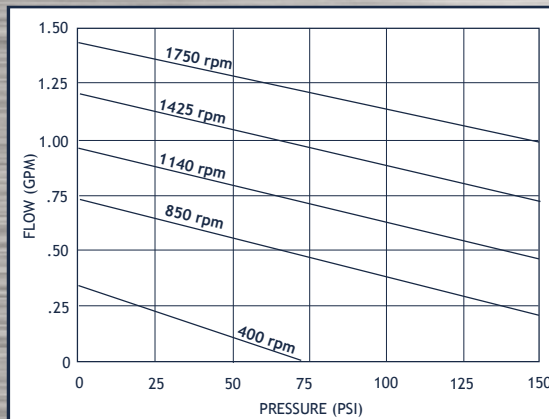
UP TO .6 GPM, 110 PSI

- 316SS or Hastelloy® C body
- 316SS, Hastelloy® C, W88 Stainless, Teflon®, Ryton® and PEEK gear material options
- Carbon, Teflon® or Rulon bearings available
- Several choices of mechanical seals, packing or lip seals
- Foot mounted or C-Face mounting arrangements

OBERDORFER



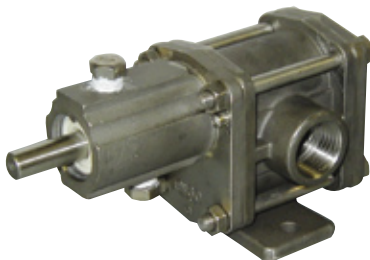
1/4" R103 Chemsteel Series



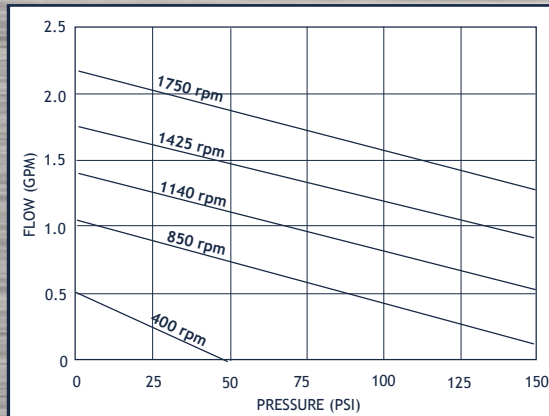
UP TO 1.5 GPM, 150 PSI

- 316SS or Hastelloy® C body
- 316SS, Hastelloy® C, W88 Stainless, Teflon®, Ryton® and PEEK gear material options
- Carbon, Teflon® or Rulon bearings available
- Several choices of mechanical seals, packing or lip seals
- Foot mounted or C-Face mounting arrangements

OBERDORFER



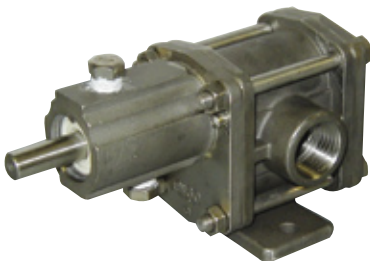
1/2" R104 Chemsteel Series



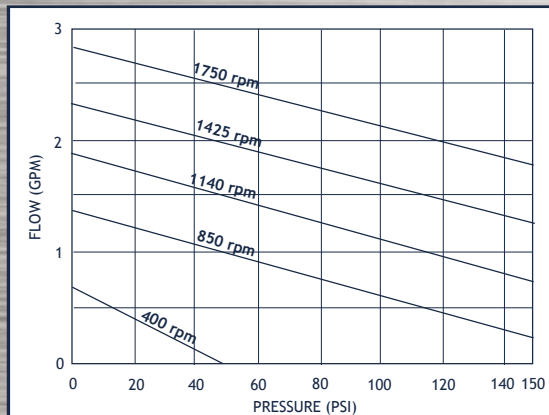
UP TO 2.2 GPM, 150 PSI

- 316SS or Hastelloy® C body
- 316SS, Hastelloy® C, W88 Stainless, Teflon®, Ryton® and PEEK gear material options
- Carbon, Teflon® or Rulon bearings available
- Several choices of mechanical seals, packing or lip seals
- Foot mounted or C-Face mounting arrangements

OBERDORFER



1/2" R106 Chemsteel Series



UP TO 2.8 GPM, 150 PSI

- 316SS or Hastelloy® C body
- 316SS, Hastelloy® C, W88 Stainless, Teflon®, Ryton® and PEEK gear material options
- Carbon, Teflon® or Rulon bearings available
- Several choices of mechanical seals, packing or lip seals
- Foot mounted or C-Face mounting arrangements