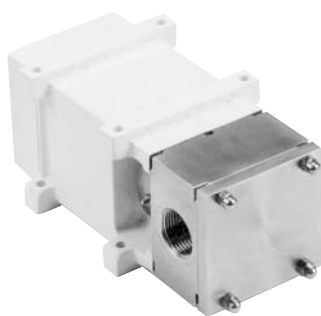




### JABSCO



### S2 SERIES

### JABSCO



### A1 THROUGH E2 SERIES

## 24 SERIES

PUMP MODEL	S2	A1	A2	B1	B2	C1	C2	D1	D2	E2
Port Size (inch)	1	1 or 1 1/2	1 1/2 or 2	1 1/2 or 2	2 or 3	2 or 3	3 or 4	3 or 4	4	6
Displacement gall/100 rev	0.94	2.8	4.9	6.5	9.9	16.5	24.7	32.2	42.5	92.4
Maximum Flow US GPM	9.4	26	47	63	96	129	173	209	264	554
Maximum Pressure psi	100	217	150	217	150	200	150	175	130	175
Maximum Speed (RPM)	1000	960	960	960	960	720	700	650	620	600
Dimensions LxBxH inches	10x6x4	14x8x8	15x8x8	17x9x9	18x9x9	21x11x13	22x12x13	25x13x14	26x14x14	31x17x17
Weight (bareshaft) lbs	20	30	40	63	73	153	166	247	262	660
Temperature °F	-40 to 392									
Viscosity cP	1 to 1 million									

## OPTIONS

### ● SEALS

**Single mechanical seals** are of hygienic design. Materials include carbon, stainless steel, tungsten carbide, and silicon carbide.

**Low pressure flushed seals** utilize the same single mechanical seal with an additional housing. A low pressure flush liquid washes away crystallizing products or liquids which 'skin over'.

Double mechanical seals utilize all the components from single seals. For hazardous, toxic, highly abrasive or sterile products.

**Gland packing** – a cost effective general purpose seal for non-hazardous liquids. Used on either a stainless steel or hard chrome plated anti-wear sleeve.

**O ring seals** – another low cost seal option used primarily for self lubricating products such as dairy products.

### ● ROTORS

**Tri-lobe rotors** in stainless steel handle 90% of all applications. The traditional combination of efficiency, solids handling, low and high viscous product capability.

**Bi-lobe rotors** in stainless steel for exceptional handling of delicate, soft solids such as fruit pieces and vegetables.

**Rubber covered tri-lobe** rotor to cope with small hard solids such as small bone fragments or ice crystals.

### ● CONNECTIONS

All US and European standards including DIN, SMS, RJT, IDF, Tri-Clamp, NPT & BSP. Most pumps available with 2 different sizes, all fully interchangeable.

### ● ELASTOMERS

Nitrile, Viton, EPDM, PTFE or Kalrez product contact joints are available.

### ● OTHER OPTIONS

Pump head temperature control jackets	Hydraulic drive
Integral pressure relief valve	Rectangular inlet for "Hopper Feed"
Integral speed reduction unit	Enlarged ports
Electro-polish	

## DESIGN FEATURES

### ● ADAPTABILITY

The modular design of this pump uses "bolt on" features which allow quick and easy interchange of parts to enable exact specification of the pump to suit any application... from stock!

### ● RUGGED DESIGN

The bearing frame design utilizes large shaft diameters mounted in high specification taper roller bearings, fitted into rigid pillars which form an integral part of the high grade alloy housing. These ensure maximum shaft stiffness in order to avoid premature pump failure due to overpressure or other abuse.

### ● LOW MAINTENANCE

The shaft, bearing, and gear assemblies are fully immersed in an oil bath to give maximum life even at extremes of operating conditions. The timing gears are easily accessible at the rear of the pump in the unlikely event that re-timing should become necessary. Rotors are all fully interchangeable making the need to re-time (which is a problem associated with so many other rotary lobe and circumferential piston pumps) virtually non-existent.

### ● IMPROVED HYGIENIC TECHNOLOGY

Fully swept pump chamber together with sealed rotor spline, accessible seals, and approved sealing components ensure the pump meets the stringent requirements of major international customers. No modifications necessary for CIP service.