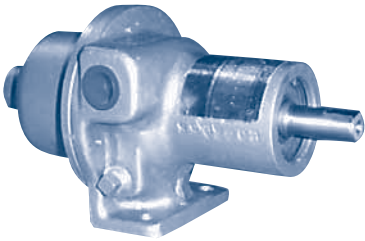
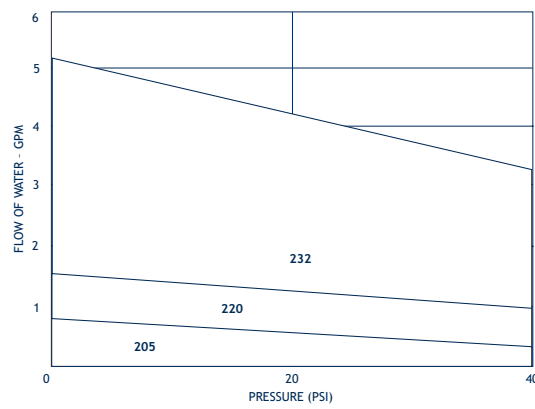


# PROGRESSING CAVITY

## ROBBINS and MYERS



Pedestal or Close-Coupled



## UP TO 5 GPM, 40 PSI

- Temperatures to 240° F
- Self-priming to 25 ft. (when wet)
- Pedestal Configuration: aluminum or 316SS housing
- Close-coupled configuration: Phenolic plastic housing
- Elastomer Options: nitrile, EPDM and FPM

CONTENTS

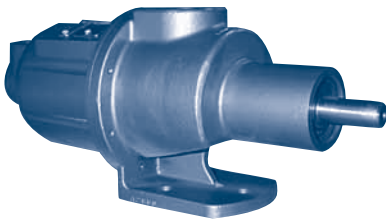
INDEX

NEXT

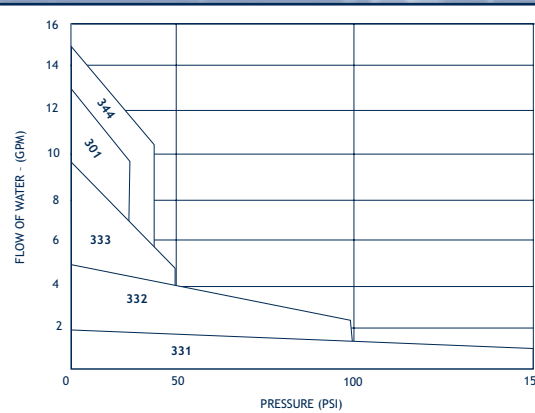
BACK

HOME

## ROBBINS and MYERS



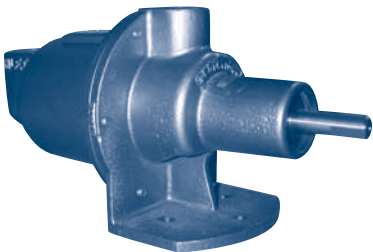
Pedestal or Close-Coupled



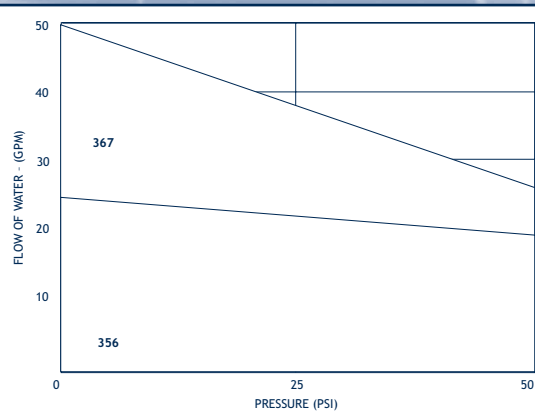
## UP TO 15 GPM, 150 PSI

- Phenolic series rated to 25 psi
- Temperatures to 210° F (160° F phenolic series)
- Self-priming to 25 ft. (when wet)
- Housing Construction: cast iron, 316SS or phenolic plastic
- Elastomer Options: nitrile, EPDM and FPM

## ROBBINS and MYERS



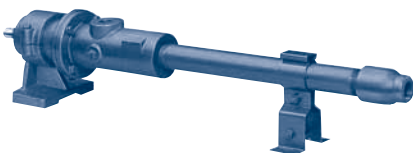
Pedestal or Close-Coupled



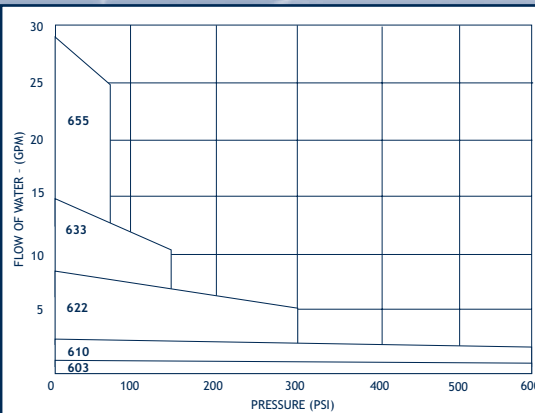
## UP TO 50 GPM, 50 PSI

- Temperatures to 240° F
- Packing or mechanical seals
- Self-priming to 25 ft. (when wet)
- Housing Construction: cast iron, 316SS
- Elastomer Options: nitrile, EPDM and FPM

## ROBBINS and MYERS



Pedestal Configuration



## UP TO 30 GPM, 600 PSI

- Temperatures to 210° F
- Packing or mechanical seals
- Self-priming lifts when wet to: 25 ft. for packing gland series, 15 ft. for mechanical seal series
- Construction: cast iron
- Elastomer Options: nitrile and EPDM