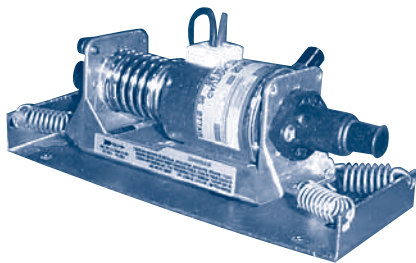
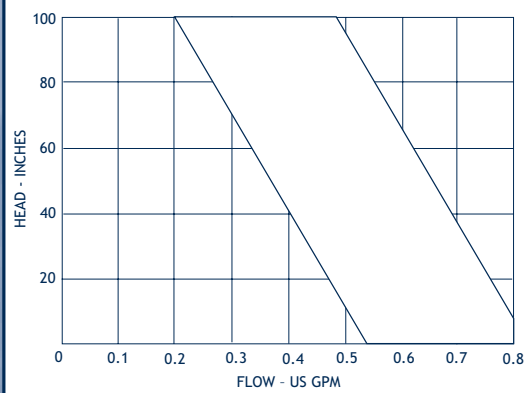


# OSCILLATING PUMPS

## GRI



High Flow, Low Pressure

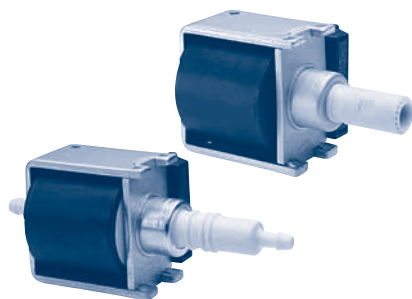


## UP TO .8 GPM, 8.3' TDH

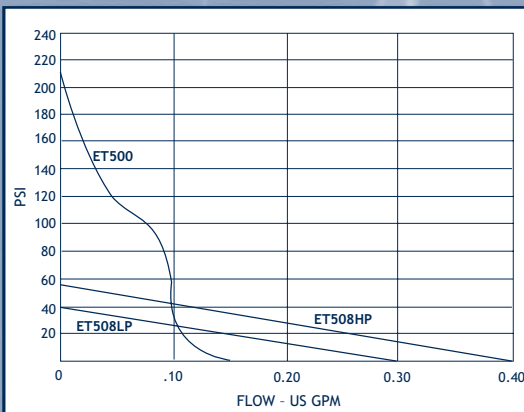
- Temperatures to 104° F
- Self-priming to 4'
- Ports: 1/2" barb
- Voltages: 115 and 230 vac 50/60 Hz
- Power Consumption: 20-26 watts
- Wetted Parts:  
Housing: Polypropylene  
Bellows: EPDM

- CONTENTS
- INDEX
- NEXT
- BACK
- HOME

## FLOJET



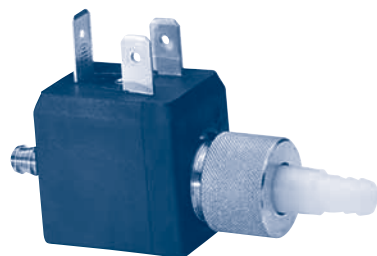
Medium Flow, Medium Pressure



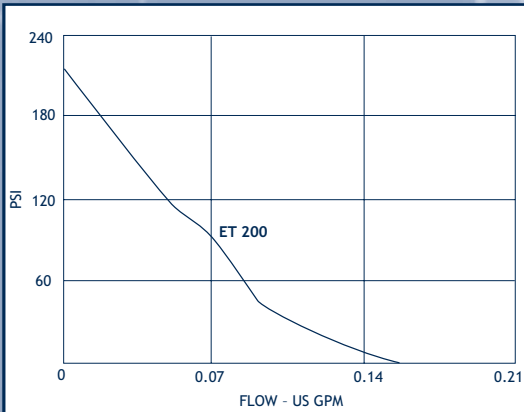
## UP TO .40 GPM, 210 PSI

- Temperatures to 160° F
- Self-priming to 6' (ET508), 2.6' (ET500)
- Ports: 1/4" barb (1/8" FPT available)
- Voltages: 115 vac, 60 Hz and 230 vac, 50 Hz
- Power Consumption: 37-53 watts
- Wetted Parts:  
Housing: non-metallic Minlon  
Elastomers: EPDM, Viton® or Buna  
Piston/Spring: stainless steel

## FLOJET



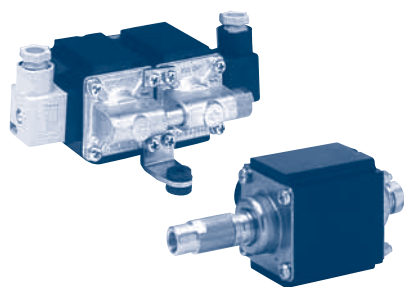
Low Flow, High Pressure



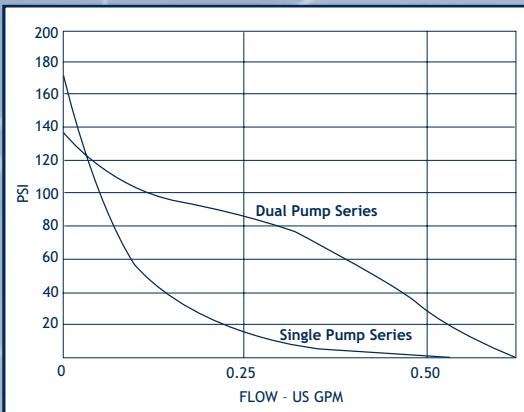
## UP TO .18 GPM, 230 PSI

- Temperatures to 160° F
- Self-priming to 1.3'
- Ports: 1/4" barb
- Voltages: 115 vac, 60 Hz and 230 vac, 50 Hz
- Power Consumption: 18.5 watts
- Wetted Parts:  
Housing: non-metallic Minlon  
Elastomers: EPDM, Viton® or Buna  
Piston/Spring: stainless steel

## FLUID-O-TECH



Medium Flow, High Pressure



## UP TO .6 GPM, 175 PSI

- Temperatures to 140° F
- Self-priming to 13'
- Ports: 1/8" FPT
- Voltages: 115 vac, 60 Hz and 230 vac, 50 Hz
- Power Consumption: 55 - 140 watts
- Wetted Parts:  
Housing: brass or plastic  
Elastomers: EPDM or glass  
Piston/Spring: stainless steel