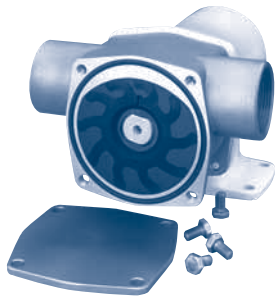


316SS AND EPOXY FLEXIBLE IMPELLER

JABSCO



Industrial FIP

SELF-PRIMING, GENTLE, SOLIDS HANDLING DESIGN

Jabasco's self-priming flexible impeller pump design can effectively handle thin, viscous, shear sensitive, abrasive, particle-laden, and air-entrained fluids with ease. Each pump is equipped with a mechanical seal (hardened seal optional) and a flexible impeller of Neoprene, Nitrile (Buna), EPDM or Viton®. Their versatile mounting options include close-coupled C-Face in 56C, 145TC, 182TC, and 184TC as well as pedestal mounting for base mount and pulley drive applications.

SSU	(Max rpm)	SSU	(Max rpm)	SSU	(Max rpm)	SSU	(Max rpm)
50	1750	700	1680	4,000	1400	15,000*	787
100	1750	800	1645	5,000	1312	20,000*	700
200	1750	900	1610	6,000	1225	30,000*	612
300	1750	1,000	1574	7,000	1138	40,000*	525
400	1750	1,500	1540	8,000	1050	50,000*	437
500	1750	2,000	1505	9,000	962	75,000*	298
600	1710	3,000	1450	10,000	875	100,000*	175

CONTENTS

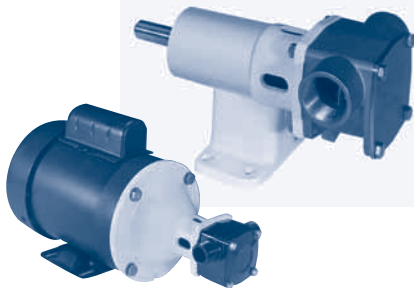
INDEX

NEXT

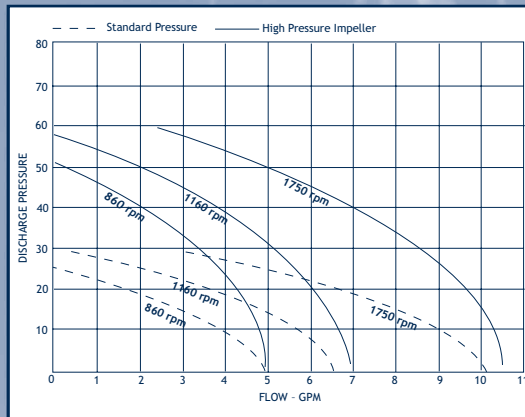
BACK

HOME

JABSCO (316SS)



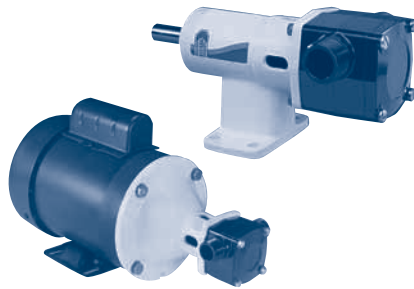
30510 Series (3/4")



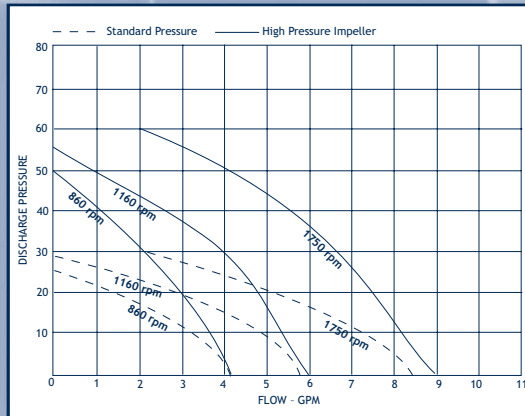
UP TO 10 GPM, 60 PSI

- Temperatures to 185° F
- Construction: 316SS
- Elastomer Options: Carbon/Ceramic or Tungston/Ceramic mechanical seal with Nitrile or Viton® rubber
- Impeller Options: Neoprene, Nitrile, Viton® and EPDM
- Mounting Options: AC and DC voltages, TEFC, washdown, explosion proof, gear reduction, variable speed drive and other custom configurations

JABSCO (EPOXY)



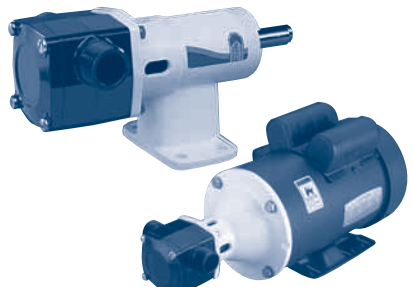
30510 Series (3/4")



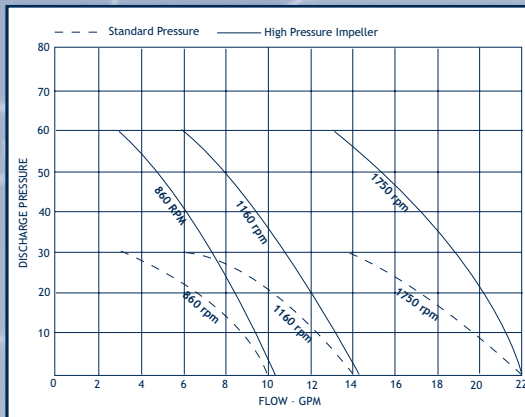
UP TO 8 GPM, 60 PSI

- Temperatures to 185° F
- Construction: Epoxy housing (no metal to liquid contact)
- Elastomer Options: Carbon/Ceramic or Tungston/Ceramic mechanical seal with Nitrile or Viton® rubber
- Impeller Options: Neoprene, Nitrile, Viton® and EPDM
- Mounting Options: AC and DC voltages, TEFC, washdown, explosion proof, gear reduction, variable speed drive and other custom configurations

JABSCO (EPOXY)



30520 Series (1")



UP TO 20 GPM, 60 PSI

- Temperatures to 185° F
- Construction: Epoxy housing (No metal to liquid contact)
- Elastomer Options: Carbon/Ceramic or Tungston/Ceramic mechanical seal with Nitrile or Viton® rubber
- Impeller Options: Neoprene, Nitrile, Viton® and EPDM
- Mounting Options: AC and DC voltages, TEFC, washdown, explosion proof, gear reduction, variable speed drive and other custom configurations