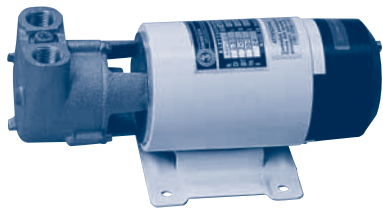


# SELF-PRIMING LIQUID RING PUMPS

- CONTENTS
- INDEX
- NEXT
- BACK
- HOME

## G & R by GIANNESCHI



ACB Series

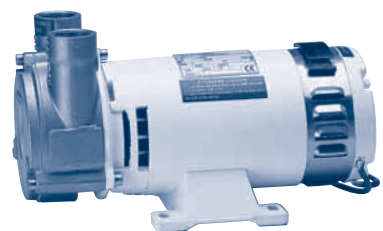
### BRONZE AC AND DC, UP TO 38 GPM, 131' TDH

Gianneschi's liquid ring ACB series is self-priming by design and delivers lower flows at higher heads than the CP series displayed below. This series is often applied for water pressure systems, reverse osmosis feed, washdown and fuel filtering.

Pump Series	Voltage	GPM at Feet of Head						Max Head
		0'	20'	40'	60'	80'	100'	
GIA ACB61E	DC	5.3	5.2	3.1	.60	-	-	62'
GIA ACB80E	*AC	7.9	7.3	6.8	5.8	4.5	2.5	115'
GIA ACB80E	DC	10.5	9.5	8.2	6.3	4.7	2.9	115'
GIA ACB90E	*AC	13.2	12.5	11.3	7.4	8.2	6.3	138'
GIA ACB90E	DC	13.2	13.1	11.3	9.8	8.2	5.3	106'
GIA ACB90E	DC	13.2	13.1	11.3	9.8	8.2	5.3	106'
GIA ACB331	AC	38.3	37.0	34.4	30.0	24.5	20.8	131'

\*Base on 50hz, 60hz models will deliver higher flow and head.

## G & R by GIANNESCHI



CP Series

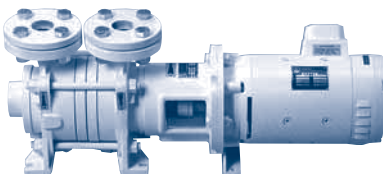
### BRONZE AC AND DC, UP TO 66 GPM, 42' TDH

Gianneschi's liquid ring CP series is self-priming by design and delivers higher flows at lower heads than the ACB series displayed above. This series is often applied for air conditioning condenser water, fuel transfer, and bilge. A unique feature of this series is that it is bi-rotational!

Pump Series	Voltage	GPM at Feet of Head					Max Head	
		5'	10'	15'	20'	30'		40'
GIA CP20	DC	6.6	6.1	5.8	5.5	4.0	-	39'
GIA CP25-1A	AC	19.0	18.0	15.0	12.0	5.0	-	35'
GIA CP25-1A	DC	19.8	18.5	15.8	13.2	6.6	-	39'
GIA CP32	*AC	20.0	16.1	13.0	10.0	-	-	24'
GIA CP32A	DC	26.4	26.4	26.0	23.2	17.1	11.8	46'
GIA CP40	*AC	47.5	42.8	38.3	32.0	21.1	11.0	42'
GIA CP40	DC	47.5	42.8	38.3	32.0	21.1	11.0	42'

\*Base on 50hz, 60hz models will deliver higher flow and head.

## G & R by GIANNESCHI



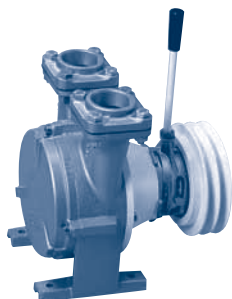
ACM Series

### BRONZE AC - DC, UP TO 308 GPM, 1115' TDH

Gianneschi's multi-stage liquid ring ACM series is self-priming by design and delivers higher flows and heads than either the ACB or CP series displayed above. This series is often applied for firefighting, boiler feed, and water systems in larger yachts. They are available in 24vdc, AC, 50hz or 60hz and shaft driven configurations.

Pump Series	Description	Flow Range	Max Head
GIA ACM-BT-DC	Close-Coupled to 24vdc motor	5- 66 GPM	125'
GIA ACM-BT-AC	Close-Coupled to 60hz AC motor	5- 185 GPM	540'
GIA ACM-BT-PED	Shaft Driven Pedestal Mount	5- 308 GPM	1115'

## G & R by GIANNESCHI



Clutch Drive FC & FS

### BRONZE CLUTCH DRIVEN, UP TO 158 GPM, 164' TDH

Gianneschi's clutch driven liquid ring FC and FS series are self-priming by design and deliver high flows and pressures. These series are often applied for firefighting, emergency bilge, washdown and fuel transfer. They are available in manual or electric clutch configurations. These series can be rotated in either direction and are also available with a bare shaft (clutchless) for direct or pulley drive installations.

Pump Series	Max RPM	Max Flow at Max RPM	Max Head at Max RPM	Flow at Max Head
GIA FS40/14 (F)	2500	158 GPM	156 Feet	63 GPM
GIA FS65 (F)	1500	132 GPM	164 Feet	21 GPM
GIA FC40/160 (F)	2000	79 GPM	98 Feet	26 GPM