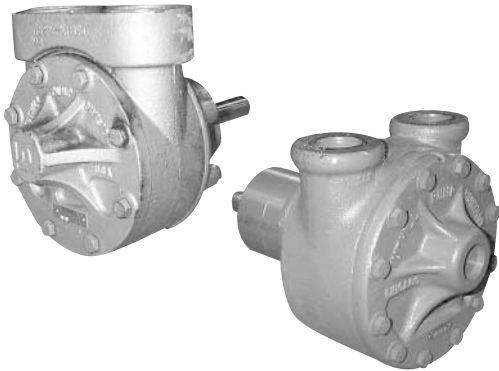


Tuthill manufactures an extensive line of cast iron, steel, and 316 stainless steel gear pumps (see page 20). Flows range from .3 to 550 gpm with pressure of up to 500 psi. All sizes are available in pedestal mount. Many sizes are available with C-face adapters, and others come with custom OEM adapter flanges. Each series are designed to meet a unique set of performance requirements. Feel free to call for assistance in selecting the right series for your application. Complete base mount and close-coupled assemblies are available.

TUTHILL



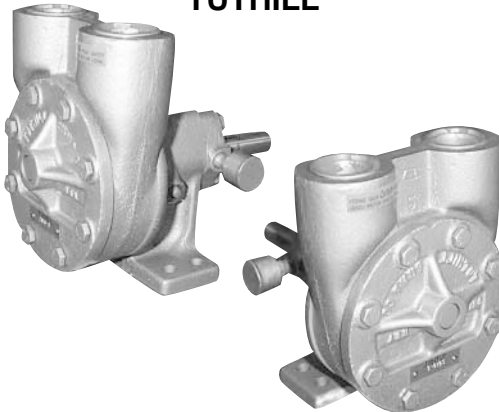
C1B and CK1B Series

UP TO 84 GPM, MECHANICAL SEAL, PEDESTAL OR FLANGE MOUNT

Model		Nominal Cap. GPM		Port Size	Max. PSI
Rotational	Reversing	1200 RPM	1800 RPM		
2C1B	2RC1B	6	9	1	150
3C1B	3RC1B	13	18	1 1/4	150
4C1B	4RC1B	25	36	1 1/2	150
5C1B	5RC1B	40	62	1 1/2	150
6C1B	6RC1B	56	84	2	150
2CK1B	2RCK1B	6	9	1/2	250
3CK1B	3RCK1B	13	18	3/4	250
4CK1B	4TCK1B	25	36	1	250
5CK1B	5RCK1B	40	62	1 1/4	250
6CK1B	6RCK1B	56	84	2	250

This series is provided with mechanical seal and may be base mounted or motor mounted. CK1B series has special double bearing construction. C-face (next page) and pedestal adapters are available.

TUTHILL



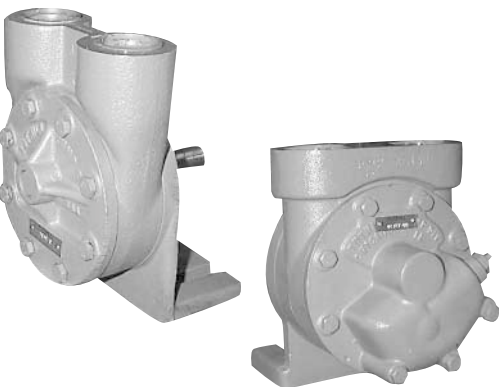
AC and C1G Series

UP TO 84 GPM, ADJUSTABLE OR SPRING LOADED PACKING, PEDESTAL MOUNT

Model		Nominal Cap. GPM		Port Size	Max. PSI
Bi-Rotational	Reversing	1200 RPM	1800 RPM		
1AC	1RAC	2	3	3/8	100
2AC	2RAC	6	9	1	100
3AC	3RAC	13	18	1 1/4	100
4AC	4RAC	25	36	1 1/2	100
5AC	5RAC	40	62	1 1/2	100
6AC	6RAC	56	84	2	100
1C1G	1RC1G	2	3	3/8	100
2C1G	2RC1G	6	9	1	100
3C1G	3RC1G	13	18	1 1/4	100
4C1G	4RC1G	25	36	1 1/2	100
5C1G	5RC1G	40	62	1 1/2	100
6C1G	6RC1G	56	84	2	100

AC Series has adjustable packing, C1G Series has spring loaded packing. Relief valve option is available. C1G Series is excellent for #6 fuel oil and is UL approved.

TUTHILL



C1E and C1EN Series

UP TO 84 GPM, SPRING LOADED LIP SEAL, PEDESTAL MOUNT

Model		Nominal Cap. GPM		Port Size	Max. PSI
Rotational	Reversing	1200 RPM	1800 RPM		
2C1E	2RC1E	6	9	1	100
3C1E	3RC1E	13	18	1 1/4	100
4C1E	4RX1E	25	36	1 1/2	100
5C1E	5RC1E	40	62	1 1/2	100
6C1E	6RC1E	56	84	2	100
2C1EN	2RC1EN	6	9	1	100
3C1EN	3RC1EN	13	18	1 1/4	100
4C1EN	4RC1EN	25	36	1 1/2	100
5C1EN	5RC1EN	40	62	1 1/2	100
6C1EN	6RC1EN	56	84	2	100

Both series come standard with a spring loaded lip seal. C1E Series is designed for direct drive while the C1EN is designed for V-belt drive. Relief valve option is available.

FOR ENGINEERING AND PUMP SELECTION ASSISTANCE CALL DEPCO AT 1-800-446-1656