

# SUBMERSIBLES

## 12 & 24 VDC SUBMERSIBLES FOR WELL TEST & DEWATERING

These unique DC powered submersibles handle widely different applications. The IM series is small enough to fit down a 2" diameter well. The in-line models can be used in series to obtain in excess of a 75 foot head. The WR SPA-1 1/2E is a super heavy-duty utility pump with 30 feet of cable, battery clips, on-off switch and 1 1/2" FPT discharge port.

Model Number	Volts DC	Amps	Max GPM	Max Head	Seal Material	Port Configuration
IM GP8815	12	2.3	2.6	27'	Neoprene	Screened Inlet, 1/2" or 3/8" OD Outlet
IM GP8825	24	1.2	2.6	27'	Neoprene	Screened Inlet, 1/2" or 3/8" OD Outlet
IM GP9955	12	2.3	2.6	27'	Neoprene	In-line Ports, 1/2" or 3/8" OD
IM GP9965	24	1.2	2.6	27'	Neoprene	In-line Ports, 1/2" or 3/8" OD
IM GP9216B	12	6.2	3.3	42'	Nitrile	Screened Inlet, 1/2" or 3/8" OD Outlet

Model Number	Volts DC	Amps	GPM at Feet of Head				Weight in lbs
			5	10	20	25	
WR SPA-1 1/2E	12	30	43	40	30	21	33

## 12 & 24 VDC SPECIALTY



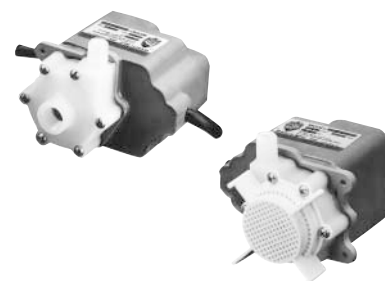
Well Test & Dewatering

## UP TO 6.5 GPM, 12.5 TDH "OIL FREE" EPOXY ENCAPSULATED

March epoxy encapsulated submersible pumps eliminates any possibility of oil contamination that is possible with the "oil filled" varieties. The models with a TE type motor (see below) may also be run in open air "non-submerged" applications. Maximum liquid temperature is 130° F and standard voltage is 115 vac (230 vac is available).

Model Number	GPM at Feet of Head				Max Head	Motor Type	Inlet Port	Outlet Port
	1'	3'	5'	10'				
MA 1C	1.9	.75			2.3'	TE/Sub	3/8" FPT	1/4" MPT
MA 1U	1.9	.75			2.3'	Sub	Screen	1/4" MPT
MA 1-1C	4.3	3.3	2.1		7'	TE/Sub	3/8" FPT	1/4" MPT
MA 1-1U	4.3	3.3	2.1		7'	Sub	Screen	1/4" MPT
MA 2C	6.4	5.8	5.0	2.6	12.5'	Sub	3/8" FPT	1/4" MPT
MA 2U	6.4	5.8	5.0	2.6	12.5'	Sub	Screen	1/4" MPT
MA LC-2C	6.4	5.8	5.0	2.6	12.5'	TE/Sub	3/8" FPT	1/4" MPT

## MARCH



Epoxy Encapsulated Series

## UP TO 500 GPH, 11 TDH "OIL FILLED" ECONOMY SUBMERSIBLE

Proven submersible pumps are used extensively in open air or submersible installations for pond, fountain, sump, air conditioning, tool coolant and many others. They have an epoxy coated aluminum motor housing, plastic pump housing, stainless shaft and removable suction strainer. Standard voltage is 115 vac.

Model Number	GPH at Feet of Head			Max. Head	Inlet Port	Outlet Port	Dimensions (H x W x L)
	1'	3'	5'				
PR B180	180	140	100	8'	1/2" MPT	1/4" MPT	5" x 5" x 4 1/2"
PR B240	240	180	140	10'	1/2" MPT	1/4" MPT	5" x 5" x 4 1/2"
PR B300	300	250	190	11'	3/4" MPT	1/4" MPT	5" x 5" x 4 1/2"
PR B500	500	360	300	11'	3/4" MPT	3/8" MPT	5" x 5" x 4 1/2"

## PROVEN



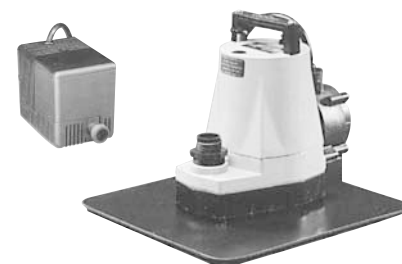
Submersible Series

## AUTOMATIC SUBMERSIBLES FOR SUMPLESS AREAS

Little Giant manufactures two very versatile submersibles for automatically removing water from areas without a sump (roof, patio, plant floor, etc.). Both pumps switch on at approximately 2 3/8" and shut off at 1 1/2" of water. See the bottom of page 124 for a manually operated pump to remove water down to 1/8"! Both models are 115 vac and come with a 25' electric cord.

Model Number	Volts DC	GPH at Feet of Head				Max Head	Outlet Port
		1	3	5	10		
LG 500-APCP	115	470	356	252	-	9.2	3/4" GHT
LG 5-APCP	115	1200	1170	1100	1000	26.3	1" FPT or 3/4" GHT

## LITTLE GIANT



Automatic On/Off Series