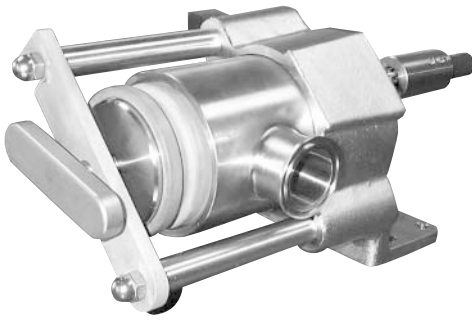


HYPRO

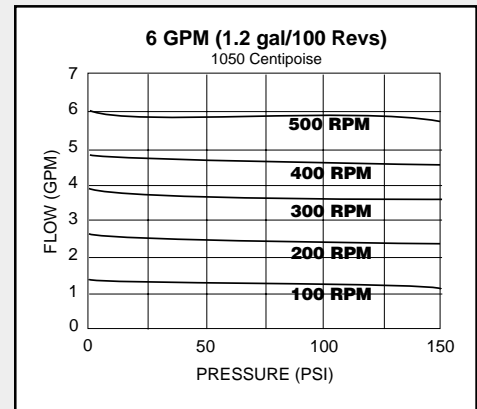
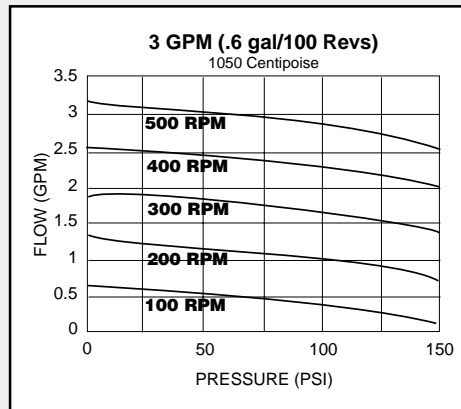
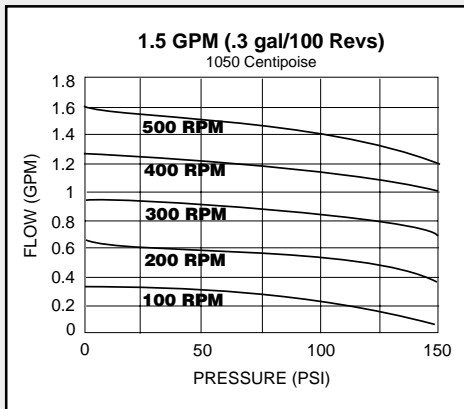


Clean Gear Series

UP TO 6 GPM, 150 PSI, 3A & USDA

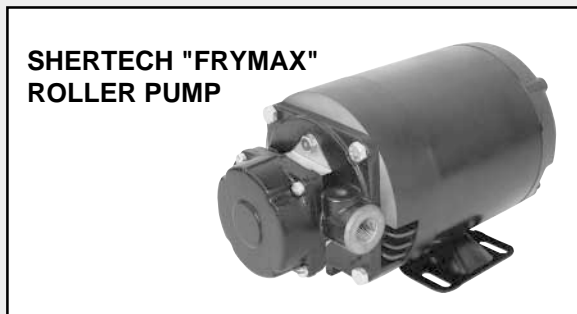
The "Clean Gear" series is a 316L stainless steel low speed positive displacement rotary gear pump with only two moving parts, making it simple and durable. The tool-less design allows for easy pump installation, removal and cleaning teardown. It will handle low to high viscosity, non-particulated liquids.

- Up to 100,000 CPS
- -20° F to 250° F
- 1.5" tri-clamp ports
- 316L SS body, with Teflon bearing liners



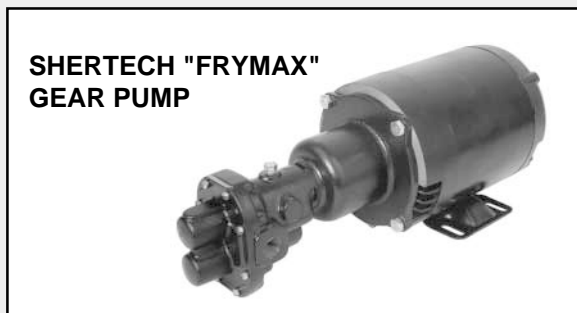
NSF HOT OIL "FRYER" PUMPS

Shertech non-clogging hot oil pumps are for permanent or portable, continuous duty filtration operation. They are also ideally suited for reclaiming waste cooking oils and for use in oil management systems.



The Shertech "Frymax" compact roller pumps are for operation where space is at a premium. It will replace most existing pumps with little or no plumbing modifications with a size envelope of only 6 3/4" high, 5 3/4" wide, 11 37/64" long.

SERIES	PORT SIZE	MAX GPM	MAX PSI
NR3	1/2" IPT	3.75	50
NR5	1/2" IPT	5.5	50
NR8	3/4" IPT	8.0	50
NR10	3/4" IPT	10.5	50



The Shertech "Frymax" gear pumps are for heavy-duty operation where ruggedness is essential. There is also an optional relief valve available to by-pass flow when the pump discharge is blocked or obstructed.

SERIES	PORT SIZE	MAX GPM	MAX PSI
NG3	1/2" IPT	3.1	50
NG5	1/2" IPT	5.6	50
NG7	1/2" IPT	7.0	50
NG11	3/4" IPT	10.1	50

FOR ENGINEERING AND PUMP SELECTION ASSISTANCE CALL DEPCO AT 1-800-446-1656