

# GROCO OIL CHANGE / DIESEL TRANSFER

CONTENTS

ENGINE COOLING

INDEX

HOME

NEXT

BACK

GROCO



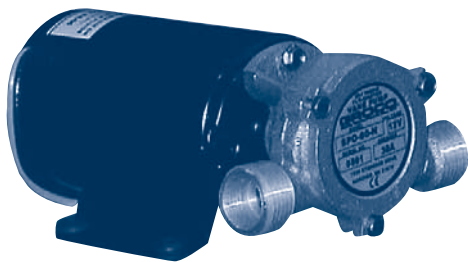
Reversible Vane Design

## REVERSIBLE VANE FOR OIL CHANGE/DIESEL TRANSFER

These pumps come in two sizes and two DC voltages. You can construct your own oil change manifold system by matching your choice of pump with a manifold shown at the bottom of page 42. Both pump ports are threaded 3/4" male GHT and 1/2" female NPT. See page 165 for service parts. Now available with optional remote reversing feature that enables the user to control pump operation from a remote location. This option includes control circuit and switch panel. Add an additional R to part number for remote reversing option (ex. GC SPO-60RR12V).

| Model Number   | Volts DC | Free Flow Diesel GPM/Amps | Free Flow Oil GPM/Amps |
|----------------|----------|---------------------------|------------------------|
| GC SPO-60R 12V | 12vdc    | 7 / 6.5                   | 4.5 / 17               |
| GC SPO-60R 24V | 24vdc    | 7 / 4                     | 4.5 / 11               |
| GC SPO-80R 12V | 12vdc    | 7.5 / 12                  | 5 / 22                 |
| GC SPO-80R 24V | 24vdc    | 7.5 / 7                   | 5 / 13                 |

GROCO



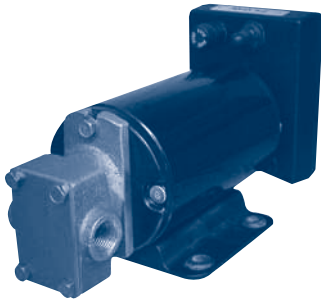
Continuous Duty Vane Design

## VANE PUMPS FOR OIL CHANGE / DIESEL TRANSFER

These versatile pumps come in two sizes and three DC voltages. They are used worldwide for oil change and diesel transfer and will operate with or without a manifold. Both pump ports are threaded 3/4" male GHT and 1/2" female NPT. See page 165 for service parts.

| Model Number  | Volts DC | Free Flow Diesel GPM/Amps | Free Flow Oil GPM/Amps |
|---------------|----------|---------------------------|------------------------|
| GC SPO-60 12V | 12 vdc   | 7 / 6.5                   | 4.5 / 17               |
| GC SPO-60 24V | 24 vdc   | 7 / 4                     | 4.5 / 11               |
| GC SPO-80 12V | 12 vdc   | 7.5 / 12                  | 5 / 22                 |
| GC SPO-80 24V | 24 vdc   | 7.5 / 7                   | 5 / 13                 |

GROCO



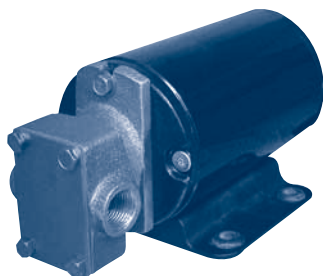
Reversible Gear Design

## REVERSIBLE GEAR FOR OIL CHANGE/DIESEL TRANSFER

Groco's new GPB-R series reversible bronze gear pump was designed specifically for the rigors of viscous oil change and long duty diesel transfer. They are self-priming and come equipped with an "Ignition Protected" motor that has a 316 stainless steel shaft. The integral reversing toggle switch allows instant flow reversing to facilitate oil changing or diesel fuel tank ballast adjustment. Now available with optional remote reversing feature (GPBRR Series) that enables the user to control pump operation from a remote location. This option includes control circuit and switch panel.

| Model Number   | Volts  | Max GPM | Fuse Size | Inlet/Outlet Ports | Dimensions (H x W x L) |
|----------------|--------|---------|-----------|--------------------|------------------------|
| GC GPBR-1-12V  | 12 vdc | 3.5     | 20 amps   | 3/8" FPT           | 4.46" x 4.04" x 8.62"  |
| GC GPBRR-1-12V | 12 vdc | 3.5     | 20 amps   | 3/8" FPT           | 4.46" x 4.04" x 8.62"  |
| GC GPBR-1-24V  | 24 vdc | 3.5     | 10 amps   | 3/8" FPT           | 4.46" x 4.04" x 8.62"  |
| GC GPBRR-1-24V | 24 vdc | 3.5     | 10 amps   | 3/8" FPT           | 4.46" x 4.04" x 8.62"  |

GROCO



Gear Design

## GEAR PUMP FOR OIL CHANGE/DIESEL TRANSFER

Groco's new GPB series bronze gear pump was designed specifically for the rigors of viscous oil change and long duty diesel transfer. They are self-priming and come equipped with an "Ignition Protected" motor that has a 316 stainless steel shaft.

| Model Number | Volts  | Max GPM | Fuse Size | Inlet/Outlet Ports | Dimensions (H x W x L) |
|--------------|--------|---------|-----------|--------------------|------------------------|
| GC GPB-1-12V | 12 vdc | 3.5     | 20 amps   | 3/8" FPT           | 3.43" x 4.04" x 6.72"  |
| GC GPB-1-24V | 24 vdc | 3.5     | 10 amps   | 3/8" FPT           | 3.43" x 4.04" x 6.72"  |