

# JOHNSON AND SHERWOOD PUMPS

CONTENTS

ENGINE COOLING

INDEX

HOME

NEXT

BACK

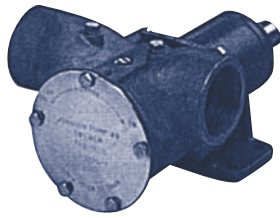
## F8B-8007 (62 gpm at 1800 rpm)



10-13021-91 (7/8" Shaft, 1 1/4" Ports)  
10-13021-9 (24mm Shaft, 1 1/2" Ports)

Part No.	Description	Qty.
819B	Impeller (neoprene)	1
01-35720	Shaft (7/8")	1
01-35132	Shaft (24mm)	1
01-42422-1	Cover	1
01-42424	Gasket	1
01-42680	Cam Full Thickness	1
01-45374	Bearing Spacer	1
05-04-178	Screw (cover)	5
05-04-108	Cam Screw (full)	1
09-20-505	Mechanical Seal	1
05-08-504	Ball Bearing	2
05-34-108	Snap Ring	2
01-42423	Wearplate	1

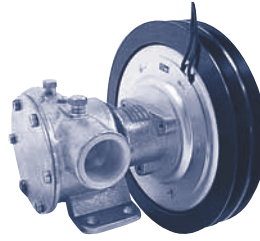
## F9B-3007 2" Ports (83 gpm at 1800 rpm)



10-13026-10

Part No.	Description	Qty.
814B	Impeller (Neoprene)	1
01-35137	Shaft (24mm)	1
01-42422-1	Cover	1
01-42424	Gasket	1
01-43137	Cam Full Thickness	1
01-43135	Cam 2/3 Thickness	1
05-04-46	Screw (Cover)	5
05-04-108	Cam Screw (Full)	1
05-04-108	Cam Screw (2/3)	1
05-04-147	Cam screw (1/2)	1
05-19-505	O-Ring	1
09-20-118	Mechanical Seal	1
05-08-504	Ball Bearing	2
05-34-108	Snap Ring (Small)	2
01-42423	Wearplate	1
05-34-118	Snap Ring (Large)	1
05-29-118	Bearing Seal	1

## F7B-50017 1" Ports with Electric Clutch



10-24071-17 (12V)

Part No.	Description	Qty.
1028B	Impeller (Neoprene)	1
1028B-9	Impeller (Nitrile)	1
01-45076	Shaft	1
01-42441	Cover	1
01-42445	Gasket	1
01-42679	Cam Full Thickness	1
01-42442	Cam 2/3 Thickness	1
01-45046	Spacer Inner	1
01-42679	Screw (Cover)	6
05-04-174	Screw (Cover)	1
05-04-107	Cam Screw (Full)	1
05-04-144	Cam Screw (2/3)	1
05-29-105	Lip Seal	1
05-06-501	O-Ring	1
05-08-128	Ball Bearing	2
05-34-130	Snap Ring (LG)	1
05-34-21	Snap Ring (SM)	1
05-32-1	Complete Clutch 12V	1
05-32-7	Coil Only 12V	1

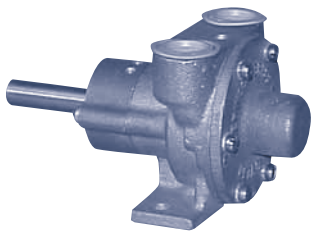
## F8B-50017 1 1/2" Ports with Electric Clutch



10-13022-33 (12V)

Part No.	Description	Qty.
819B	Impeller (Neoprene)	1
01-35136	Shaft (24mm)	1
01-42422-1	Cover	1
01-42424	Gasket	1
01-42680	Cam Full Thickness	1
01-42425	Cam 2/3 Thickness	1
01-45374	Bearing Spacer	1
05-04-178	Screw (Cover)	5
05-04-108	Cam Screw (Full)	1
05-04-108	Cam Screw (2/3)	1
05-29-508	Lip Seal	1
09-20-505	Mechanical Seal	1
05-08-504	Ball Bearing	2
05-34-118	Snap Ring (Large)	1
01-42423	Wearplate	1
05-32-1	Complete Clutch 12V	1
05-32-7	Coil Only 12V	1
05-34-108	Snap Ring (Small)	2

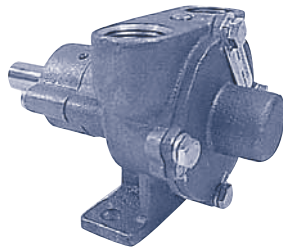
## SHERWOOD



R-20-G / R-30-G

Part No.	Description	Qty.
10077	Impeller	1
10286	Gasket, Cover	1
11367	Seal	1
10281	*Cover Assembly	1
10289	Shaft	1
4306	Ball Bearing	1
10198	*Ball Bearing Housing Ass'y	1
10285	Cam	1
10093	Key	1
4303	Int. Ret. Ring	1
4304	Ext. Ret. Ring	3
1311	Dowel Pin	2
2075G	Bushing	1
10197	Gasket, Housing	1
336	Pipe Plug	1

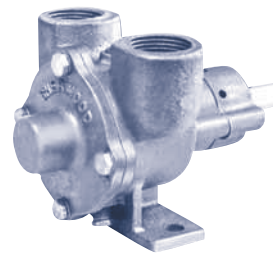
## SHERWOOD



R-40-G / R-50-G

Part No.	Description	Qty.
9959	Impeller	1
10103	Gasket, Cover	1
10927	Seal	1
10096	*Cover Assembly	1
10175	Shaft	1
4257	Ball Bearing	1
10172	*Ball Bearing Housing Ass'y	1
10162	Cam (R40G)	1
10072	Cam (R50G)	1
10186	Cam (R60G)	1
4432	Key	1
4259	Int. Ret. Ring	1
4258	Ext. Ret. Ring	3
1311	Dowel Pin	2
06333	Bushing	1
10171	Gasket, Housing	1
336	Pipe Plug	1

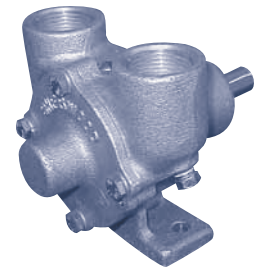
## SHERWOOD



R-60-G / R-70-G / R-80-G

Part No.	Description	Qty.
10187	Impeller	1
10185	Gasket, Cover	1
10927	Seal	1
10183	*Cover Assembly	1
10184	Shaft	1
4257	Ball Bearing	1
10172	*Ball Bearing Housing Ass'y	1
10186	Cam (R60G)	1
10813	Cam (R70G)	1
10295	Cam (R80G)	1
4432	Key	1
4259	Int. Ret. Ring	1
4258	Ext. Ret. Ring	3
1311	Dowel Pin	2
06333	Bushing	1
10171	Gasket, Housing	1
336	Pipe Plug	1

## SHERWOOD



R-102

Part No.	Description	Qty.
10615	Impeller	1
10931	Gasket, Cover	1
10927	Seal	1
10183	*Cover Assembly	1
18502	Shaft	1
4257	Ball Bearing	1
10929	Cam	1
4432	Key	1
4259	Int. Ret. Ring	1
4258	Ext. Ret. Ring	3
1311	Dowel Pin	2
06333	Bushing	1
336	Pipe Plug	1

\*ASSEMBLY DESCRIPTION: Cover Assembly includes cover and bushing. Ball Bearing Housing Assembly includes ball bearing housing and floating seat.