

CONTENTS

ENGINE COOLING

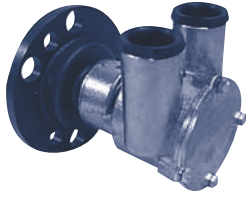
INDEX

HOME

NEXT

BACK

JOHNSON Crankshaft Mount



10-24232-1 (F6B-9)

Indmar

Part No.	Description	Qty
812B	Impeller	1
01-45670	Cam (10-24232-1)	1
05-04-174	Screw for Above	1
01-45687	Cam (10-24232-2)	1
05-04-175	Screw for Above	1
01-45312-1	Cover	1
01-45315	Gasket	1
05-29-515	Lip Seal	1
01-45680	Seal Washer	1
05-04-550	Cover Screw	4
05-06-501	O-Ring	1
05-08-128	Ball Bearing	2

SHERWOOD 4 and 6 Cylinder Diesel

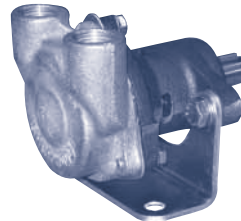


K-90

Isuzu # X-26230-1023

Part No.	Description	Qty
10615K	Impeller	1
12859	Mech Seal	1
4264	Seal Spacer	1
12231	Cover O-Ring	1
12855	Gasket	1
12856	Wearplate	1
10944	Cam	1
10515	Cam Screw	1
4432	Key	1
12211	Ball Bearing	2
5133	Bearing Spacer	1
4258	Snap Ring (SM)	3
4259	Snap Ring (LG)	2
12857	Cover Bolts	3
12710	Lock Washers	3
12596	Shaft	1

SHERWOOD Kilopac

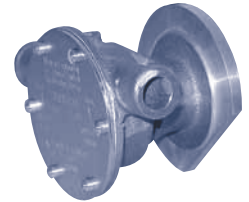


G-11

Kilopac

Part #	Description	Qty
9000K	Impeller	1
21578	Shaft	1
18576	Key (Drive)	1
4258	Snap Ring (SM)	3
4259	Snap Ring (LG)	2
12859	Mechanical Seal	1
12710	Lock Washer	3
12857	Cover Screw	3
12856	Wearplate	1
10195	Cam Screw	1
18663	Cam	1
4264	Seal Washer	1
12231	O-Ring	1
12855	Gasket	1
5133	Spacer	1
12211	Ball Bearing	2
4432	Key (Impeller)	1

JABSCO Kubota

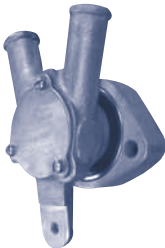


29460-1301

(Replaced by 29460-1701)
Kubota

Part No.	Description	Qty
18653-0001	Impeller	1
2995-0000	Gasket	1
SP2701-1006	Water Seal	1
91002-0010	Cover Screw	6
2907-0000	Cam	1
91002-0020	Cam Screw	1
SP2701-1006	Oil Seal	1
SP2601-0457	Bearing	2
29467-0000	Shaft (1301)	1
29467-0020	Shaft (1701)	1
11830-0000	End Cover	1

JABSCO Lancing Marine



22960

Part No.	Description	Qty
4528-0001	Impeller	1
91002-0090	Cover Screw	3
91002-0020	Cam Screw	1
92701-0140	Seal	1
22967-0000	Shaft	1

SHERWOOD Marine Power

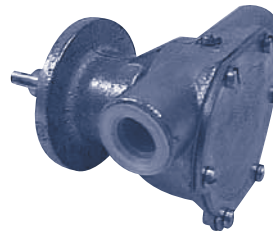


G-157

Marine Power

Part No.	Description	Qty
15000K	Impeller	1
12859	Mechanical Seal	1
4264	Seal Spacer	1
12231	Cover O-Ring	1
12855	Gasket	1
12856	Wearplate	1
18314	Cam	1
10515	Cam Screw	1
4432	Key	1
12211	Ball Bearing	2
5133	Bearing Spacer	1
4258	Snap Ring (SM)	3
4259	Snap Ring (LG)	2
12857	Cover Bolts	3
12710	Lock Washers	3
21231	Shaft	1

JOHNSON Nanni P30



10-35127

Nanni

Part No.	Description	Qty
810B	Impeller	1
05-29-139	Lip Seal	2
01-45955	Seal Spacer	1
01-45284	Gasket	1
01-45282	End Cover	1
05-04-642	Cover Screw	6
05-08-130	Ball Bearing	2
05-34-501	Snap Ring	1
05-06-513	Slinger	1
01-42389	Cam	1
05-04-114	Cam Screw	1
01-45353	Shaft	1
05-06-523	Mounting O-Ring	1
01-43238	Mounting Clamp	2

SHERWOOD OMC - P30 V8 Chevy



G-46 (Old #G45-2)

OMC # 985096 (981939)

Part No.	Description	Qty
10615K	Impeller	1
12859	Mech Seal	1
4264	Seal Spacer	1
12231	Cover O-Ring	1
12855	Gasket	1
12856	Wearplate	1
10929	Cam	1
10515C	Cam Screw	1
4432	Key	1
12211	Ball Bearing	2
5133	Bearing Spacer	1
4258	Snap Ring (SM)	3
4259	Snap Ring (LG)	2
12857	Cover Bolts	3
12710	Lock Washers	3
13363	Shaft	1
15048	Pulley	1