

ENGINE COOLING PUMPS

- CONTENTS
- ENGINE COOLING
- INDEX
- HOME
- NEXT
- BACK

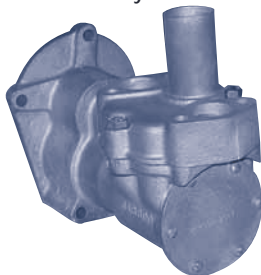
JABSCO Aifo Iveco



29600-1001

Part No.	Description	Qty
17937-0001	Impeller	1
890-0000	Gasket	1
SP6080-0469	Water Seal	1
934-0000	Cam	1
91003-0110	Cover Screw	6
91004-0090	Cam Screw	1
SP2700-1027	Oil Seal	1
SP2600-0500	Bearing	2
29607-0000	Shaft	1
4156-0000	Wearplate	1
11831-0000	Cover	1

JABSCO Chrysler



6990

Imperial "V"
V-275 Engines

Part No.	Description	Qty
8444-0001	Impeller	2
91002-0020	End Cover Screw	6
11830-0000	End Cover	1
3298-0000	Gasket	1
91003-0010	Cam Screw	2
92700-0060	Seal	1
9200-0210	O-Ring	1
6997-0000	Shaft	1
3298-0000	Slinger	1
913-0000	Bearing Seal	1
92600-0060	Ball Bearing	1
8566-0000	Cam & Wearplate	2

SHERWOOD Commander

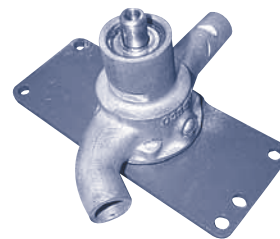


J-70 (1" Ports) / L80 (1 1/4" Ports)

Ford 302 and 351C.I.
J70 (CMI-10-610) L 80 (C2-10-610)

Part No.	Description	Qty
9959K	Impeller (J-70)	1
10615K	Impeller (L-80)	1
13274	Shaft	1
12622	Key (Drive)	1
4258	Ret. Ring - Ext.	3
4259	Ret. Ring - Int.	2
12211	Ball Bearing	2
5133	Spacer	1
12857	Screw (Cover)	3
12710	Lock Washer	3
12856	End Plate	1
10515C	Screw (Cam)	1
4432	Key (Impeller)	1
12231	O-Ring	1
12855	Gasket	1
4264	Seal Washer	1
12859	Seal Assy	1
15883	Cam (J70)	1
10944	Cam (L80)	1

JABSCO Correct Craft

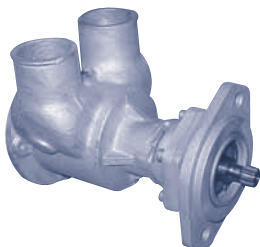


11850-0801

302 Ford Block

Part No.	Description	Qty
1210-0001	Impeller	1
12064-0000	End Cover	1
8614-0000	Gasket	1
91030-0100	Plug Screw	1
91030-0110	Cam Screw	1
8528-0000	Cam	1
8493-0000	Wearplate	1
96080-0080	Mechanical Seal	1
12019-0000	Washer	1
93000-0090	Bearing Seal	1
92600-0070	Bearing	1
18714-0000	Snap Ring	1
91401-0030	Key	1
11977-0000	Shaft	1

JABSCO Daytona Marine

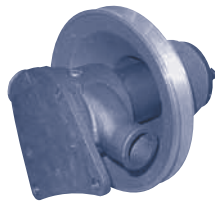


30892-0001

DME4 / DME6

Part No.	Description	Qty
30919-0001	Impeller	1
30929-1000	Cam	1
30914-1000	End Cover	1
30915-1000	Wearplate	1
30903-0000	Shaft	1
18753-0318	Ball Bearing	2
18753-0342	Mechanical Seal	1
18753-0469	Bearing Seal	1
18753-0343	Cover O-Ring	1
92000-0560	Slinger O-Ring	1
92000-6020	Cam Screw O-Ring	1
18753-0345	Snap Ring (SM)	1
18753-0344	Snap Ring (LG)	3
18753-0346	Screw Kit (Cover & Cam)	1

OBERDORFER Daytona Marine & John Deere



402M-3

Chevy 327 and 427 C.I.

Part No.	Description	Qty
6603	Impeller	1
6659	Cover	1
6637	Shaft	1
6606	Cam	1
32230	Water Seal	1
6609	Bearing Seal	2
5928	Ball Bearings	2
5925	Snap Ring Bearing	1
5926	Snap Ring Shaft	2
6631	Washer for Seal	1
5475	Impeller Key	1
6684	O-Ring (Cover)	1
6775	Screw	6
7300-62	Cam Screw	1
5016	Washer (Pulley)	3
6958	Screw (Pulley)	3
6661	Pulley	1
6567	Pulley Key	1
6931	Pulley Bushing	1
6685	Cam Pin	1
6635	Wearplate	1

JOHNSON Engel, Max



10-35187-3

K 34A / K 34M

Part No.	Description	Qty
808B	Impeller	1
05-29-139	Lip Seal	2
01-43240	Gasket	1
01-43239	End Cover	1
05-04-642	Cover Screw	4
01-45087	Wearplate	1
01-42400	Wearplate Pin	1
05-08-130	Ball Bearing	2
05-34-131	Snap Ring (LG)	1
05-34-501	Snap Ring (SM)	1
01-42910	Cam	1
05-04-114	Cam Screw	1
05-01-120	Screw Washer	1
01-45669	Shaft	1
05-06-521	Mounting O-Ring	1
01-43238	Mounting Clamp	2

SHERWOOD Escort



G85

Escort

Part No.	Description	Qty
10615K	Impeller	1
12231	O-Ring Gasket	1
10515	Cam Screw	1
10944	Cam	1
4432	Key	1
4258	Snap Ring (SM)	3
4259	Snap Ring (LG)	2
12859	Mechanical Seal	1
4264	Seal Washer	1
12856	Wearplate	1
12837	Cover Screw	3
12710	Lock Washer	3
12596	Shaft	1
12211	Ball Bearing	2
5133	Bearing Spacer	1
9420	Pin	1
10769	Sheave Bracket	1
12855	Gasket	1