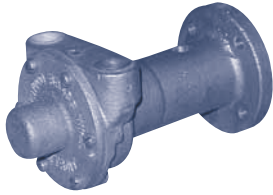


- CONTENTS
- ENGINE COOLING
- INDEX
- HOME
- NEXT
- BACK

SHERWOOD Model B and K



M10261G (B) / M10262G (K)

Chris-Craft # 16.80-10007 (M10262G)

Part No.	Description	Qty
10077K	Impeller (10261G)	1
10314	Impeller (10262G)	1
10286	Gasket	1
10546	Mechanical Seal	1
4306	Ball Bearing	1
10284	Shaft (10261G)	1
10312	Shaft (10262G)	1
10285	Cam (10261G)	1
10313	Cam (10262G)	1
10195	Cam Screw	1
2075G	Bushing	1
12686	Cover Screw	6
10279	End Cover	1
10093	Key (10261G)	1
17658	Key (10262G)	1
17657	Coupling Pin	1
1311	Dowel Pin	2
7070	Slinger	1
17656	Coupling	1
4304	Snap Ring	1

SHERWOOD Model M and W

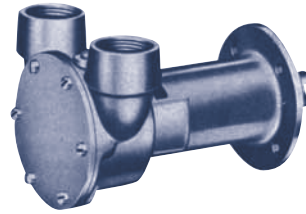


M10263G (M) / M10264G (W)

Chris-Craft # 16.80-10008 (M10263G)
Chris-Craft # 16.80-10009 (M10264G)

Part No.	Description	Qty
9959K	Impeller	1
10103	Gasket	1
10545	Mechanical Seal	1
4306	Bearing (10263G)	1
4257	Bearing (10264G)	1
10272	Shaft (10263G)	1
10276	Shaft (10264G)	1
10072	Cam	1
9919	Cam Screw	1
06333	Bushing	1
1482	Cover Screw	4
12710	Lock Washer	4
10096	End Cover	1
4432	Key	1
17657	Cplg Pin (10263G)	1
528	Cplg Pin (10264G)	1
1311	Dowel Pin	2
17656	Coupling (10263G)	1
529	Coupling (10264G)	1
4258	Snap Ring	1
7070	Slinger	1

JABSCO K Series 95-120HP



3380-0001

Part No.	Description	Qty
1210-0001	Impeller	1
91002-0020	Screw	6
11830-0000	End Cover	1
5212-0000	Gasket	1
5211-0000	Cam & Wearplate	1
92700-0060	Seal	1
92000-0210	O-Ring	1
91003-0090	Screw	1
3376-0000	Adaptor	1
3286-0000	Slinger	1
5857-0000	Shaft	1
92700-0060	Bearing Seal	1
92600-0130	Bearing	2
3383-0000	Brg. Spacer	1
3278-0000	Coupling	1

JABSCO M Series 131-158HP



5850-0001

Part No.	Description	Qty
1210-0001	Impeller	1
91002-0020	Screw	6
11830-0000	End Cover	1
3298-0000	Gasket	1
92700-0060	Seal	1
92000-0210	O-Ring	1
91003-0010	Screw (Cam)	1
7884-0000	Cam & Wearplate	1
3166-0000	Seal Spacer	1
3376-0000	Adaptor	1
3286-0000	Slinger	1
5857-0000	Shaft	1
92700-0060	Bearing Seal	1
92600-0130	Ball Bearing	2
3383-0000	Brg. Spacer	1
3278-0000	Coupling	1
7883-0000	Wearplate only	1

SHERWOOD Model 350

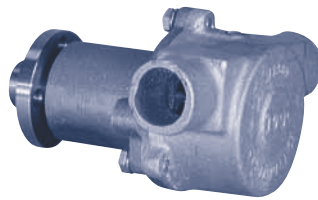


G-15

Chris-Craft # 16.80-18346

Part No.	Description	Qty
9959K	Impeller	1
12859	Seal	1
12211	Bearing	2
12233	Shaft	1
15883	Cam	1
12231	O-Ring	1
12855	Gasket	1
10515C	Cam Screw	1
12856	Wearplate	1
4432	Impeller Key	1
12622	Pulley Key	1
12305	Retaining Pulley Key	1
4258	Retaining Ring (SM)	2
4259	Retaining Ring (LG)	2
12323	Pulley	1

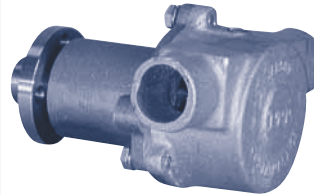
JABSCO 350 C.I.



18830-0000 (1" Ports)

Part No.	Description	Qty
1210-0001	Impeller	1
18836-1000	Shaft	1
490-0001	Cam	1
18753-0005	O-Ring	1
96080-0080	Seal	1
92600-0120	Ball Bearing	2
See Hardware Kit	Retaining Ring	1
See Hardware Kit	Roll Pin	1
91003-0010	Cam Screw	1
See Hardware Kit	Key	1
18835-1000	Pulley Adaptor	1
18753-0010	Hardware Kit	1
18753-0001	Screw Kit	1

JABSCO 454 C.I.



18930-0000 (1 1/4" Ports)

Part No.	Description	Qty
11979-0001	Impeller	1
18836-1000	Shaft	1
10182-0000	Cam	1
18753-0005	O-ring	1
96080-0080	Seal	1
92600-0120	Ball Bearing	2
See Hardware Kit	Retaining Ring	1
See Hardware Kit	Roll Pin	1
91004-0090	Cam Screw	1
See Hardware Kit	Key	1
18835-1000	Pulley Adaptor	1
18753-0010	Hardware Kit	1
18753-0001	Screw Kit	1

JABSCO Model A and B



4740

Part No.	Description	Qty
18673-0001	Impeller	1
91002-0020	Cover Screw	6
11830-0000	Cover	1
2995-0000	Gasket	1
2907-0000	Cam	1
91002-0090	Cam Screw	1
92700-0050	Seal	1
92000-0430	Large O-Ring	1
92000-0230	Small O-Ring	2
1881-0000	Shaft	1

Chris Craft Impeller Cross-Reference

Chris Craft #	Depco Part No.
16.80-90131	SH 10615K
16.80-90047	(2) SH 10077K
16.80-90166	SH 9959K
16.80-90049	SH 9959K
16.80-90046	SH 9924 (Blades)