

CONTENTS

ENGINE COOLING

INDEX

HOME

NEXT

BACK

## SHERWOOD



**G-151**

Mercuriser 7.3 Diesel  
Star Power Inboard

Part No.	Description	Qty
15000K	Impeller	1
12859	Mechanical Seal	1
4264	Seal Washer	1
12231	O-Ring	1
12855	Gasket	1
12856	Wearplate	1
4258	Snap Ring (SM)	3
4259	Snap Ring (LG)	2
12211	Ball Bearing	2
5133	Bearing Spacer	1
4432	Impeller Key	1
19570	Shaft	1
18314	Cam	1
10515C	Cam Screw	1
15055	Pulley	1
12857	Cover Bolt	3
12710	Washer	3

## SHERWOOD



**G-155**

Mercuriser 7.3 Diesel  
Star Power Stern Drive

Part No.	Description	Qty
15000K	Impeller	1
12859	Mechanical Seal	1
4264	Seal Washer	1
12231	O-Ring	1
12855	Gasket	1
12856	Wearplate	1
4258	Snap Ring (SM)	3
4259	Snap Ring (LG)	2
12211	Ball Bearing	2
5133	Bearing Spacer	1
4432	Impeller Key	1
19570	Shaft	1
18314	Cam	1
10515C	Cam Screw	1
15055	Pulley	1
12857	Cover Bolt	3
12710	Washer	3

## GENERAC (Mercuriser Generator)

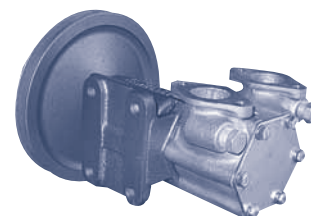


**Mercuriser 46-810800**

Part No.	Description	Qty
MC 47-810567	Impeller	1
MC 27-810569	Gasket	1
MC 26-810574	Oil seal	1
MC 30-810579	Bearing (Pulley side)	1
MC 30-810580	Bearing (Impeller side)	1
MC 810578	Cam	1
MC 25-810575	O-Ring	1
MC Generac	Shaft	1

Complete pump is discontinued. Retrofit pump is available. Call for information.

## MERCURISER / HINO KASHIYAMA



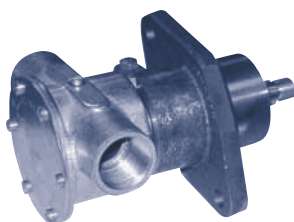
**1690-1659R**

Only Impeller Available

Depco Part No.	Depco Part No.
JA 31130-0061	16131-1350
16131-1350	Mercuriser Part No. 47-831311350

See page 163, Silhouette CC for impeller dimensions.

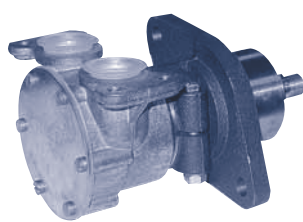
## JOHNSON (Hino W04CT / W04D)



**10-24253**

Part No.	Description	Qty
1028B	Impeller	1
01-42445	Gasket	1
09-20-115	Mechanical Seal	1
01-45174	Seal Washer	1
05-34-105	Seal Snap Ring	1
01-42679	Cam	1
05-04-107	Cam Screw	1
01-42441	Cover	1
05-04-117	Cover Screws	6
01-42443	Wearplate	1
01-42400	Wearplate Pin	1
01-42402	Slinger	1
05-08-21	Ball Bearings	2
01-42537	Bearing Spacer	1
05-29-519	Bearing Seal	1
05-34-21	Snap Ring (SM)	1
05-34-117	Snap Ring (LG)	1
05-04-105	Clamp Screw	1
05-01-115	Clamp Washer	1
05-05-115	Clamp Nut	1
01-35220	Shaft	1
05-03-514	Shaft Key	1

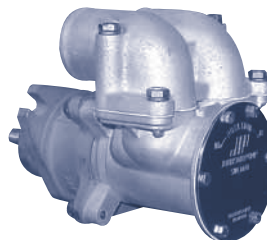
## JOHNSON (Hino W04C-T120 / 3000)



**10-24365**

Part No.	Description	Qty
1028B	Impeller	1
01-42445	Gasket	1
09-20-115	Mechanical Seal	1
01-45174	Seal Washer	1
05-34-105	Seal Snap Ring	1
01-42679	Cam	1
05-04-107	Cam Screw	1
01-42441	Cover	1
05-04-117	Cover Screws	6
01-42443	Wearplate	1
01-42400	Wearplate Pin	1
01-42402	Slinger	1
05-08-21	Ball Bearings	2
01-42537	Bearing Spacer	1
05-29-519	Bearing Seal	1
05-34-21	Snap Ring (SM)	1
05-34-117	Snap Ring (LG)	1
05-04-105	Clamp Screw	1
05-01-115	Clamp Washer	1
05-05-115	Clamp Nut	1
01-35220	Shaft	1
05-03-514	Shaft Key	1
01-46138	Port Flange Gasket	1

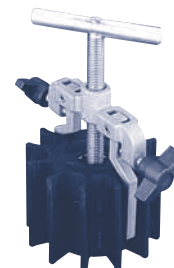
## JOHNSON (Hino W06D-T1 Series)



**10-24413-2**

Part No.	Description	Qty
821B	Impeller	1
01-46286	Gasket	1
09-20-505	Mechanical Seal	1
01-46146	Cam	1
05-04-638	Cam Screw	1
01-46285	Cover	1
05-04-550	Cover Screws	6
01-42443	Wearplate	1
01-42400	Wearplate Pin	1
01-42427-15	Slinger	1
05-08-26	Bearing (SM)	1
05-08-513	Bearing (LG)	1
01-46284-1	Bearing Spacer	1
05-29-526	Bearing Seal	1
05-34-108	Snap Ring (SM)	1
05-34-118	Snap Ring (LG)	1
01-35685	Shaft	1
05-03-514	Shaft Key	1
01-46291	Port Flange Gasket	1

## MERCURISER / HINO (Replacement Impellers)



Impeller Cross Reference

Manufacturer Part No.	Depco Part No.
16131-1300	BA 845
16131-1350	JA 31130-0061
47-8013326-01	JA 17937-0001
47-831311350	JA 31130-0061
47-853126	SH 15000K
47-59362	JA 17954-0001

Impeller Puller .....Page 161