

CONTENTS

ENGINE COOLING

INDEX

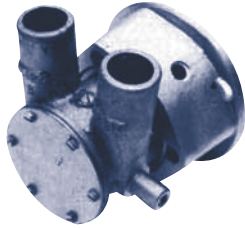
HOME

NEXT

BACK

JABSCO

350 - 454 Chevy Block



22740 Series

Volvo # 826456

Part No.	Description	Qty
22120-0001	Impeller	1
92600-0330	Bearing	1
22317-1000	Brg Hsg & Shaft	1
11830-0000	Cover	1
22318-0000	Cam (1/2 Flow)	1
22308-0000	Cam (Full Flow)	1
3298-0000	Gasket	1
96080-0080	Mechanical Seal	1
92700-0060	Lip Seal (Option)	1
91003-0010	Cam Screw	1
91002-0010	Cover Screw	6
18707-0000	Snap Ring	1

*Pump discontinued, use 50410 Series

JABSCO

350 / 454 Chevy Block



23800 Series

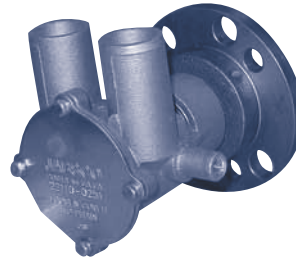
23800-0251 (350 Block)
23800-0201 (454 Block)

Part No.	Description	Qty
22120-0001	Impeller	1
91002-0010	Screw, End Cover	6
11830-0000	End Cover	1
3298-0000	Gasket, End Cover	1
91004-0100	Screw, Half Cam	1
91004-0110	Screw, Full Cam	1
22318-0000	Cam, Half (0251)	1
18753-0090	Cam, Full (0201)	1
92700-0060	Seal, Lip	1
3166-0000	Spacer, Seal	1
18753-0325	Shaft, Brg, Hsg.	1
18725-0000	Snap Ring	1
05-08-122	Ball Bearing	1

*Pump discontinued, use 50410 Series

JABSCO

22110 / 22400

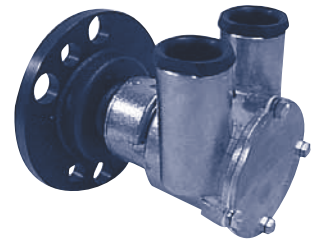


Part No.	Description	Qty
22120-0001	Impeller	1
18753-0656	O-Ring	1
96080-0080	Mechanical Seal	1
92700-0060	Lip Seal	1
18753-0657	End Cover Screws	4
22114-0000	End Cover	1

*Pump discontinued, use 50410 Series

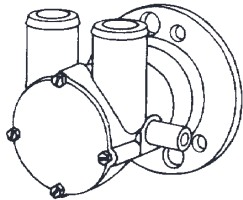
JABSCO

50410
Volvo # 3860703 (50410-1201)



Part No.	Description	Qty
18777-0001	Impeller	1
92000-1403	O-Ring	1
96080-0080	Mechanical Seal	1
92700-0060	Lip Seal	1
X3001-151F	End Cover Screws	4
X3081-081F	Washers	4
50416-0000	End Cover	1
22318	Cam (Full)	1
X3003-149K	Cam Screw	1
22308	Cam 1/2	1

JOHNSON (Single BRG Version) 350 Chevy Block



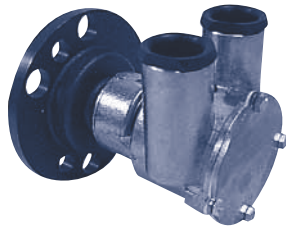
10-24076-1*

Old Volvo # 841640

Part No.	Description	Qty
1027B	Impeller	1
05-08-122	Ball Bearing	1
09-20-503	Mech. Seal	1
05-34-105	Ret. Ring	1
05-04-550	Screw (Cover)	4
05-04-174	Screw	1
01-45315	Gasket	1
01-45312-1	End Cover	1
01-42446	Washer	1
01-45329	Cam	1
01-45314	Shaft	1

*Pump discontinued, use 1024228-1

JOHNSON 350 Chevy Block



(F5B-9)

10-24228-1

Volvo # 841640

Part No.	Description	Qty
1027B	Impeller	1
01-45329	Cam	1
05-04-174	Cam Screw	1
01-45312-1	Cover	1
01-45315	Gasket	1
05-29-105	Seal	1
01-45680	Seal Washer	1
05-08-128	Ball Bearing	2
05-06-501	O-Ring	1
05-04-550	Screw	4
09-45807	Shaft/Bearing Carrier	1

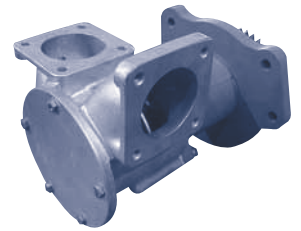
JABSCO AQ180 / MB36B



10550-200

Part No.	Description	Qty
1210-0001	Impeller	1
3298-0000	Gasket	1
18753-0049	Seal	1
91002-0020	Cover Screws	6
490-0001	Cam	1
91003-0010	Cam Screws	1
92700-0060	Pump End Oil Seal	1
SP2601-39	Bearing	2
SP2701-15	Drive End Oil Seal	1
10417	Shaft	1
7883-0000	Wearplate	1
11830-0000	Cover	1

JABSCO D12



29830-0001

Volvo # 3838207

Part No.	Description	Qty
17938-0111	Impeller	1
X4020-399A	Cover O-Ring	1
6408-0000	Water Seal	1
X3001-176F	Cover Screws	5
29838-0000	Cam	1
X3001-205F	Cam Screw	1
92701-0180	Bearing Seal	1
SP2601-37	Ball Bearing	2
29827-0100	Shaft	1
2574-0000	Wearplate	1
29825-0000	Cover	1