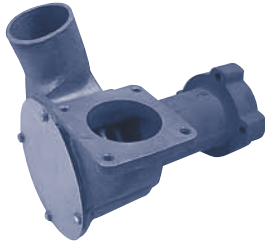


- CONTENTS
- ENGINE COOLING
- INDEX
- HOME
- NEXT
- BACK

## JABSCO



18790-0001

CAT # 9Y5427

Part No.	Description	Qty
18786-0001	Impeller	1
18785-0000	Cam Ring	1
96080-0371	Mechanical Seal	1
18754-1004	Seal O-Ring	1
18784-2000	End Cover	1
18787-0000	Wearplate	1
18721-0000	Snap Ring (SM)	1
18725-0000	Snap Ring (LG)	1
18785-ORING	O-Ring	1
18752-0000	Ball Bearing	2
CAT 3N4858	Shaft	1
92701-0180	Bearing Seal	1

## JABSCO

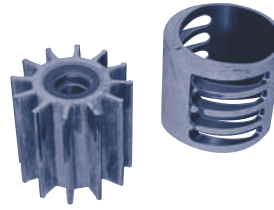


17810-1000

CAT # 5N9357

Part No.	Description	Qty
17935-0001	Impeller	1
DD 5115395	Port Gasket	2
18711-0000	Snap Ring (SM)	1
18712-0000	Snap Ring (LG)	1
6408-0000	Mechanical Seal	1
91005-0040	Cam Srew	1
91005-0040	Cover Screw	5
816-0000	Gasket	1
817-0000	Bearing Seal	1
834-0001	Cam	1
2574-0000	Wearplate	1
3181-0000	Slinger	1
12062-0000	End Cover	1
92600-0260	Ball Bearing	1

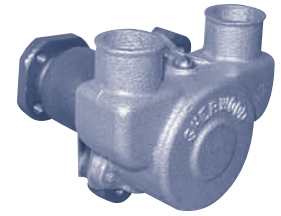
## CATERPILLAR



Impellers and Cams

Impeller Cross-Reference	
CAT Part No.	Depco Part #
1095324	SH 18000K
1095327	SH 18000K
1230492	SH 18000K
1239785	18000K
1L4774	JA 836-0001
1W5664	SH 17000K
3N1888	JA 17370-0001
3N4859	JA 17370-0001
3N4860 (Cam Ring)	JA 17374-1000
3N5895	JA 17018-0001
3N4859	JA 17370-0001
4L8470	JA 17936-0001
5L6042	JA 17935-0001
5N9360	JA 17935-0001
7E0321	SH 17000K
7E3020 (Cam Ring)	JA 18785-0000
Impeller Puller	page 161

## SHERWOOD 6.2 Diesel

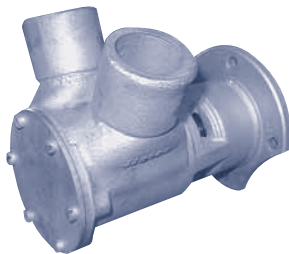


G-56

North American Diesel

Part No.	Description	Qty
10615K	Impeller	1
12859	Mechanical Seal	1
4264	Seal Spacer	1
12231	Cover O-Ring	1
12855	Gasket	1
12856	Wearplate	1
10944	Cam	1
10515C	Cam Screw	1
4432	Key	1
12211	Ball Bearing	2
5133	Bearing Spacer	1
4258	Snap Ring (SM)	3
4259	Snap Ring (LG)	2
12857	Cover Bolts	3
12710	Lock Washers	3
12596	Shaft	1
10769	Hub	1
9420	Hub Pin	1

## JABSCO BMW Diesel



29700-1331

Part No.	Description	Qty
17018-0001	Impeller	1
SP1003-0111	Screw	6
11831-0000	End Cover	1
890-0000	Gasket	1
23342-0000	Cam	1
91004-0090	Cam Screw	1
4156-0000	Wearplate	1
29706-0000	Seal Washer	1
SP6080-0469	Mechanical Seal	1
SP2701-0903	Lip Seal	1
92600-0110	Bearing	2
29707-0000	Shaft	1

## JOHNSON D 7/12



10-35091-2

BMW

Part No.	Description	Qty
808B	Impeller	1
05-29-139	Lip Seal	2
01-43240	Gasket	1
01-43239	End Cover	1
05-04-642	Cover Screw	4
01-45087	Wearplate	1
01-42400	Wearplate Pin	1
05-08-503	Ball Bearing	2
05-34-131	Snap Ring	1
01-42910	Full Cam	1
05-04-114	Full Cam Screw	1
01-42415	1/2 Cam	1
05-04-553	1/2 Cam Screw	1
05-01-120	Screw Washer	1
01-45193	Shaft	1
05-03-504	Drive Pin	1

## JOHNSON D 150/190 / D 530TA/636TA



10-24127-1

BMW

Part No.	Description	Qty
1028B	Impeller	1
05-29-105	Lip Seal	2
01-45181	Seal Spacer	1
01-42445	Gasket	1
01-42441	End Cover	1
05-04-174	Cover Screw	6
01-42679	Cam	1
05-04-107	Cam Screw	1
05-06-501	Slinger O-Ring	1
05-08-128	Ball Bearing	2
01-45248	Shaft	1

## JOHNSON B 130



10-24119-2

BMW / Mercedes

Part No.	Description	Qty
1027B	Impeller	1
05-29-105	Lip Seal	1
01-45186	Seal Spacer	1
01-42401	Gasket	1
01-42398	End Cover	1
05-04-642	Cover Screw	6
01-42397	Cam	1
05-04-117	Cam Screw	1
01-42399	Wearplate	1
01-42400	Wearplate Pin	1
05-06-500	Slinger O-Ring	1
05-08-123	Ball Bearing	2
01-45024	Bearing Guide	1
01-45187	Shaft	1
01-45030	Coupling	1