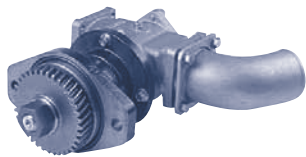


CUMMINS AND CATERPILLAR PUMPS

- CONTENTS
- ENGINE COOLING
- INDEX
- HOME
- NEXT
- BACK

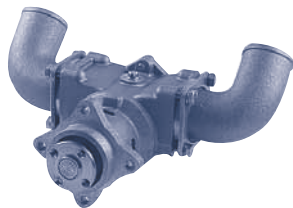
SHERWOOD OSB



G2601A
Cummins

Part No.	Description	Qty
26000K	Impeller	1
19879	O-Ring (Cover)	1
23839	Mech. Seal	1
24079	Slinger	1
19869	Bearing Seal	1
24223	Shaft & Bearing	1
24075	Cam	1
19714	Cam Screw	1
24074	Cover	1
24073	Wearplate	1
15952	Snap Ring (SM)	2
15942	Snap Ring (LG)	1

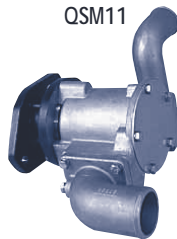
SHERWOOD OSC



P2701X
Cummins

Part No.	Description	Qty
27000K	Impeller	1
15945	O-Ring (Cover)	1
23799	Mech. Seal	1
15951	Ball Bearing	2
24147	Shaft	1
18271	Cam	1
19714	Cam Screw	1
18742	Cover	1
24162	Wearplate	1
15952	Snap Ring (SM)	2
15942	Snap Ring (LG)	1

SHERWOOD QSM11



G1810 (Old # G1809)
Being Replaced by G-1814X
Cummins # 3349392

Part No.	Description	Qty
18000K	Impeller	1
23512	Mechanical Seal	1
23272	Shaft	1
23489	Ball Bearing	2
19869	Bearing Seal	1
23387	Bearing Spacer	1
23425	Bearing Shield	1
19836	Wearplate	1
19837	End Cover	1
19626	Cover Screw	5
21561	Quad Ring	2
21106	Cam Liner (G1810)	2
21533	Cam Liner (G1809)	2
19867	Snap Ring (LG)	1
19762	Snap Ring (SM)	2
21566	Pin	1
15944	Lockwasher	13
A5345	Mounting Gasket	1
A5232	Port O-Ring	1

JABSCO VT55MBC / VT555MBC / NT855M



7420-0101
Cummins

Part No.	Description	Qty
17935-0001	Impeller	1
816-0000	Gasket	1
6407-0010	Mechanical Seal	1
834-0000	Cam	1
91005-0040	Cam Screw	1
2574-0000	Wearplate	1
12062-0000	End Cover	1
91005-0040	Cover Screws	5
92600-0040	Ball Bearing	1
817-0000	Inner Bearing Seal	1
818-0000	Outer Bearings Seal	2
18711-0000	Snap Ring (SM)	1
18712-0000	Snap Ring (LG)	1
3181-0000	Slinger	1
9527	Shaft	1

JABSCO NH250M



3570

Cummins # 21731 / 180128

Part No.	Description	Qty
836-0001	Impeller	1
816-0000	Gasket	1
6408-0000	Mechanical Seal	1
3181-0000	Slinger	1
92600-0040	Ball Bearing	1
92700-0280	Inner Bearing Seal	1
818-0000	Outer Bearing Seal	1
7257-0000	Cam & Wearplate	1
91005-0040	Cam Screw	1
2574-0000	Wearplate Only	1
12062-0000	End Cover	1
91005-0040	Cover Screw	5
18711-0000	Snap Ring (SM)	1
18712-0000	Snap Ring (LG)	1

JABSCO

311 / 320 / 330 / 333



8950-0001

CAT # 5L6042

Part No.	Description	Qty
17935-0001	Impeller	1
816-0000	Gasket	1
834-0001	Cam	1
2574-0000	Wearplate	1
3181-0000	Slinger	1
6408-0000	Mechanical Seal	1
12062-0000	Cover	1
91005-0040	Cam Screw	1
91095-0060	Cover Bolt	6
92000-0120	O-Ring	1
92600-0040	Ball Bearing	1

JABSCO

D333C / D334



14300 / 14440 / 17520

CAT # 7L4197 (14300)
CAT # 8L3887 / 8F3887 (14440)
CAT # 5R106 (14440)
CAT # 7C9656 / 7C9657 (17520)
CAT # 7C9658 / 7C9659 (17520)

Part No.	Description	Qty
17935-0001	Impeller	1
816-0000	Gasket	1
834-0001	Cam	1
2574-0000	Wearplate	1
12062-0000	Cover	1
6407-0010	Mechanical Seal	1
91005-0040	Cam Screw	1
91095-0060	Cover Bolt	5
91095-0280	Hsg Bolt	4
91601-0130	Hsg Washer	4
18752-0000	Ball Bearings	1
817-0000	Bearing Seal	1

JABSCO

353 / 343



6980-0011

CAT # 4L5788

Part No.	Description	Qty
17936-0001	Impeller	1
91005-0040	Cover Screw	5
12062-0000	Cover	1
816-0000	Gasket	1
6408-0000	Mechanical Seal	1
2574-0000	Wearplate	1
6987-1010	Shaft	1
DD 519BRG	Ball Bearing	1
18718-0000	Snap Ring	1
91402-0230	Key	1
DD 23501662	Mounting Gasket	1
817-0000	Bearing Seal	1
3181-0000	Slinger	1
6988-0000	Cam	1
91005-0040	Cam Screw	1
DD 5115395	Square Port Gasket	2
DD 5112143	Round Port Gasket	2