

CONTENTS

ENGINE COOLING

INDEX

HOME

NEXT

BACK

JABSCO V903 / VT903

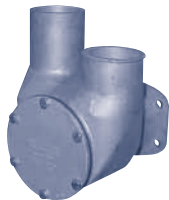


12600-0001

Cummins # 160596 / 162209

Part No.	Description	Qty
836-0001	Impeller	1
6408-0000	Mechanical Seal	1
12608-0000	Gasket	1
12179-0000	End Cover	1
91005-0060	Cover Screw	5
12176-0000	Cam Liner (Bonze)	1
12606-0000	Wearplate	1
92600-0040	Ball Bearing	1
817-0000	Bearing Seal	1
18712-0000	Brg Snap Ring	1
3181-0000	Slinger	1
12607-0000	Shaft	1
12595-0000	Drive Gear	1

JABSCO VT902

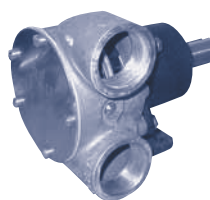


18200-0001

Cummins # 217308

Part No.	Description	Qty
17370-0001	Impeller	1
96080-0371	Mechanical Seal	1
18721-0000	Seal Snap Ring	1
17365-1000	Gasket	1
17378-1000	End Cover	1
91005-0040	Cover Screw	6
17374-1000	Cam Liner (Plastic)	1
17372-1000	Wearplate	2
3181-0000	Slinger	1
DD 519BRG	Ball Bearing	1
817-0000	Bearing Seal	1
18718-0000	Brg Snap Ring	1
18754-1004	O-Ring	1
18204-0000	Shaft	1

JABSCO V555M / VT555M

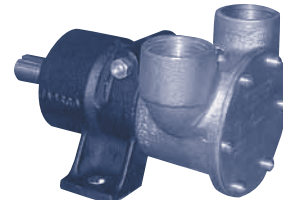


21680-05

Cummins # 556850

Part No.	Description	Qty
17935-0001	Impeller	1
816-0000	Gasket	1
6408-0000	Mechanical Seal	1
2551-0000	Cam	1
91005-0050	Cam Screw	1
12062-0000	End Cover	1
91005-0040	Cover Screw	5
2574-0000	Wearplate	1
92600-0040	Ball Bearing	1
817-0000	Inner Bearing Seal	1
818-0000	Outer Bearing Seal	1
18711-0000	Snap Ring (Sm)	1
18712-0000	Snap Ring (Lg)	1
9527	Shaft	1

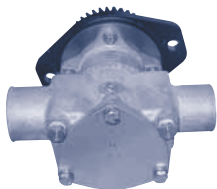
JABSCO V504 / V504M



11600

Part No.	Description	Qty
17937-0001	Impeller	1
18753-0049	Mechanical Seal	1
890-0000	Gasket	1
934-0000	Cam	1
91004-0090	Cam Screw	1
11831-0000	End Cover	1
91003-0010	Cover Screw	6
4156-0000	Wearplate	1
11608	Shaft	1
914-0000	Outer Bearing Seal	1
SP92701-0940	Inner Bearing Seal	1
SP2601-42	Ball Bearing	1

SHERWOOD 6C Series

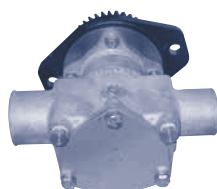


P1722X (Old # P173)

Cummins # 3912139 (P173)
Cummins # 3922589 / 3964989 (P1722X)

Part No.	Description	Qty
17000K	Impeller	1
16046	Shaft (P173)	1
24470*	Shaft With Bearing(P1722)	1
15952	Snap Ring (SM)	3
15942	Snap Ring (LG) (P173)	1
18271	Cam	1
10515C	Cam Screw	1
18441	Wearplate	1
16029	Cover Screw	3
15944	Lock Washer	3
15945	O-Ring for Cover	1
15955	Mechanical Seal	1
18742	Cover Plate	1
15951	Ball Bearing	2
19674	Bearing Lip Seal	1
15948	Impeller Key (P173)	1
19667	Key (Other Models)	1
14184	Gear (173)	1
19885	Gear (1722)	1
11339	Drain Plug	2
15959	Seal Washer	1
ON 3008400	Mounting Gasket	1

SHERWOOD 6C Series

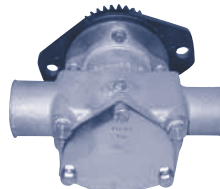


P1722A

(Replaces P1722X)

Part No.	Description	Qty
17000K	Rubber Impeller	1
24470*	Shaft With Bearing	1
15951	Ball Bearing	2
15952	Snap Ring (SM)	2
24222	Spacer	1
15959	Seal Washer	1
23799	Mech Seal (SIL. CARB.)	1
21570	Gasket	1
24250	Bearing Seal	1
19730	Hex Nut-M14	1
19708	Flange Head Bolt	4
18271	Cam	1
19714	Cam Screw	1
19712	O-Ring (Cam Screw)	1
19667	Key	1
15945	O-Ring (Cover)	1
18742	Cover Plate	1
15944	Lock Washer	3
19626	Cover Bolt	3
339	Pipe Plug	2
24156	Slinger	1
24162	Pin/Plate Assy	1
ON 3008400	Mounting Gasket	1

SHERWOOD 6B Series - 300 HP

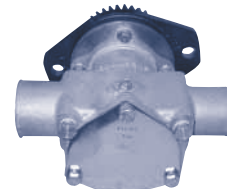


P1716X (Old # P1712)

Cummins # 3919899 (P1712)
Cummins # 3922590 (P1716X)

Part No.	Description	Qty
17000K	Impeller	1
16046	Shaft (P1712)	1
24470*	Shaft With Bearing(P1716)	1
15952	Snap Ring (SM)	3
15942	Snap Ring (LG)	1
18271	Cam	1
10515C	Cam Screw	1
18441	Wearplate	1
16029	Cover Screw	3
15944	Lock Washer	3
15945	O-Ring for Cover	1
15955	Mechanical Seal	1
18742	Cover Plate	1
15951	Ball Bearing	2
19674	Bearing Lip Seal	1
19667	Key (Other Models)	1
14184	Gear (1712)	1
19885	Gear (1716)	1
11339	Drain Plug	2
15959	Seal Washer	1
ON 3008400	Mounting Gasket	1

SHERWOOD 6B Series - 300 HP



P1716A

Replaces P1716X
Replaces P1712

Part No.	Description	Qty
17000K	Rubber Impeller	1
24470*	Shaft With Bearing	1
15952	Snap O-Ring (SM)	2
24222	Spacer	1
15951	Ball Bearing	2
15959	Flat Washer	1
24156	Slinger	1
23799	Mech Seal (Sil. Carb.)	1
19667	Key	1
24162	Pin/Plate Assy	1
19712	O-Ring (Cam Screw)	1
19714	Cam Screw	1
21570	Gasket	1
24250	Bearing Seal	1
19730	Hex Nut-M14	1
18271	Cam	1
19708	Flange Head Bolt	4
15945	O-Ring (Cover)	1
18742	Cover Plate	1
19626	Cover Bolt	3
15944	Washer-Lock	3
339	Pipe Plug	2
ON 3008400	Mounting Gasket	1

* These shafts now come as an assembly with bearings.