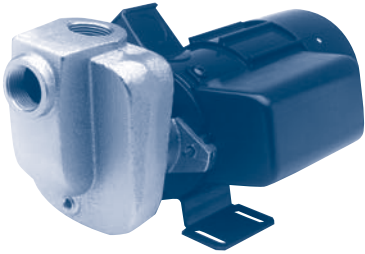


LIVEWELL AND LOW PRESSURE WASHDOWN

PRIMO



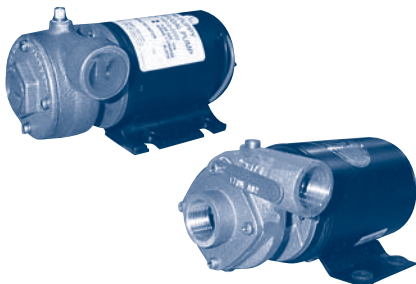
Compact 12 vdc and 115 vac

3/4" BRONZE SELF-PRIMER IN 12 VDC AND 115 VAC

The Primo bronze self-priming centrifugal can prime up to 3 feet and pump up to 20 gpm. The self-priming feature also prevents air lock by enabling the pump to evacuate air from the suction line. It has a lightweight and compact design with 3/4" FPT ports and 12 vdc or 115 vac motor.

Model Number	Volts/ Amps	Hz	GPM at Feet of Head			Max Head	Port Size
			0'	5'	10'		
DP Primo 115V	115 vac	60	20	16.5	11.5	16'	3/4" FPT
DP Primo 12V	12 vdc/10.5		17	14	8	14'	3/4" FPT

JABSCO / OBERDORFER



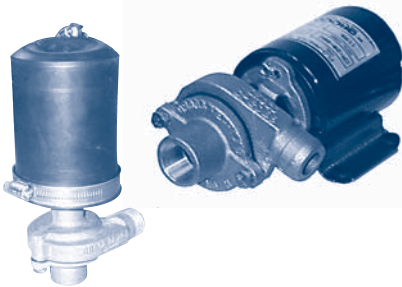
Bronze Recirculating Series

3/4" BRONZE RECIRCULATORS IN AC AND DC

These bronze centrifugal pumps by Oberdorfer and Jabsco are available with a mechanical or lip seal in 115 vac, 230 vac, 12 vdc, 24 vdc or 32 vdc. They are lightweight, compact and come standard with 3/4" FPT ports. See page 132 and 134 for Jabsco and Oberdorfer service parts.

Model Number	Brand	Volts	Hz	GPM at Feet of Head			Max Head	Seal Type
				0'	5'	10'		
JA 18580-0000	Jabsco	115 vac	60	22	20	15	15'	Lip
JA 18510-000X	Jabsco	12 or 24 vdc		20	15	7.5	12'	Lip
JA 18510-002X	Jabsco	12 or 24 vdc		15	12	5.5	12'	Mech.
OB 172B-B26	Oberdorfer	115 vac	50/60	18	15	10	14'	Mech.
OB 172B-B27	Oberdorfer	230 vac	50/60	18	15	10	14'	Mech.
OB 172B-Series	Oberdorfer	12, 24 or 32 vdc		20	14	6	14'	Mech.
OB 170M-Series	Oberdorfer	12, 24 or 32 vdc		20	14	6	14'	Lip

GROCO



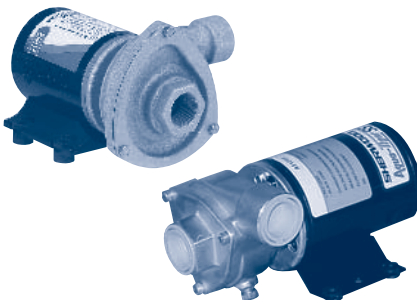
Submersible or Open-Air

3/4" SPLASH PROOF RECIRCULATORS IN 12, 24 AND 32 VDC

This unique pump series adds a submersible motor boot to Groco's successful bronze recirculation pump line creating a waterproof recirculator for wet or submerged environments. Groco's original recirculators are also available with their continuous duty non-submersible motors (listed below). All models come standard with a mechanical seal. See page 145 for service parts.

Model Number	Volts DC	Motor Enclosure	GPM at Feet of Head			Duty	Dimensions
			0'	5'	10'		
GC CP-20	12, 24 or 32	Non-Submersible	17	11.7	7.3	Cont.	3.5" x 4.5" x 7.75"
GC CP-20-S	12, 24 or 32	Submersible	17	11.7	7.3	Int.	3.5" x 4.5" x 8.75"
GC CP-5009	12, 24 or 32	Submersible	30	17	9	Cont.	4.5" x 4.5" x 9.5"

CYCLONE / AQUA TIGER



Jabsco / Sherwood

3/4" STAINLESS STEEL RECIRCULATORS IN 12 AND 24 VDC

These stainless centrifugals combine the corrosion resistance of a stainless steel housing and the long service life of a mechanical seal. Sherwood's AT12SS Aqua Tiger is an upgraded stainless version of the traditional bronze Jabsco, Oberdorfer and Groco recirculating pumps shown above. Jabsco's 508X0 Cyclone series is a totally new design available in two types. One was engineered to deliver high flow while the other was engineered to deliver high pressure.

Model Number	Volts DC	Max. Amps	GPM at Feet of Head			Max. Head	Dimensions (H x W x L)
			0'	10'	25'		
SH AT12SS	12	5.5	20	15.5	—	21'	4 1/2" x 4 1/2" x 7 3/8"
JA 50830-0012	12	10	31	16	—	17.5'	4 1/2" x 4 1/2" x 6 5/8"
JA 50830-0024	24	5	31	16	—	17.5'	4 1/2" x 4 1/2" x 6 5/8"
JA 50870-0012	12	25	23.5	20	15	54'	4 1/2" x 4 1/2" x 7 5/8"
JA 50870-0024	24	15	23.5	20	15	54'	4 1/2" x 4 1/2" x 7 5/8"

CONTENTS

PUMPING PRINCIPLES

ENGINE COOLING

ENGINEERING TABLES

TROUBLE-SHOOTING GUIDE

INDEX

HOME

NEXT

BACK