

# ENGINE COOLING PUMPS

CONTENTS

PUMPING PRINCIPLES

ENGINE COOLING

ENGINEERING TABLES

TROUBLE-SHOOTING GUIDE

INDEX

HOME

NEXT

BACK

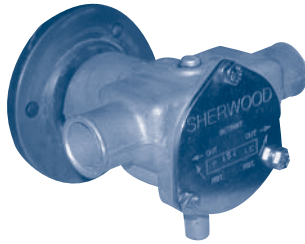
## JOHNSON Peninsular 8.2 Liters



**10-24349-1**  
Peninsular

Part No.	Description	Qty
1028B	Impeller	1
05-29-105	Lip Seal	2
01-45181	Seal Spacer	1
01-42445	Gasket	1
01-42441	End Cover	1
05-04-174	Cover Screw	6
01-42679	Cam	1
05-04-107	Cam Screw	1
05-06-501	Slinger O-Ring	1
05-08-128	Ball Bearing	2
01-46092	Shaft	1

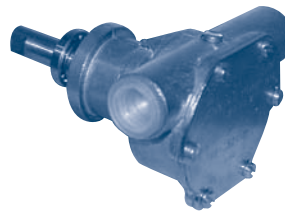
## SHERWOOD US Marine - 0351 Ford



**P151**  
US Marine

Part #	Description	Qty
15000K	Impeller	1
10515C	Cam Screw	1
12710	Lock Washer	3
17485	Cap Screw	3
18509	Cover	1
4432	Key	1
12231	O-Ring	1
18652	Lip Seal	1
14990	Slinger	1
18662	Ball Bearing	2
6837	Snap Ring (SM)	1
8781	Snap Ring (LG)	1
18398	Cam	1
18671	Shaft	1

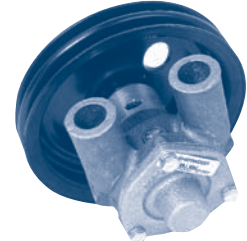
## JOHNSON Vetus M3.10



**10-35240-1**  
Vetus den Ouden

Part #	Description	Qty
810B	Impeller	1
01-45284	Gasket	1
01-45282	End Cover	1
05-04-642	Cover Screw	6
01-42389	Cam	1
05-04-114	Cam Screw	1
05-04-124	Screw	1
05-29-139	Lip Seal	2
01-45955	Seal Spacer	1
05-08-130	Ball Bearing	2
05-08-508	Ball Bearing	1
05-34-131	Snap Ring	1
05-01-120	Washer	1
01-45569	Shaft	1
01-43238	Mounting Clip	2

## SHERWOOD 4.3 V6 / Chevy 305 and 350

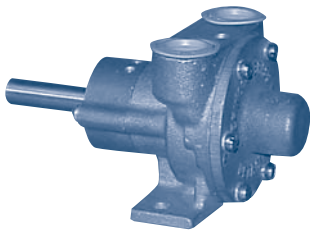


**R991**  
Yamaha # 10100000

Part No.	Description	Qty
9959K	Impeller	1
18464	Shaft	1
4258	Ext. Ret. Ring	3
4259	Int. Ret. Ring	1
4257	Ball Bearing	1
18427	Housing	1
12231	O-Ring	1
18428	Cover	1
12710	Lock Washer	3
18266	Capscrew 1/4 x 20 x 3/4	3
06333	Bushing	1
15883	Cam	1
10515C	Cam Screw	1
10927	Seal & Seat Assy	1

Yamaha Impeller Cross Reference  
 Yamaha Part # ..... Depco Part #  
 YSC-101-03-01 ..... SH 9959K  
 GTA-12457-00 ..... JS 812B

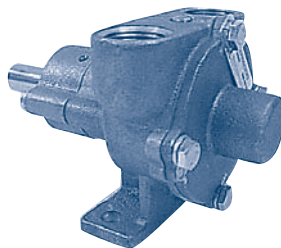
## SHERWOOD



**R-20-G / R-30-G**

Part No.	Description	Qty
10077	Impeller	1
10286	Gasket, Cover	1
11367	Seal	1
10281	Cover Assembly	1
10289	Shaft	1
4306	Ball Bearing	1
10198	*Ball Bearing Housing Ass'y	1
10285	Cam	1
10093	Key	1
4303	Int. Ret. Ring	1
4304	Ext. Ret. Ring	3
1311	Dowel Pin	2
2075G	Bushing	1
10197	Gasket, Housing	1
336	Pipe Plug	1

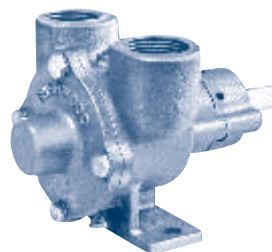
## SHERWOOD



**R-40-G / R-50-G**

Part No.	Description	Qty
9959	Impeller	1
10103	Gasket, Cover	1
10927	Seal	1
10096	Cover Assembly	1
10175	Shaft	1
4257	Ball Bearing	1
10172	*Ball Bearing Housing Ass'y	1
10162	Cam (R40G)	1
10072	Cam (R50G)	1
10186	Cam (R60G)	1
4432	Key	1
4259	Int. Ret. Ring	1
4258	Ext. Ret. Ring	3
1311	Dowel Pin	2
06333	Bushing	1
10171	Gasket, Housing	1
336	Pipe Plug	1

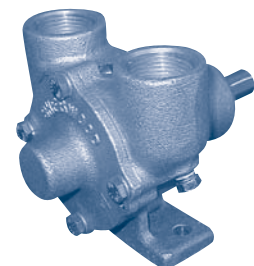
## SHERWOOD



**R-60-G / R-70-G / R-80-G**

Part No.	Description	Qty
10187	Impeller	1
10185	Gasket, Cover	1
10927	Seal	1
10183	Cover Assembly	1
10184	Shaft	1
4257	Ball Bearing	1
10172	*Ball Bearing Housing Ass'y	1
10186	Cam (R60G)	1
10813	Cam (R70G)	1
10295	Cam (R80G)	1
4432	Key	1
4259	Int. Ret. Ring	1
4258	Ext. Ret. Ring	3
1311	Dowel Pin	2
06333	Bushing	1
10171	Gasket, Housing	1
336	Pipe Plug	1

## SHERWOOD



**R-102**

Part No.	Description	Qty
10615	Impeller	1
10931	Gasket, Cover	1
10927	Seal	1
10183	Cover Assembly	1
18502	Shaft	1
4257	Ball Bearing	1
10929	Cam	1
4432	Key	1
4259	Int. Ret. Ring	1
4258	Ext. Ret. Ring	3
1311	Dowel Pin	2
06333	Bushing	1
336	Pipe Plug	1

\*ASSEMBLY DESCRIPTION: Cover Assembly includes cover and bushing. Ball Bearing Housing Assembly includes ball bearing housing and floating seat.