

ENGINE COOLING PUMPS

- CONTENTS
- PUMPING PRINCIPLES
- ENGINE COOLING
- ENGINEERING TABLES
- TROUBLE-SHOOTING GUIDE
- INDEX
- HOME
- NEXT
- BACK

JABSCO Aifo Iveco



29600-1001

Part #.....	Description	Qty
17937-0001	Impeller	1
890-0000	Gasket	1
SP6080-0469	Water Seal	1
934-0000	Cam	1
91003-0110	Cover Screw	6
91004-0090	Cam Screw	1
SP2700-1027	Oil Seal	1
SP2600-0500	Bearing	2
29607-0000	Shaft	1
4156-0000	Wearplate	1
11831-0000	Cover	1

SHERWOOD Ford 302 and 35 C.I.

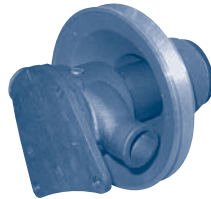


J-70 (1" Ports) / L80 (1 1/4" Ports)

Commander 10-610 Conversions
J70 (CMI-10-610) L 80 (C2-10-610)

Part #.....	Description	Qty
9959K	Impeller (J-70)	1
10615K	Impeller (L-80)	1
13274	Shaft	1
12622	Key (Drive)	1
4258	Ret. Ring - Ext.	3
4259	Ret. Ring - Int.	2
12211	Ball Bearing	2
5133	Spacer	1
12857C	Screw (Cover)	3
12710	Lock Washer	3
12856	End Plate	1
10515	Spacer (Cam)	1
4432	Key (Impeller)	1
12231	O-Ring	1
12855	Gasket	1
4264	Seal Washer	1
12859	Seal Assy	1
15883	Cam (J70)	1
10944	Cam (L80)	1

OBERDORFER Chevy 327 and 427 C.I.



402M-3

Daytona Marine & John Deere

Part #.....	Description	Qty
6603	Impeller	1
6659	Cover	1
6637	Shaft	1
6606	Cam	1
32230	Water Seal	1
6609	Bearing Seal	2
5928	Ball Bearings	2
5925	Snap Ring Bearing	1
5926	Snap Ring Shaft	2
6631	Washer for Seal	1
5475	Impeller Key	1
6684	O-Ring (Cover)	1
6775	Screw	6
7300-62	Cam Screw	1
5016	Washer (Pulley)	3
6958	Screw (Pulley)	3
6661	Pulley	1
6567	Pulley Key	1
6931	Pulley Bushing	1
6685	Cam Pin	1
6635	Wearplate	1

JOHNSON K 34A / K 34M

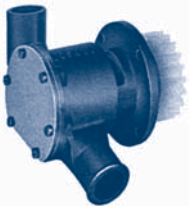


10-35187-3

Engel, Max

Part #.....	Description	Qty
808B	Impeller	1
05-29-139	Lip Seal	2
01-43240	Gasket	1
01-43239	End Cover	1
05-04-642	Cover Screw	4
01-45087	Wearplate	1
01-42400	Wearplate Pin	1
05-08-130	Ball Bearing	2
05-34-131	Snap Ring (LG)	1
05-34-501	Snap Ring (SM)	1
01-42910	Cam	1
05-04-114	Cam Screw	1
05-01-120	Screw Washer	1
01-45669	Shaft	1
05-06-521	Mounting O-Ring	1
01-43238	Mounting Clamp	2

JABSCO Owens - Flagship V-8

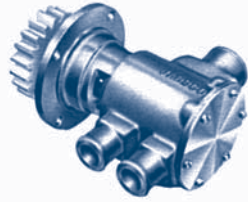


12280-0001

Flagship

Part #.....	Description	Qty
920-0001	Impeller	1
91003-0010	Screw	6
12294-0000	End Cover	1
12288-0000	Gasket	1
12287-0000	Shaft	1
12284-0000	Body	1
96080-0080	Seal	1
913-0000	Bearing Seal	1
92600-0060	Bearing	1
18724-0000	Retaining Ring	1
9103-0000	Gear	1
93100-0040	Roll Pin	1

JABSCO Owens - Flagship V-8

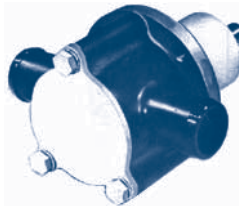


14210-0001

Flagship

Part #.....	Description	Qty
1210-0001	Impeller	2
91002-0020	Screw	6
11830-0000	End Cover	1
3298-0000	Gasket	1
7038-0000	Wearplate	2
96080-0080	Seal	1
14217-0000	Shaft	1
913-0000	Bearing Seal	1
92600-0060	Bearing	1
9103-0000	Gear	1
93100-0040	Roll Pin	1
18724-0000	Retaining Ring	1
6148-0040	Cam	2
91003-0070	Screw (Cam)	2

JABSCO Ford 302 / 351 C.I.



17410 Series

Glastron 190 / 255

Part No.	Description	Qty
3085-0001	Impeller	1
9215-0000	Key (Shaft)	1
18753-0131	Retaining Ring	1
17103-2000	Bearing Housing	1
17388-0010	Shaft & Bearing Assy	1
96080-0080	Seal	1
17404-0000	Body	1
17232-0000	End Cover	1
91602-0130	Lock Washer	3
91095-0540	Bolt (Hex Head)	3
17847-0000	Wearplate (Stainless) . N/A	
17408-0000	Gasket (End Cover & Body)	2
17848-0000	Gasket (Wearplate)	1
18730-0000	O-Ring	1

SHERWOOD Ford 121 / 182 / 302 C.I.



G-95-1

Glastron

Part No.	Description	Qty
9959K	Impeller	1
12859	Mechanical Seal	1
4264	Seal Spacer	1
12231	Cover O-Ring	1
12855	Gasket	1
12856	Wearplate	1
15883	Cam	1
10515	Cam Screw	1
4432	Key	1
12211	Ball Bearing	2
5133	Bearing Spacer	1
4258	Snap Ring (SM)	3
4259	Snap Ring (LG)	2
12857	Cover Bolts	3
12710	Lock Washers	3
12664	Shaft	1
11543	Pin	1