

CONTENTS

PUMPING PRINCIPLES

ENGINE COOLING

ENGINEERING TABLES

TROUBLE-SHOOTING GUIDE

INDEX

HOME

NEXT

BACK

## SHERWOOD LM318X, LM340 and 360

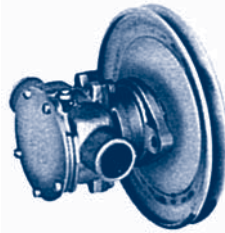


G-5 / G-7 / G-7B, (6 1/2" Pulley)  
G-50 (7 1/2" Pulley)

Chrysler # 3675763 (G-5) - Replaced by G-7B  
Chrysler # 4142878 (G-7) - Replaced by G-7B  
Chrysler # 2619212 (G-50)

Sherwood # ..	Description .....	Qty
10615K	Impeller .....	1
12859	Seal Assy .....	1
4264	Seal Washer .....	1
12211	Ball Bearing .....	2
12233	Shaft (G-5, G-50) .....	1
13363	Shaft (G-7, G-7B) .....	1
10944	Cam .....	1
12855	Gasket .....	1
12231	O-Ring .....	1
12857	Cover Screw .....	3
12710	Lock Washer .....	3
12856	Wearplate .....	1
5133	Bearing Spacer .....	1
4258	Snap Ring (SM) .....	3
4259	Snap Ring (LG) .....	2
15055	Pulley 6 1/2" (G7, G7B) .....	1
12323	Pulley 7 1/2" (G50) .....	1

## JABSCO LM318X and LM340X



17200-0001 (7 1/2" Pulley)

Part # .....	Description .....	Qty
11979-0001	Impeller .....	1
91003-0010	Screw .....	5
14937-0000	End Cover .....	1
10184-0000	Gasket .....	1
10182-0000	Cam .....	1
91004-0090	Screw (Cam) .....	1
96080-0080	Seal .....	1
17203-0000	Brg. Housing .....	1
14206-0000	Shaft & Brg. .....	1
17239-0000	Spacer .....	1
18719-0000	Ret. Ring .....	1
92400-0190	Pulley .....	1
93100-0070	Pin Roll .....	1
	Complete Pump .....	N/A

(Replaced by SH G-50)

## SHERWOOD Double Pocket Pump



D-55 (2 - 1", 2 - 1 1/4" Ports)  
D-60 / D-65 / D-75 (4 - 1" Ports)

Chrysler # 2847629 (D-55)  
Chrysler # 2847630 (D-60)  
Chrysler # 2847631 (D-65) - Replaced by D-60  
Chrysler # 2847632 (D-75) - Replaced by D-60

Sherwood # .....	Description .....	Qty
9959K	Impeller (Inner) .....	1
9959K	Impeller .....	1
	(Outer D-60, 65, 75) .....	1
10615	Impeller (Outer D-55) .....	1
10927	Seal Assy .....	1
4257	Ball Bearing .....	1
11460	Shaft (D-55) .....	1
11459	Shaft (D-60, 65, 75) .....	1
15883	Cam (Inner) .....	1
10944	Cam (Outer D-55) .....	1
15883	Cam .....	1
	(Outer D-60, 65, 75) .....	1
10609	Gasket (Inner) .....	1
10612	Gasket (Outer D-55) .....	1
10609	Gasket .....	1
	(Outer D-60, 65, 75) .....	1
06333	Bushing .....	1
10625	Wearplate .....	1
4432	Impeller Key .....	2
11515	Drive Key .....	1
4258	Snap Ring (SM) .....	3
4259	Snap Ring (LG) .....	1

## JABSCO Double Pocket Pump



10170-0011 (2 - 1", 2 - 1 1/4" Ports)  
10190-0011 (4 - 1" Ports)

Part # .....	Description .....	Qty
1210-0001	Impeller (Outer) .....	1
11979-0001	Impeller (Inner 10170) .....	1
3085-0001	Impeller (Inner 10190) .....	1
10178-0000	Bearing Hsg. .....	1
10179-0000	Wearplate .....	1
10187-0000	Shaft (10190) .....	1
10180-0000	Shaft (10170) .....	1
10183-0000	Gasket (Outer) .....	1
10183-0000	Gasket (Inner 10190) .....	1
10184-0000	Gasket (Outer 10170) .....	1
10181-0000	Sleeve (Inner) .....	1
490-0000	Cam (Outer) .....	1
490-0000	Cam (Inner 10190) .....	1
10182-0000	Cam (Inner 10170) .....	1
91003-0070	Screw (Cam Outer) .....	1
91003-0070	Screw (Cam Inner 10190) .....	1
91004-0090	Screw (Cam Inner 10170) .....	1
91401-0030	Key .....	1
18722-0000	Ret. Ring .....	1
18724-0000	Ret. Ring Brg. .....	1
913-0000	Seal (Brg.) .....	1
92701-0160	Seal (Outer) .....	1

## JABSCO LM318 - LM340



18940-0010

Part # .....	Description .....	Qty
11979-0001	Impeller .....	1
18836-1000	Shaft .....	1
18753-0006	Pulley .....	1
10182-0000	Cam .....	1
18753-0005	O-ring .....	1
96080-0080	Seal .....	1
92600-0120	Ball Bearing .....	2
See Hardware Kit	Retaining Ring .....	1
See Hardware Kit	Roll Pin .....	1
91004-0090	Cam Screw .....	1
18753-0001	Screw Kit .....	1
See Hardware Kit	Key .....	1
18753-0010	Hardware Kit .....	1

## JABSCO M46-4 and M47-4



8170

Part # .....	Description .....	Qty
920-0001	Impeller .....	1
91003-0010	Cover Screw .....	6
11831-0000	Cover .....	1
3101-0000	Gasket .....	1
4156-0000	Wearplate .....	1
96080-0080	Seal .....	1
91004-0110	Cam Screw .....	1
3255-0000	Bearing Seal .....	1
92600-0060	Bearing .....	1
913-0000	Bearing Seal .....	1
18724-0000	Retaining Ring .....	1
18713-0000	Retaining Ring .....	1
3255-0000	Cam .....	1
For 8170 Lip Seal Version:		
92700-0060	Seal .....	1
92000-0210	O-Ring .....	1
3166-0000	Seal Spacer .....	1
3180-0000	Slinger .....	1

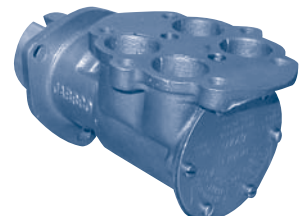
## JABSCO M80 Sea-V



7120(RH) / 7320(LH)

Part # .....	Description .....	Qty
1210-0001	Impeller .....	2
91002-0020	End Cover Screw .....	6
11830-0000	End Cover .....	1
3298-0000	Gasket .....	1
7607-0000	Cam/Wearplate Assy .....	2
96080-0080	Mechanical Seal .....	1
91003-0010	Cam Screw .....	2
913-0000	Bearing Seal .....	1
92600-0060	Ball Bearing .....	1
18724-0000	Snap Ring .....	1
7127-0000	Shaft .....	1

## JABSCO M81 Imperial V8



6740

Chrysler # E5714M

Part # .....	Description .....	Qty
1210-0001	Impeller .....	2
3298-0000	Gasket .....	1
92700-0060	Seal .....	1
92000-0210	Seal O-Ring .....	1
3166-0000	Seal Spacer .....	1
3286-0000	Slinger .....	1
92600-0060	Ball Bearing .....	1
913-0000	Bearing Seal .....	1
7607-0000	Cam & Wearplate .....	2
7038-0000	Wearplate Only .....	2
91003-0010	Cam Screw .....	2
11830-0000	End Cover .....	1
91002-0020	Cove Screws .....	6
6747-0000	Shaft .....	1