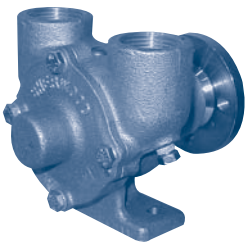


CRUSADER ENGINE PUMPS

- CONTENTS
- PUMPING PRINCIPLES
- ENGINE COOLING
- ENGINEERING TABLES
- TROUBLE-SHOOTING GUIDE
- INDEX
- HOME
- NEXT
- BACK

SHERWOOD 220 / 270 / 300 / 350



E-35

Crusader # 97179

| Part # | Description | Qty |
|--------|----------------|-----|
| 10615K | Impeller | 1 |
| 11744 | Shaft | 1 |
| 10927 | Seal Assy | 1 |
| 4257 | Ball Bearing | 1 |
| 10944 | Cam | 1 |
| 10515C | Cam Screw | 1 |
| 10931 | Gasket | 1 |
| 06333 | Carbon Bushing | 1 |
| 17485 | Cover Screw | 4 |
| 10183 | Cover | 1 |
| 12710 | Lock Washer | 4 |
| 4432 | Impeller Key | 1 |
| 1311 | Pin | 2 |
| 336 | Plug | 2 |
| 97176 | Pulley Hub | 1 |
| 4258 | Snap Ring (SM) | 2 |
| 4259 | Snap Ring (LG) | 1 |

OBERDORFER 220 / 270 / 300 / 350

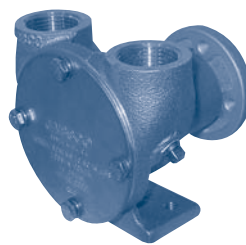


335

Crusader # 97179

| Part # | Description | Qty |
|--------|----------------|-----|
| 8922 | Impeller | 1 |
| 5504 | Cover Screw | 4 |
| 9691 | Cover | 1 |
| 5091 | Carbon Bushing | 1 |
| 9699 | Gasket | 1 |
| 5382 | Snap Ring (SM) | 2 |
| 32886 | Seal Assy | 1 |
| 8334 | Shaft | 1 |
| 5461 | Ball Bearing | 1 |
| 5464 | Snap Ring (LG) | 1 |
| 9694 | Pulley Hub | 1 |
| 5123 | Key | 1 |
| 6600 | Plug | 2 |
| 8885 | Pin | 2 |

JABSCO 220 / 270 / 300 / 350

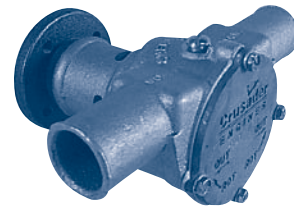


42730-0000

Crusader # 97179

| Part # | Description | Qty |
|------------|--|-----------|
| 18948-0001 | Impeller | 1 |
| 42738-1000 | End Cover | 1 |
| 18753-0330 | O-Ring for End Cover | 1 |
| 42737-1000 | Cam | 1 |
| 4156-0000 | Wearplate | 1 |
| 18730-0000 | O-Ring for Seal | 1 |
| 96080-0080 | Seal | 1 |
| 42734-1000 | Body | 1 |
| 18753-0340 | O-Ring for Cam Screw | 1 |
| 92650-0040 | Plug, 1/8" Pipe | 2 |
| 42739-1000 | Shaft Sub-Assembly | 1 |
| 18753-0331 | Key 3/16" x 3/16" x 7/8" | 1 |
| 18753-0332 | Screw, S.S. Hex Hd, 1/4"-20" x 1/2" | 5 per kit |
| | Washer, S.S. | |
| | 1/4" Lock | 4 per kit |

SHERWOOD 220 / 270 / 300 / 350



P101

Crusader # 40050

| Part # | Description | Qty |
|--------|-----------------|-----|
| 10615K | Impeller | 1 |
| 12859 | Mechanical Seal | 1 |
| 4264 | Seal Washer | 1 |
| 19251 | Gasket | 1 |
| 19291 | End Cover | 1 |
| 13293 | Cover Screw | 4 |
| 343 | Lock Washer | 4 |
| 10944 | Cam | 1 |
| 10515C | Cam Screw | 1 |
| 19295 | Wearplate | 1 |
| 12211 | Ball Bearing | 2 |
| 19293 | Shaft | 1 |
| 4432 | Key | 1 |
| 4258 | Snap Ring (SM) | 2 |
| 4259 | Snap Ring (LG) | 1 |
| 97176 | Pulley Hub | 1 |

SHERWOOD Chevy Conversion



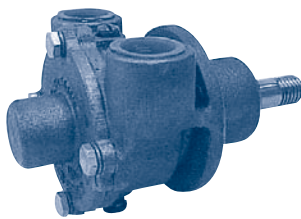
M10270G / M10280G

| Part # | Description | Qty |
|--------|-----------------|-----|
| 9959K | Impeller | 2 |
| 10545 | Mechanical Seal | 1 |
| 10103 | Gasket | 2 |
| 10096 | End Cover | 1 |
| 9958 | Wearplate | 1 |
| 10071 | Cam | 1 |
| 06333 | Bushing | 1 |
| 12710 | Lock Washer | 4 |
| 4257 | Ball Bearing | 1 |
| 10266 | Shaft | 1 |
| 4432 | Key | 2 |
| 4258 | Snap Ring (SM) | 2 |
| 4259 | Snap Ring (LG) | 1 |

Crusader Impeller Cross-Reference

| Crusader # | Depco Part # |
|------------|--------------|
| 20300 | SH 10615K |
| 727103 | SH 10077K |
| 1003026 | SH 9959K |

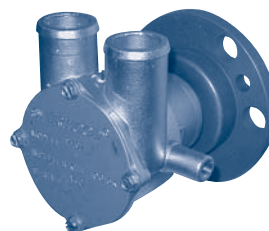
SHERWOOD Interceptor



P10700G

| Part # | Description | Qty |
|--------|-----------------|-----|
| 9959K | Impeller | 1 |
| 10545 | Mechanical Seal | 1 |
| 10103 | Gasket | 1 |
| 10096 | End Cover | 1 |
| 1482 | Cover Screw | 4 |
| 12710 | Lock Washer | 4 |
| 10072 | Cam | 1 |
| 9919 | Cam Screw | 1 |
| 1311 | Pin | 2 |
| 4257 | Ball Bearing | 1 |
| 10256 | Shaft | 1 |
| 4432 | Key | 1 |
| 4258 | Snap Ring (SM) | 2 |
| 4259 | Snap Ring (LG) | 1 |
| 06333 | Bushing | 1 |

SHERWOOD 220 / 270 / 300 / 350



P102

Crusader # 40070

| Part # | Description | Qty |
|--------|----------------|-----|
| 10615K | Impeller | 1 |
| 18652 | Lip Seal | 1 |
| 12231 | O-Ring | 1 |
| 21120 | End Cover | 1 |
| 13293 | Cover Screw | 4 |
| 343 | Lock Washer | 4 |
| 10944 | Cam | 1 |
| 10515C | Cam Screw | 1 |
| 8490 | Ball Bearing | 2 |
| 19308 | Shaft | 1 |
| 4432 | Key | 1 |
| 6837 | Snap Ring (SM) | 1 |
| 5126 | Snap Ring (LG) | 1 |
| 19275 | Adaptor Hub | 1 |

SHERWOOD V6 Chevy



H-10

Crusader # 97512

| Part # | Description | Qty |
|--------|-----------------|-----|
| 9959K | Impeller | 1 |
| 12859 | Mechanical Seal | 1 |
| 4264 | Seal Washer | 1 |
| 12231 | O-Ring | 1 |
| 12855 | Gasket | 1 |
| 12857 | Cover Screw | 3 |
| 12710 | Lock Washer | 3 |
| 10627 | Cam | 1 |
| 10515C | Cam Screw | 1 |
| 12856 | Wearplate | 1 |
| 12211 | Ball Bearing | 2 |
| 5133 | Bearing Spacer | 1 |
| 12596 | Shaft | 1 |
| 4432 | Key | 1 |
| 4258 | Snap Ring (SM) | 3 |
| 4259 | Snap Ring (LG) | 2 |
| 97176 | Pulley Hub | 1 |