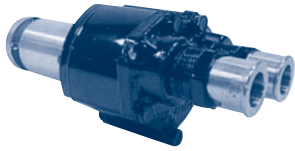


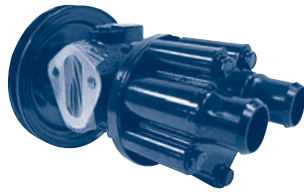
# MERCURISER ENGINE PUMPS

## MERCURISER (standard pump)



46-72774-A32

## MERCURISER (pump with fuel pump flange)



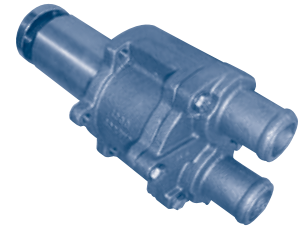
46-807151A-8

## MERCURISER (pump for serpentine belt)



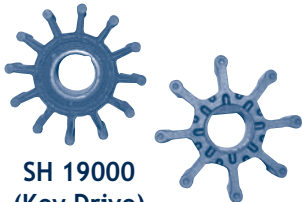
46-807151-A12

## JABSCO (all bronze replacement)



43210-0001

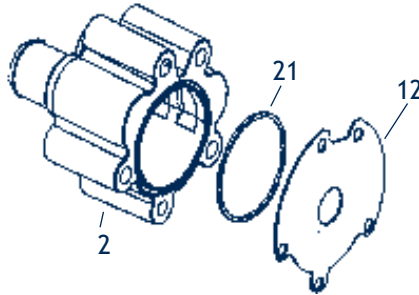
## REPLACEMENT IMPELLERS



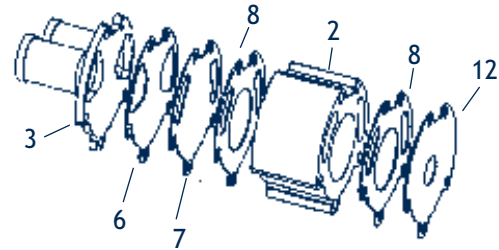
SH 19000  
(Key Drive)

47-59362  
(Flat Drive)

## New Style 2-Piece Body (46-807151-A14 includes 2-12)



## Old Style 2-Piece Body



ITEM NUMBER	PARTS FOR 46-72774-A32	PARTS FOR 46-807151A-9	DESCRIPTION
2	46-807151-A14	46-807151-A14	New Style Body Kit (Replaces items 2-12)
3	87631-A4	See Item 2	Cover
4	(5) 10-73275	(2) 10-807356 (3) 10-74822	Screw
5	12-20084	12-814806	Washer
6	27-94915	27-94915	Gasket
7	94916	94916	Wearplate
8	27-94914	27-94914	Gasket (2 required)
9	19-59504	19-59504	Plug
10	47-59362	47-59362	Impeller
11	28-56662	28-56662	Key
12	94576	94576	Wearplate
13	25-94288	25-94288	Quad Ring
14	46-94913A	49-94913A 5	Pump Housing
15	26-90562	26-90562	Oil Seal
16	30-72961	30-72961	Ball Bearing
17	59501-A1	59501-A1*	Shaft
18	53-23720	52-23720	Snap Ring
19	26-72785	26-72785	Oil Seal
20	47530 (Hub)	807731 (Pulley)	
21	25-33465	25-33465	Body O'Ring

\* Shaft requires knurling between bearings

## JABSCO 43210-0001 (see picture above) (Replaces 46-72774-A32)

Part #	Description	Qty
17954-0001	Impeller	1
92650-0120	Pipe Plug 1/8"	1
18753-0314	Screw/Washer	5
43208-1000	End Plate	1
43205-1000	Gasket	1
43175-1000	Drive Key, Impeller	1
43176-1000	Cam/Wearplate	1
18753-0328	Seal	1
92000-0540	O-ring	1
43209-1000	Body	1
92000-0120	Stinger (O-Ring)	1
18753-0318	Bearings	2
43207-1000	Shaft	1
18753-0345	Retaining Ring	2
91401-0100	Woodruff Key	1
18753-0323	Retaining Ring	1

CONTENTS

PUMPING PRINCIPLES

ENGINE COOLING

ENGINEERING TABLES

TROUBLE-SHOOTING GUIDE

INDEX

HOME

NEXT

BACK