

CONTENTS

PUMPING PRINCIPLES

ENGINE COOLING

ENGINEERING TABLES

TROUBLE-SHOOTING GUIDE

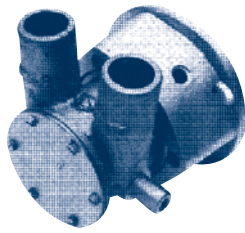
INDEX

HOME

NEXT

BACK

## JABSCO 350 - 454 Chevy Block



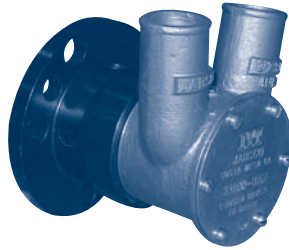
### 22740 Series

Volvo # 826456

Part #	Description	Qty
22120-0001	Impeller	1
92600-0330	Bearing	1
22317-1000	Brg Hsg & Shaft	1
11830-0000	Cover	1
22318-0000	Cam (1/2 Flow)	1
22308-0000	Cam (Full Flow)	1
3298-0000	Gasket	1
96080-0080	Mechanical Seal	1
92700-0060	Lip Seal (Option)	1
91003-0010	Cam Screw	1
91002-0010	Cover Screw	6
18707-0000	Snap Ring	1

\*Pump discontinued, use 50410 Series

## JABSCO 350 / 454 Chevy Block



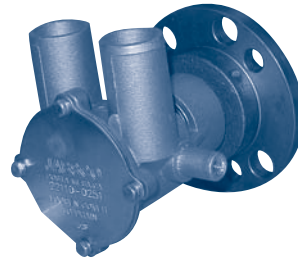
### 23800 Series

23800-0251 (350 Block)  
23800-0201 (454 Block)

Part #	Description	Qty
22120-0001	Impeller	1
91002-0010	Screw, End Cover	6
11830-0000	End Cover	1
3298-0000	Gasket, End Cover	1
91004-0100	Screw, Half Cam	1
91004-0110	Screw, Full Cam	1
22318-0000	Cam, Half (0251)	1
18753-0090	Cam, Full (0201)	1
92700-0060	Seal, Lip	1
3166-0000	Spacer, Seal	1
18753-0325	Shaft, Brg, Hsg.	1
18725-0000	Snap Ring	1

\*Pump discontinued, use 50410 Series

## JABSCO

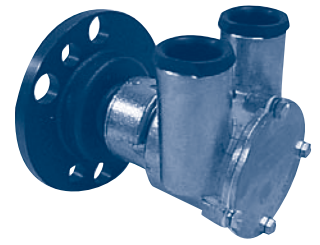


### 22110 / 22400

Part #	Description	Qty
22120-0001	Impeller	1
18753-0656	O-Ring	1
96080-0080	Mechanical Seal	1
92700-0060	Lip Seal	1
18753-0657	End Cover Screws	4
22114-0000	End Cover	1

\*Pump discontinued, use 50410 Series

## JABSCO



### 50410

Volvo # 3860703 (50410-1201)

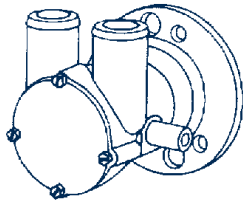
Part #	Description	Qty
18777-0001	Impeller	1
92000-1403	O-Ring	1
96080-0080	Mechanical Seal	1
92700-0060	Lip Seal	1
X3001-151F	End Cover Screws	4
X3081-081F	Washers	4
50416-0000	End Cover	1
22318-0100	Cam (Full)	1
X3003-149K	Cam Screw	1
22308-0000	Cam 1/2	1

### Volvo Pump Cross-Reference

Volvo Pump #	Depco Pump #
804959	JA 9400-0001
807368	Replaced by JS 10-35157-3*
820694	JA 10770 Series
822787	JS 10-21915-2 / JA 10770 Series
825916	JS 10-31917-1 / JA 9900-0001
826456	JA 22740 Series
828026	JS 10-32621-2
829895	Replaced by JS 10-35098-3*
831178	JS 10-32058-1
833415	Replaced by JS 10-35157-3*
833522	Replaced by JS 10-35157-3*
833883	Replaced by JS 10-35157-3*
836326	JS 10-22335-3
837370	JS 10-24017-3
837371	JS 10-24017-4
837915	JS 10-24017-4
837916	JS 10-24017-3
837917	JS 10-21915-2
837920	JS 10-21915-2
837922	JS 10-24017-4
837923	JS 10-24017-4
838314	JS 10-24061-4
838522	JS 10-24130-2
840557	JS 10-24178-2
841860	JS 10-24076-1 / JS 10-24228-1
842274	JS 10-22335-4
842275	JS 10-22335-4
842843	JS 10-24061-3
844971	JS 10-24130-3
846354	JA 10770 Series
846355	JA 10770 Series
846356	JA 10770 Series
855517	JS 10-32621-2
855578	JS 10-32621-3
856952	Replaced by JS 10-24228-1
857451	Replaced by JS 10-24228-1
858065	JS 10-35157-1
858150	JS 10-24268-4
858408	JS 10-24268-5
858469	JS 10-24277-3
858470	JS 10-24277-4
866739	JA 10770 Series
3829310	JA 10770 Series
3829311	JA 10770 Series
3852398	SH G9901
3852399	SH G9902
3855079	SH G9903

\* Requires (2) 01-43238 Clamps

## JOHNSON (Single BRG Version) 350 Chevy Block



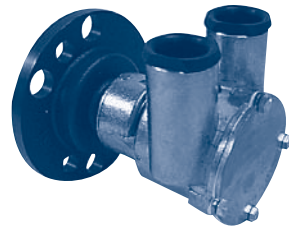
### 10-24076-1\*

Old Volvo # 841640

Part #	Description	Qty
1027B	Impeller	1
05-08-122	Ball Bearing	1
09-20-503	Mech. Seal	1
05-34-105	Ret. Ring	1
05-04-550	Screw (Cover)	4
05-04-174	Screw	1
01-45315	Gasket	1
01-45312-1	End Cover	1
01-42446	Washer	1
01-45329	Cam	1
01-45314	Shaft	1

\*Pump discontinued, use 1024228-1

## JOHNSON 350 Chevy Block



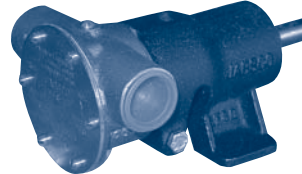
### (F5B-9)

### 10-24228-1

Volvo # 841640

Part #	Description	Qty
1027B	Impeller	1
01-45329	Cam	1
05-04-174	Cam Screw	1
01-45312-1	Cover	1
01-45315	Gasket	1
05-29-105	Seal	1
01-45680	Seal Washer	1
05-08-128	Ball Bearing	2
05-06-501	O-Ring	1
05-04-550	Screw	4
09-45807	Shaft/Bearing Carrier	1

## JABSCO AQ180 / MB36B



### 10550-200

Part #	Description	Qty
1210-0001	Impeller	1
3298-0000	Gasket	1
18753-0049	Seal	1
91002-0020	Cover Screws	6
490-0001	Cam	1
91003-0010	Cam Screws	1
92700-0060	Pump End Oil Seal	1
SP2601-39	Bearing	2
SP2701-15	Drive End Oil Seal	1
10417	Shaft	1
7883-0000	Wearplate	1
11830-0000	Cover	1