

VOLVO ENGINE PUMPS

CONTENTS

PUMPING PRINCIPLES

ENGINE COOLING

ENGINEERING TABLES

TROUBLE-SHOOTING GUIDE

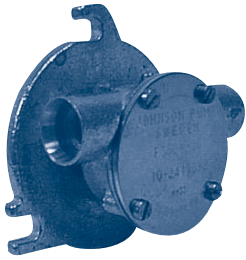
INDEX

HOME

NEXT

BACK

JOHNSON Kohler 5HP

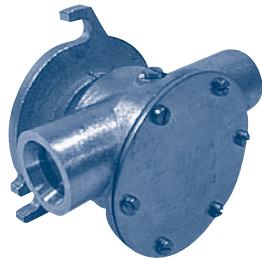


10-24178-2

Volvo # 840557

Part #	Description	Qty
808B	Impeller	1
01-45543	Shaft	1
01-42415	Cam	1
01-45087	Wearplate	1
01-42400	Pin	1
01-45542	Brg Spacer	1
01-43240	Gasket	1
05-04-642	Cover Screw	4
05-04-553	Cam Screw	1
05-01-120	Cam Screw Washer	1
05-29-139	Seal	2
05-06-513	O-Ring	1
05-08-130	Ball Bearing	2
05-34-131	Snap Ring	1
01-43239	Cover	1

JOHNSON Kohler 5HP



10-24268

Volvo # 858150 (10-24268-4)
Volvo # 858408 (10-24268-5)

Part #	Description	Qty
1027B	Impeller	1
05-29-105	Lip Seal	2
01-45181	Seal Spacer	1
01-42401	Gasket	1
01-42398	End Cover	1
05-04-642	Cover Screw	6
01-42397	Full Cam (10-22468-4)	1
05-04-117	Full Cam Screw	1
01-45014	1/2 Cam (10-24268-5)	1
05-04-175	1/2 Cam Screw	1
01-42399	Wearplate	1
01-42400	Wearplate Pin	1
05-06-501	O-Ring Slinger	1
05-34-130	Snap Ring	1
05-08-129	Ball Bearing	2
01-42537	Bearing Spacer	1
01-45821	Shaft	1
05-03-524	Drive Pin	1

JOHNSON

TAMD 31-41A and B / MD 31-31A
AQD 40-41A / AQD 40-41A



10-24061 / 10-24277

Volvo # 831178 / 838314 / 842843 (10-24061)
Volvo # 858469 / 858470 (10-24277)

Part #	Description	Qty
1028B	Impeller	1
01-42679	Full Cam	1
05-04-144	Cam Screw for above	1
01-42584	1/2 Cam	1
05-04-125	Cam Screw for above	1
01-45044	Shaft (24061)*	1
01-45844	Shaft (24277)*	1
01-42441	Cover	1
01-42445	Gasket	1
05-04-550	Cover Screw	6
05-29-105	Seal	2
05-06-501	O-Ring	1
05-08-128	Ball Bearing	2
05-34-130	Snap Ring	1
01-45181	Seal Spacer	1

*01-45044 shaft extends 11/16" out from flange and the 01-45844 shaft extends 1/2" out from flange.

JOHNSON TAMD 40A and B

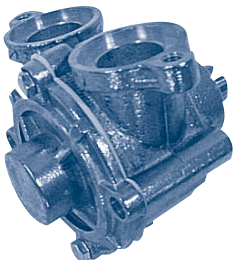


10-24130

Volvo # 838522

Part #	Description	Qty
819B	Impeller	1
01-45617	Seal Washer	1
05-04-178	Cover Screw	5
05-04-107	Cam Screw	1
05-29-510	Lip Seal	1
05-08-504	Ball Bearing	2
05-01-509	Bearing Spacer	1
05-34-118	Snap Ring	1
01-45354	Gasket	1
01-45316	Shaft	1
01-45634	Seal Spacer	1
01-42427-15	Slinger	1
01-42426	Pin	1
01-42423	Wearplate	1
01-45317	Cam	1
01-42422-1	Cover	1

JOHNSON AQ131 / AQ140A - 170

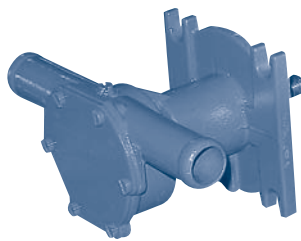


10-32621

Volvo # 855517 (10-32621-2)
Volvo # 855578 (10-32621-3)

Part #	Description	Qty
801B	Impeller	1
01-45021	Cover	1
01-45022	Shaft	1
01-42397	Cam (10-32621-2)	1
01-45014	Cam (10-32621-3)	1
01-45930	Gasket	1
01-45023	Bronze Bushing	2
01-42646	Key	1
05-29-105	Seal	1
05-04-117	Cam Screw (-2)	1
05-04-175	Cam Screw (-3)	1
05-04-49	Cover Screw	2

JOHNSON M02030 / 2040



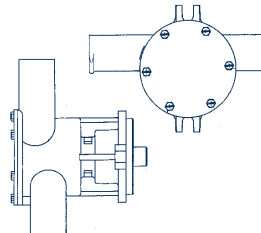
10-24465-1

Volvo # 3580945

Part #	Description	Qty
08-1026B	Impeller	1
01-45284	Gasket	1
05-29-139	Lip Seal	2
01-46491	Shaft	1
01-46496	Spacer	1
01-42389	Cam	1
01-45600	End Cover	1
01-45955	Washer	1
05-02-120	Washer	1
05-04-114	Screw	1
05-04-124	Screw	1
05-04-642	Screw	6
05-06-513	O-Ring	1
05-08-130	Ball Bearing	2
05-34-131	Retaining Ring	1
05-34-501	Retaining Ring	1

JOHNSON

TMD 31MK / TAMD 31/41/42
KAD 32/43/44 / KAMD 43/44

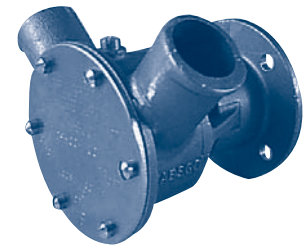


10-24394-1 / 10-24524-01

Volvo # 3581558 (10-24524-01)
Volvo # 860629 (10-24394-1)

Part #	Description	Qty
1028B	Impeller	1
01-42445	Gasket (10-24394)	1
05-06-596	O-Ring (10-24524)	1
05-29-105	Lip Seal	2
01-45181	Seal Spacer	1
01-42679	Cam (10-24394)	1
05-04-144	Cam Screw (10-24394)	1
05-34-21	Cam Screw Washer (10-24394)	1
05-04-550	Cover Screws	6
05-06-501	Slinger O-Ring	1
05-08-128	Ball Bearing	2
05-34-130	Snap Ring	1
01-45844	Shaft	1
01-46816	Wearplate (10-24524)	1
01-46242	End Cover (10-24394)	1
01-46648-1	End Cover (10-24524)	1

JABSCO MD 22



29500-1001

Also used on BMW, Aifo Iveco, CT Marine, Daimler Benz, Dolphin, Lancing, Nanni and others.

Part #	Description	Qty
1210-0001	Impeller	1
3298-0000	Gasket	1
SP2700-1027	Water Seal	1
91002-0020	Cover Screw	6
490-0001	Cam	1
91003-0010	Cam Screw	1
SP2700-1027	Oil Seal	1
SP2901-0451	Bearing	2
29508-0000	Shaft	1
7883-0000	Wearplate	1
11830-0000	Cover	1