

CONTENTS

PUMPING PRINCIPLES

ENGINE COOLING

ENGINEERING TABLES

TROUBLE-SHOOTING GUIDE

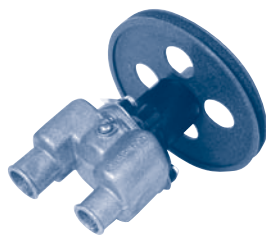
INDEX

HOME

NEXT

BACK

## SHERWOOD OMC 4 Cylinder



**G-9901**  
**6 1/2" Diameter Pulley**  
Volvo # 3852398

Part #	Description	Qty
9959K	Impeller	1
12859	Mechanical Seal	1
4264	Seal Spacer	1
12231	Cover O-Ring	1
12855	Gasket	1
12856	Wearplate	1
15883	Cam	1
10515C	Cam Screw	1
4432	Key	1
12211	Ball Bearing	2
5133	Bearing Spacer	1
4258	Snap Ring (SM)	3
4259	Snap Ring (LG)	2
12857	Cover Bolts	3
12710	Lock Washers	3
13363	Shaft	1
21154	Pulley	1

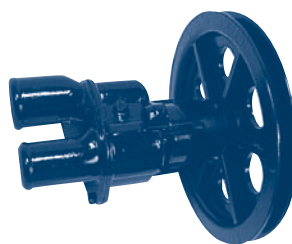
## SHERWOOD OMC 6 - 8 Cylinder



**G-9903 (Old # G-9902)**  
**4 1/2" Diameter Pulley**  
Volvo # 3855079 (G9903)  
Volvo # 3852399 (G9902)

Part #	Description	Qty
9959K	Impeller	1
12859	Mechanical Seal	1
4264	Seal Spacer	1
12231	Cover O-Ring	1
12855	Gasket	1
12856	Wearplate	1
15883	Cam	1
10515C	Cam Screw	1
4432	Key	1
12211	Ball Bearing	2
5133	Bearing Spacer	1
4258	Snap Ring (SM)	3
4259	Snap Ring (LG)	2
12857	Cover Bolts	3
12710	Lock Washers	3
13363	Shaft	1
21175	Pulley	1

## JOHNSON OMC 4, 6 and 8 Cylinder

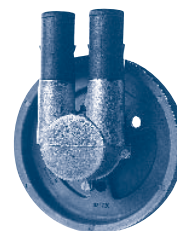


**With 4 1/2" or 6 1/2" Pulley**  
Volvo # 3851623-3 (6 1/2" Pulley)  
Volvo # 3857794 (4 1/2" Pulley)

Part #	Description	Qty
1027B	Impeller	1
DP 3851702-5	Gasket	1
05-04-174	Cam Screw	1
05-08-123	Ball Bearing	2
01-45329	Cam	1
05-29-105	Seal	2

Complete pump is discontinued.  
Replaced by: ..... G9901 (6 1/2" pulley)  
G9903 (4 1/2" pulley)

## JOHNSON 43 / 50 / 57 / 74 / 82 8.1L / 3.0L

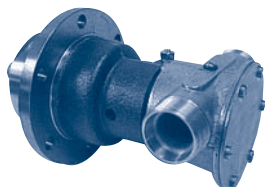


**10-13223/10-13236**  
10-13223 (Serpentine Belt)  
10-13236 (V-Belt)

Part #	Description	Qty
1027B	Impeller	1
05-06-597	O-Ring	1
05-29-105	Lip Seal	1
05-04-660	Screw	4
05-06-613	O-Ring	2
05-08-517	Ball Bearing	1

## JOHNSON

MD 70B & C / TAMD 70 / AQD 70C  
TMD 70B & C / MD 100B / TMD 100A



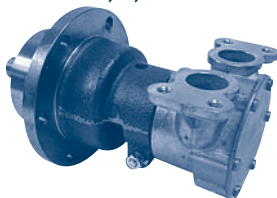
**10-24017**

Volvo # 837370 / 837916 (10-24017-3)  
Volvo # 837371 / 837915 (10-24017-4)  
Volvo # 837922 / 837923 (10-24017-4)

Part #	Description	Qty
1028B	Impeller	1
01-42445	Gasket	1
09-20-115	Mechanical Seal	1
05-34-105	Seal Snap Ring	1
05-08-118	Ball Bearing	2
05-34-118	Snap Ring	1
05-29-108	Bearing Seal	1
01-42402	Slinger	1
01-42441	End Cover	1
05-04-117	Cover Screws	6
01-42679	Full Cam (10-24017-3)	1
01-42442	2/3 Cam (10-24017-4)	1
05-04-144	Cam Screw	1
01-42443	Wearplate	1
01-42400	Wearplate Pin	1
01-31964	Shaft	1
05-04-105	Clamp Bolt	1
05-05-115	Clamp Nut	1
05-01-115	Clamp Washer	1

## JOHNSON

MD 30 & 30A / AQD 40DP  
THAMD 70, B, C / TIMD 96B



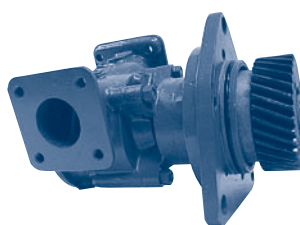
**10-22335**

Volvo # 836326 (10-22335-3)  
Volvo # 842274 / 842275 (10-22335-4)

Part #	Description	Qty
1028B	Impeller	1
01-42445	Gasket	1
09-20-115	Mechanical Seal	1
05-34-105	Seal Snap Ring	1
05-08-118	Ball Bearing	2
05-34-118	Snap Ring	1
05-29-108	Bearing Seal	1
01-42402	Slinger	1
01-42441	End Cover	1
05-04-117	Cover Screws	6
01-42679	Full Cam (10-22335-3)	1
01-42442	2/3 Cam (10-22335-4)	1
05-04-144	Cam Screw	1
01-42443	Wearplate	1
01-42400	Wearplate Pin	1
01-31964	Shaft	1
05-04-105	Clamp Bolt	1
05-05-115	Clamp Nut	1
05-01-115	Clamp Washer	1

## JOHNSON

MD 100, A, BK / TMD 100A  
TMD 120 / TAMD 120 & 120A



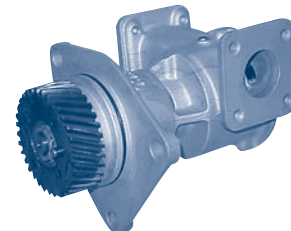
**10-21915-2**

Volvo # 8227871 / 837917 / 837920

Part #	Description	Qty
819B	Impeller	1
01-42424	Gasket	1
09-20-118	Mechanical Seal	1
05-34-108	Seal Snap Ring	1
05-08-118	Ball Bearing	2
05-34-118	Snap Ring	1
05-29-108	Bearing Seal	1
01-42427-15	Slinger	1
01-42422-1	End Cover	1
05-04-46	Cover Screws	5
01-42425	Cam	1
05-04-108	Cam Screw	1
01-42423	Wearplate	1
01-42426	Wearplate Pin	1
01-32020	Shaft	1
05-04-128	Body Bolts	1

## JABSCO

MD 71, TMD 71, TAMD 61 and 71



**10770 Series**

Volvo # 822787 / 820694 / 846354  
846355 / 846356 / 866739  
3829310 / 3829311

Part #	Description	Qty
17935-0001	Impeller	1
816-0000	Gasket	1
6408-0000	Mechanical Seal	1
92600-0260	Ball Bearing	2
SP2701-54	Bearing Seal	1
3181-0000	Slinger	1
12062-0000	End Cover	1
91005-0040	Cover Screws	5
834-0001	Cam	1
91005-0040	Cam Screw	1
2574-0000	Wearplate	1
11256	Shaft	1
18725-0000	Snap Ring	1