

CONTENTS

PUMPING PRINCIPLES

ENGINE COOLING

ENGINEERING TABLES

TROUBLE-SHOOTING GUIDE

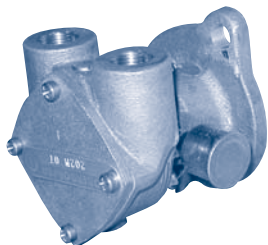
INDEX

HOME

NEXT

BACK

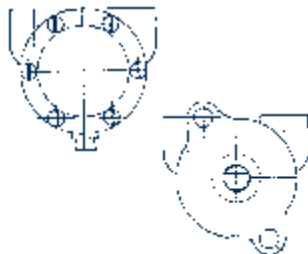
OBERDORFER 2 Bolt Mount



202M-3, 202M-7

Part #	Description	Qty
6593	Impeller	1
5385	Cover Screw	4
6597	Cover	1
6599	Gasket	1
5373	Snap Ring	1
6598	Shaft	1
6891	Half Cam (202M-3)	1
6592	Full Cam (202M-7)	1
7300-71	Screw (Cam)	1
5463	Seal	2
6600	Plug	1
5910	Grease Cup	1
10725	Kit	1
WB 300253	Mtg Gasket	1

SHERWOOD 2 Bolt Mount

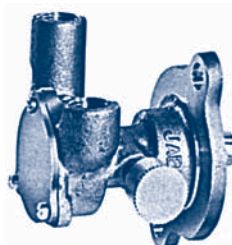


H-80
Universal # 299805

Part #	Description	Qty
10077K	Impeller	1
11873	Shaft	1
10514c	Seal	2
11519	Bushing	1
336	Plug	1
10286	Gasket	1
10593	Cover	1
344	Screw	6
12863	Retaining Ring	1
15042	Cam	1
10822	Cam Screw	1
10093	Key	1
WB 300253	Mtg Gasket	1

Complete Pump Discontinued,
replaced by 202M-7

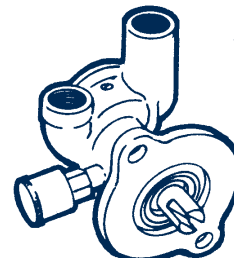
JABSCO 2 Bolt Mount



17120-0001

Part #	Description	Qty
4528-0001	Impeller	1
91002-0090	Screw (End Cover)	3
11833-0000	End Cover	1
9156-0010	Gasket	1
91009-0050	Screw (Impeller)	1
4538-0000	Cam	1
91002-0090	Screw (Cam)	1
91501-0020	Grease Cup	1
92700-0060	Lip Seal	2
17127-0000	Shaft	1
90178-0001	Service Kit	1
WB 300253	Mtg Gasket	1

SHERWOOD 2 Bolt Mount



T11165

Part #	Description	Qty
9979	Impeller	1
10514c	Seal	2
10991	Shaft	1
9977	Gasket	1
9976	Cover	1
WB 300253	Mtg Gasket	1

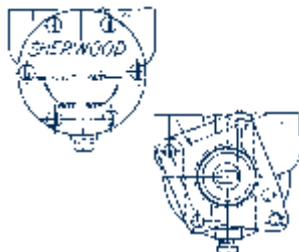
SHERWOOD Clamp Mount



G-903 / G-908

Part #	Description	Qty
9000K	Impeller	1
22796	Shaft (G-908)	1
18566	Shaft (G-903)	1
13315	Slinger	1
4258	Snap Ring (SM)	3
4259	Snap Ring (LG)	1
17485	Screw	3
12710	Lock Washer	3
10195	Cam Screw	1
18663	Cam	1
18576	Key	1
4264	Washer for Seal	1
12231	O-Ring	1
12856	Wearplate	1
12855	Gasket	1
12211	Ball Bearing	2
18806	Lip Seal	1
12859	Mech. Seal	1

SHERWOOD 4 Bolt Mount

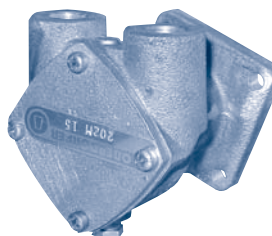


M-5
Universal # 300986

Part #	Description	Qty
10077K	Impeller	1
13833	Shaft	1
10514c	Seal	2
11519	Bushing	1
336	Drain Plug	1
10286	Gasket	1
10593	Cover	1
344	Cover Screw	6
12863	Retaining Ring	1
10093	Key	1
10285	Cam	1
10822	Cam Screw	1
WB 298485	Mtg Gasket	1

Complete Pump Discontinued,
replaced by 202M-15

OBERDORFER 4 Bolt Mount



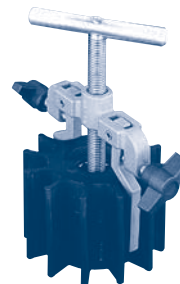
202M-15 / 202M-16

Universal #301357 (202M-15) - 3/8" Ports
Phasor (202M-16) - 1/2" Ports

Part #	Description	Qty
6593	Impeller	1
6597	Cover	1
6592	Cam	1
7300-71	Cam (Screw)	1
8767	Shaft	1
6599	Gasket	1
5091	Carbon Brg.	1
5463	Lip Seal	2
5373	Snap Ring	1
5385	Screws (Cover)	4
11691	Kit	1
WB 298485	Mtg Gasket	1

202M-16 used on Phasor generators only!

REPLACEMENT IMPELLERS



Universal and Westerbeke

Impeller Cross Reference		
Manufacturer Part #	Depco Part #	
11418	SH 9959K	
11764	SH 10077K	
11907	SH 9959K	
13930	SH 10615K	
18184	JA 5616-0001	
32620	JS 808B	
33100	SH 10077K	
33104	SH 9959K	
34440	JS 810B	
287439	SH 10077K	
295628	OB 659K	
302571	JS 1027B	
302875	SH 9000K	

Impeller Puller page 149