

CONTENTS

PUMPING PRINCIPLES

ENGINE COOLING

ENGINEERING TABLES

TROUBLE-SHOOTING GUIDE

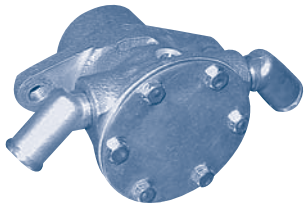
INDEX

HOME

NEXT

BACK

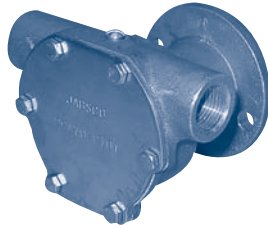
YANMAR 2GM-20 Series



128270-42000

Part No.	Description	Qty
104211-42070	Impeller	1
104211-42090	Gasket	1
104211-42100	Seal	1
128270-42000	Pump Assy.	1
104211-42050	Cam	1
124070-42060	Shaft, Impeller	1
104211-42060	Cover	1
104211-42110	Snap Ring	1
104211-42120	Retainer	1
104211-42130	Spacer	1
22252-00030	Snap Ring	1
24107-062004	Ball Bearing	2
26554-04062	Screw	1
26554-04062	Screw	6

JABSCO MP 5.5M / MP 8M

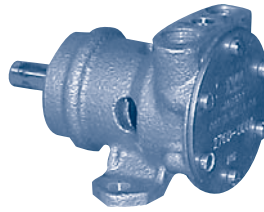


29470-2701

Yanmar

Part No.	Description	Qty
18653-0001	Impeller Finished	1
29476-0000	Gasket	1
SP2701-1006	Seal Lip	2
SP1701-4438	Retaining Ring	1
91002-0010	Screw	6
X4020-210A	O-Ring	1
29475-0000	End Cover Brass	1
18729-0000	Retaining Ring	1
29477-0050	Shaft	1
SP2601-0457	Bearing	2
2907-0000	Cam Brass	1
91002-0090	Screw	1

JABSCO

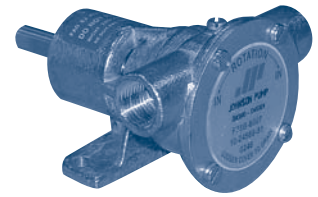


2760 Series

Yanmar

Part No.	Description	Qty
4528-0001	Impeller - Neoprene	1
90023-0001	Kit (Imp/Seal/Gasket)	1
91002-0010	End Cover Screw	6
12066-0000	End Cover	1
1189-0000	Gasket	1
91009-0050	Impeller Screw	1
4271-0000	Wearplate & Cam Assy	1
91002-0030	Cam Screw	1
6342-0000	Slinger	1
1041-0000	Inner Bearing Seal	1
92600-0080	Ball Bearing	1
18717-0000	Retaining Ring (Bearing to Body)	1
1039-0000	Outer Bearing Seal	1
92700-0110	Seal	1
92000-0560	O-ring	1
1053-0000	Shaft	1

JOHNSON

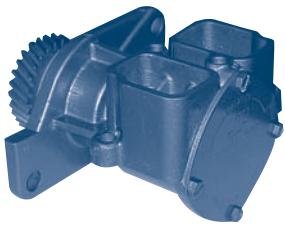


10-24569-51

Westerbeke # 46120

Part No.	Description	Qty
808B	Impeller	1
05-06-618	O-Ring	1
09-20-542	Mechanical Seal	1
01-46735-1	Shaft	1
01-46739-2	End Cover	1
01-42910	Cam	1
01-45542	Spacer	1
01-42400	Pin	1
01-46676	Wearplate	1
01-45049	Plate	1
04-45659	Washer	1
01-46790-01	Washer	1
05-04-642	Screw	4
05-04-107	Cam Screw	1
05-06-513	O-Ring	1
05-08-130	Ball Bearing	2
05-34-131	Int. Snap Ring	1
05-34-501	Ext. Snap Ring	2

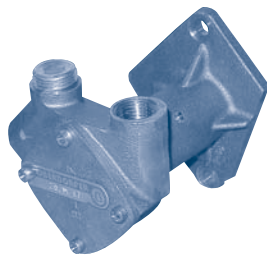
YANMAR



119773-42500 / 42650

Part #	Description	Qty
YM X08812	Impeller	1
YM X0506590	Cover O-Ring	1
YM X0529105	Lip Seal	2
YM X0145181	Seal Washer	1
YM X046535	Cover	1
YM X01462682	Shaft	1
YM X0146502	Cam	1
YM X0504174	Cam Screw	1
YM X0504550-01	Cover Screw	4
YM X0506501	Slinger O-Ring	1
YM X0508511	Ball Bearing	2
YM X0534107	Snap Ring (SM)	1
YM X0534507	Snap Ring (LG)	1
YM 119787-42570	Port Gasket	1

OBERDORFER

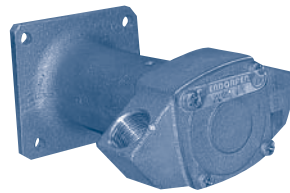


202M-17

Phasor

Part No.	Description	Qty
5385	Cover Screw	4
8870	Shaft	1
5847	Ball Bearings	2
8868	Bearing Seals	2
5373	Snap Ring	1
7557	Snap Ring	1
7639	Snap Ring	1
8927	Washer	1
8874	Slinger	1
32592	Seal Assy	1

OBERDORFER

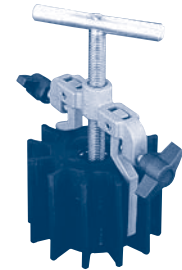


302M-3

Phasor

Part No.	Description	Qty
6620	Impeller	1
8231	O-Ring	1
32886	Seal Assy	1
5382	Retaining Ring	1
5504	Screw	4
5925	Retaining Ring	1
5926	Retaining Ring	2
5928	Ball Bearing	2
6609	Lip Seal	2
6736	Cover	1
6739	Key	1
9963	Shaft	1

REPLACEMENT IMPELLERS



Westerbeke and Universal

Impeller Cross Reference

Manufacturer Part #	Depco Part #
11418	SH 9959K
11764	SH 10077K
11907	SH 9959K
13930	SH 10615K
18184	JA 5616-0001
32620	JS 808B
33100	SH 10077K
33104	SH 9959K
34440	JS 810B
287439	SH 10077K
295628	OB 6593
302571	JS 1027B
302875	SH 9000K

Impeller Puller page 149