

# NORTHERN LIGHTS (ALASKA DIESEL)

CONTENTS

PUMPING PRINCIPLES

ENGINE COOLING

ENGINEERING TABLES

TROUBLE-SHOOTING GUIDE

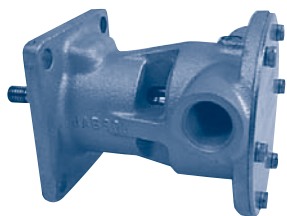
INDEX

HOME

NEXT

BACK

## JABSCO

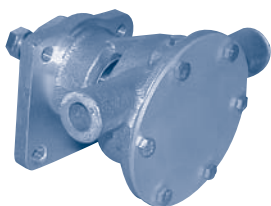


### 30410-9001

Northern Lights # 25-12057

Part #	Description	Qty
1210-0001	Impeller	1
96080-0080	Mechanical Seal	1
11836-0000	End Cover	1
18753-0133	Cover O-Ring	1
7884-0000	Cam/wearplate	1
92600-0120	Ball Bearings	2
92700-0060	Bearing Seal	1
3286-0000	Slinger	1
OB 5925	Snap Ring (LG)	1
OB 5926	Snap Ring (SM)	1
30414-0000	Shaft	1
18753-0134	Screw Kit	1

## JABSCO

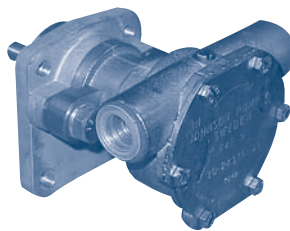


### 30415-7001

Northern Lights # 25-12007

Part #	Description	Qty
18673-0001	Impeller	1
96080-0080	Mechanical Seal	1
18753-0125	O-Ring	1
92601-0474	Ball Bearing	2
18753-0630	Bearing Seal	1
18753-0628	Snap Ring	1
30417-0000	Shaft	1
30418-0000	End Cover	1
30424-0000	Cam	1

## JOHNSON



### 10-24335-1

Northern Lights # 25-18305

Part #	Description	Qty
810B	Impeller	1
05-29-139	Lip Seal	2
01-45955	Seal Spacer	1
01-45284	Gasket	1
01-45282	End Cover	1
05-04-642	Cover Screw	6
05-08-503	Ball Bearing	2
05-34-501	Snap Ring	1
01-42389	Cam	1
05-04-114	Cam Screw	1
05-01-120	Screw Washer	1
01-46046	Shaft	1
05-05-117	Shaft Nut	1
05-01-122	Shaft Washer	1
05-06-521	Mounting O-Ring	1

## JABSCO

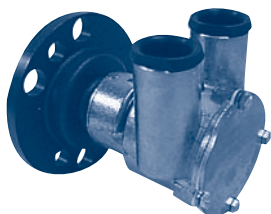


### 7420-0004

Northern Lights # 25-14801

Part #	Description	Qty
17935-0001	Impeller	1
816-0000	Gasket	1
6408-0000	Mechanical Seal	1
834-0000	Cam	1
91005-0040	Cam Screw	1
2574-0000	Wearplate	1
12062-0000	End Cover	1
91005-0040	Cover Screws	5
92600-0040	Ball Bearing	1
817-0000	Inner Bearing Seal	1
818-0000	Outer Bearings Seal	2
18711-0000	Snap Ring (SM)	1
18712-0000	Snap Ring (LG)	1
3181-0000	Slinger	1
824-0000	Shaft	1

## JOHNSON

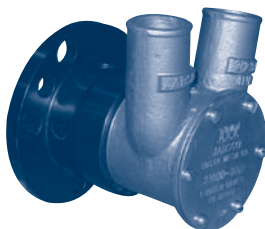


### 10-24232-1 (F6B-9)

Northern Lights # 25-11030

Part #	Description	Qty
812B	Impeller	1
01-45670	Cam (10-24232-1)	1
05-04-174	Screw for Above	1
01-45687	Cam (10-24232-2)	1
05-04-175	Screw for Above	1
01-45312-1	Cover	1
01-45315	Gasket	1
05-29-515	Lip Seal	1
01-45680	Seal Washer	1
05-04-550	Cover Screw	4
05-06-501	O-Ring	1
05-08-128	Ball Bearing	2

## JABSCO

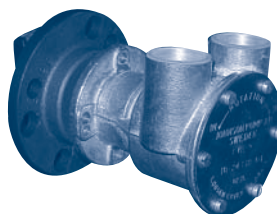


### 23800-0301

Northern Lights # 25-110471

Part #	Description	Qty
22120-0001	Impeller	1
91002-0010	Screw, End Cover	6
11830-0000	End Cover	1
3298-0000	Gasket, End Cover	1
91004-0100	Screw, Half Cam	1
91004-0110	Screw, Full Cam	1
22308-0000	Cam, Half (0251)	1
18753-0090	Cam, Full (0201)	1
96080-0080	Seal, Lip	1
3166-0000	Spacer, Seal	1
18753-0325	Shaft, Brg, Hsg.	1

## JOHNSON

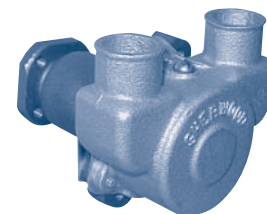


### 10-24338-01

Northern Lights # 25-11624

Part #	Description	Qty
01-1028B	Impeller	1
01-42445	Gasket	1
05-29-105	Lip Seal	2
01-42441	End Cover	1
01-42679	Cam	1
01-46469	Shaft	1
05-04-174	Screw	6
05-06-501	O-Ring	1
05-08-128	Ball Bearing	2
05-34-130	Retaining Ring	1
05-04-107	Screw	1
01-45181	Washer	1

## SHERWOOD 6.2 Diesel



### G-56

North American Diesel

Part #	Description	Qty
10615K	Impeller	1
12859	Mechanical Seal	1
4264	Seal Spacer	1
12231	Cover O-Ring	1
12855	Gasket	1
12856	Wearplate	1
10944	Cam	1
10515C	Cam Screw	1
4432	Key	1
12211	Ball Bearing	2
5133	Bearing Spacer	1
4258	Snap Ring (SM)	3
4259	Snap Ring (LG)	2
12857	Cover Bolts	3
12710	Lock Washers	3
12596	Shaft	1
10769	Hub	1
9420	Hub Pin	1