

EXPLODED VIEW & PARTS LISTING

Air Operated Double Diaphragm Pump

Model: NDP-32BAN

Part # 854575



To Purchase:

☎ 800-990-7867

✉ sales@yamadapump.com

📍 Find My Rep

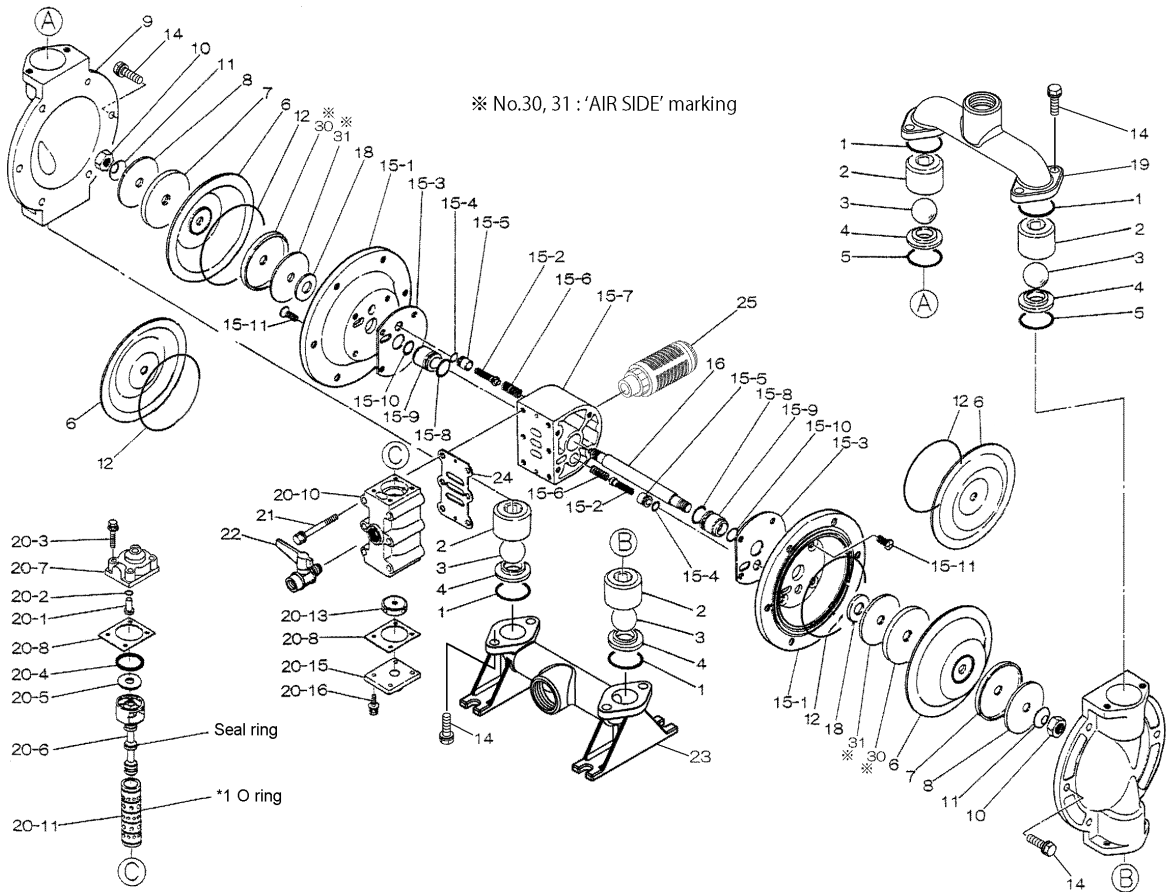
More Information:

▶ YouTube: @yamadapump

🌐 yamadapump.com

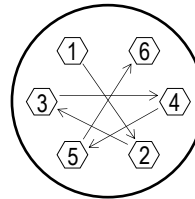
Data Sheets | CAD Drawings | Manuals
Literature | BOM | Performance Curves

Trial Program



Air Operated Double Diaphragm Pump

| REF.NO. | PART NO. | DESCRIPTION | QTY | REORDER |
|-----------|----------|------------------------|-----|---------|
| 1 | 640044 | O RING 46MM X 3.5MM B | 4 | |
| 2 | 711702 | BALL GUIDE 25AL | 4 | |
| 3 | 770581 | BALL 25N -35MM BUNA | 4 | |
| 4 | 590087 | VALVE SEAT 25AL/FC | 4 | |
| 5 | 640134 | O RING 44.5MM X 3MM | 2 | |
| 6 | 772962 | DIAPHRAGM (NBR) 25 | 2 | |
| 7 | 709151 | CENTER DISK 25R | 2 | |
| 8 | 709150 | WASHER 25R | 2 | |
| 9 | 711687 | OUT CHAMBER 25AL | 2 | |
| 10 | 682263 | NUT SS M14 X 1.5 | 2 | |
| 11 | 682730 | CONED DISK SPRING M14 | 2 | |
| 14 | 611177 | BOLT | 20 | |
| 14 | 631917 | WAVE WASHER | 20 | |
| 15 | 804665 | BODY ASSY | 1 | |
| 15-1 | 715939 | AIR CHAMBER | 2 | |
| 15-2 | 802360 | PILOT VALVE ASSY 20/25 | 2 | |
| 15-3 | 771057 | GASKET 20/25 | 2 | |
| 15-4 | 640009 | O RING 11MM X 2.5MM B | 2 | |
| 15-5 | 771945 | PILOT VALVE SEAT 20/25 | 2 | |
| 15-6 | 708666 | SPRING 20/25 | 2 | |
| 15-7 | 709812 | BODY 20/25 | 1 | |
| 15-8 | 685276 | O RING 23.3MM X 2.4MM | 2 | |
| 15-9 | 772703 | THROAT BEARING 20/25 N | 2 | |
| 15-10 | 685414 | V-PACKING 20/25 | 2 | |
| 15-11 | 682486 | BOLT FLAT HD W/ WASHE | 8 | |
| 16 | 709162 | CENTER ROD 25 | 1 | |
| 18 | 771054 | CUSHION 20/25 | 2 | |
| 19 | 716373 | OUT MANIFOLD | 1 | |
| 20 | 802362 | VALVE ASSY | 1 | |
| 20-1 | 709161 | RESET BUTTON 20/25 | 1 | |
| 20-2 | 640005 | O RING 7.5MM X 2.0MM | 1 | |
| 20-3 | 682704 | BOLT M6 FT ZINC W/ WAS | 4 | |
| 20-4 | 771241 | PACKING 20/25 | 1 | |
| 20-5 | 715961 | WASHER | 1 | |
| 20-6 | 802400 | C SPOOL ASSY | 1 | |
| 20-6-seal | 771053 | SEAL RING | 5 | |
| 20-7 | 710221 | CAP A 20/25 METAL | 1 | |
| 20-8 | 771240 | GASKET 20/25 | 2 | |
| 20-10 | 711639 | VALVE BODY 20/25 METAL | 1 | |
| 20-11 | 803931 | SLEEVE ASSY | 1 | |
| 20-11-*1 | 771080 | O-RING | 6 | |
| 20-13 | 771914 | CUSHION 20/25 | 1 | |
| 20-15 | 709305 | CAP B 20/25 METAL | 1 | |
| 20-16 | 682262 | BOLT M6 FT ZINC W/ WAS | 4 | |
| 21 | 682265 | BOLT M8 PT ZINC W/ WAS | 6 | |
| 22 | 684320 | BALL VALVE 25&25F 3/8 | 1 | |
| 23 | 716374 | IN MANIFULD | 1 | |
| 24 | 771056 | GASKET 20/25 | 1 | |
| 25 | 804697 | MUFFLER 20/25PP NEW | 1 | |
| 30 | 716258 | CENTER DISK | 2 | |
| 31 | 716259 | WASHER | 2 | |
| KIT | K32-MN | LIQUID END KIT | | |
| KIT | K32-AM | AIR MOTOR KIT | | |



Tightening torque for center rod and out chambers.

Center Rod 29 ft-lbf {40 N-m}
Out Chambers 8 ft-lbf {10 N-m}

Tightening torque for manifold retainer bolts.
32BAN 8 ft-lbf {10 N-m}

General Tools:

- Socket wrenches - 10mm, 12mm, 13mm, 17mm, 22mm
- Hexagonal box wrench - 5mm
- Open-end wrenches - 22mm

Miscellaneous:

- Assembly Oil - turbine oil none additional class 1 (equivalent to ISO VGA32 grade)
- Nuts - M14 x 1.5
- Urea grease grade (NLGI) No. 2
- Lubricants equivalent to Loctite anti-seize 767

Customer Notes

Model #: _____
Description: _____
Serial #: _____
Date Installed: _____
Department Location: _____
Tag/Project: _____