

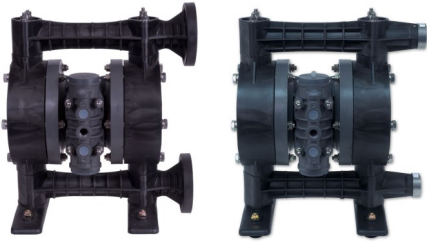
# EXPLODED VIEW & PARTS LISTING

## Air Operated Double Diaphragm Pump

Model: NDP-25BV[x]-PN

Kynar Series

(rubber fitted w/non-metallic center body)



### To Purchase:

☎ 800-990-7867

✉ sales@yamadapump.com

📍 Find My Rep

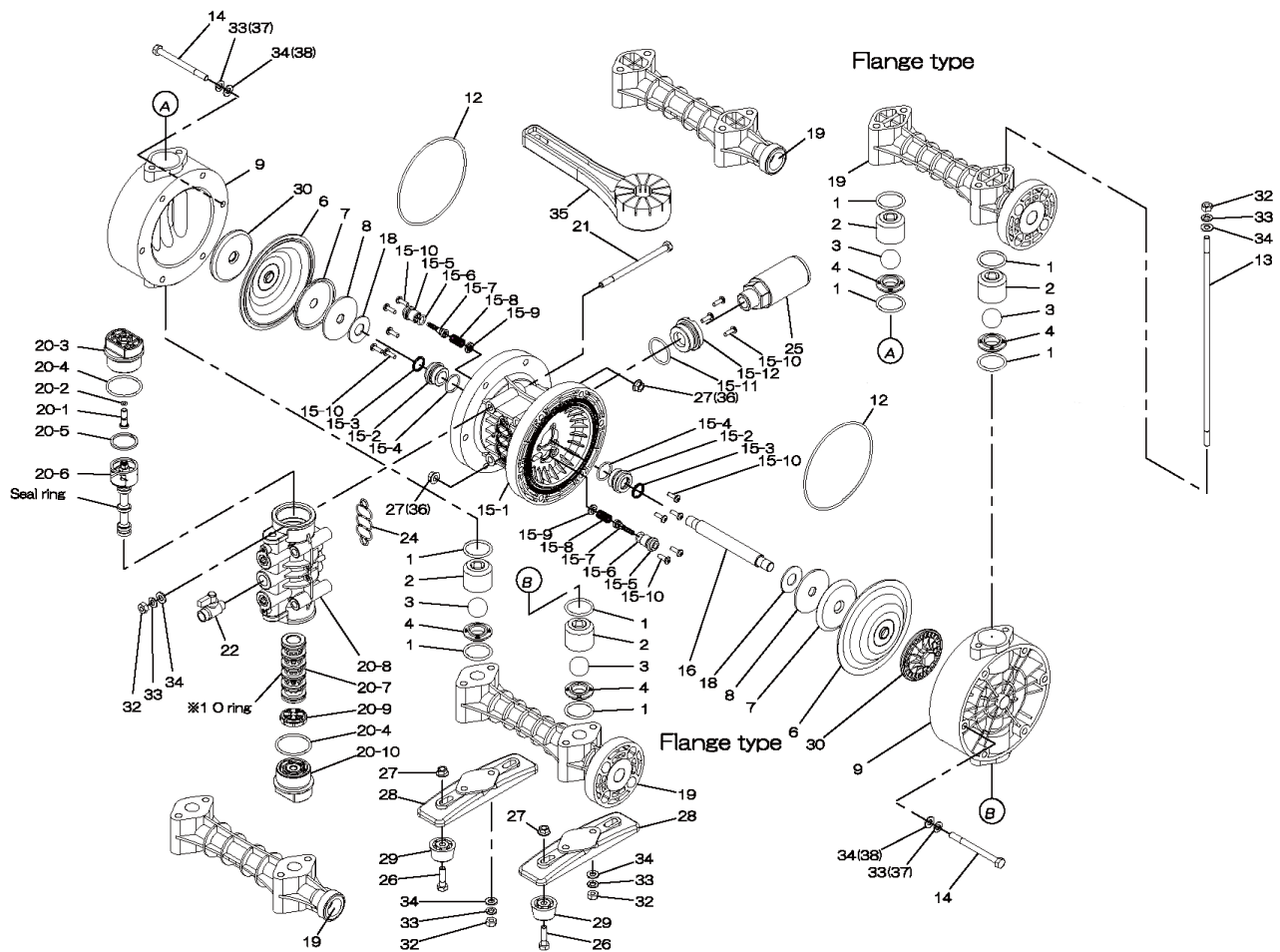
### More Information:

▶ YouTube: @yamadapump

🌐 yamadapump.com

Data Sheets | CAD Drawings | Manuals Literature | BOM | Performance Curves

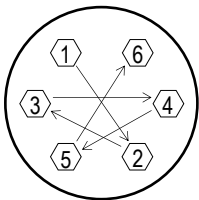
### Trial Program



	NDP-25BVE-PN	NDP-25BVH-PN	NDP-25BVS-PN	NDP-25BVV-PN			
REF.NO.	PART NO.	PART NO.	PART NO.	PART NO.	DESCRIPTION	QTY	REORDER
NPT	854956	854959	854960	854957			
Flange	854966	854969	854970	854967			
1	684119	643042	643042	642042	O-RING	8	
2	773419	773419	773419	773419	BALL GUIDE	4	
3	770590	773127	773171	770599	BALL	4	
4	780317	780317	780317	780317	BALL SEAT	4	
5	-	643041	643041	-	O-RING	4	
6	772963	771363	771974	772964	DIAPHRAGM 25	2	
7	716258	716258	716258	716258	CENTER DISK	2	
8	716259	716259	716259	716259	WASHER	2	
9	780312	780312	780312	780312	OUT CHAMBER 25PVDF	2	
12	-	640154	640154	-	O-RING	2	
13	710207	710207	710207	710207	TIE ROD 25PP	4	
14	683541	683541	683541	683541	BOLT	12	
<b>15</b>	<b>804604</b>	<b>804604</b>	<b>804604</b>	<b>804604</b>	<b>BODY ASSY</b>	<b>1</b>	
15-1	772929	772929	772929	772929	BODY 25-PP	1	
15-2	772931	772931	772931	772931	THROAT BERING	2	
15-3	685414	685414	685414	685414	V-PACKING	2	
15-4	685276	685276	685276	685276	O-RING	2	
15-5	772932	772932	772932	772932	VALVE SEAT	2	
15-6	640009	640009	640009	640009	O-RING	2	
15-7	802360	802360	802360	802360	PILOT VALVE ASSY	2	
15-8	708666	708666	708666	708666	SPRING	2	
15-9	772948	772948	772948	772948	SPRING SEAT	2	
15-10	686030	686030	686030	686030	TAPPING SCREW	13	
15-11	640132	640132	640132	640132	O-RING	1	
15-12	772933	772933	772933	772933	BUSHING	1	
16	710271	710271	710271	710271	CENTER ROD	1	
18	771054	771054	771054	771054	CUSHION	2	
19	780314	780314	780314	780314	MANIFOLD 25PVDF-NPT	2	
19	780316	780316	780316	780316	MANIFOLD 25PVDF-FLANGE		
<b>20</b>	<b>804608</b>	<b>804608</b>	<b>804608</b>	<b>804608</b>	<b>VALVE BODY ASSY</b>	<b>1</b>	
20-1	772991	772991	772991	772991	RESET BUTTON	1	
20-2	640002	640002	640002	640002	O-RING	1	
20-3	772946	772946	772946	772946	CAP A	1	
20-4	640043	640043	640043	640043	O-RING	2	
20-5	771241	771241	771241	771241	PACKING	1	
20-6	802400	802400	802400	802400	C SPOOL ASSY	1	
20-6-seal	771053	771053	771053	771053	SEAL RING	5	
20-7	804609	804609	804609	804609	SLEEVE ASSY	1	
20-7-*1	686029	686029	686029	686029	O-RING	6	
20-8	832903	832903	832903	832903	VALVE BODY	1	
20-9	771914	771914	771914	771914	CUSHION	1	
20-10	772947	772947	772947	772947	CAP B	1	

Air Operated Double Diaphragm Pump

	NDP-25BVE-PN	NDP-25BVH-PN	NDP-25BVS-PN	NDP-25BVV-PN			
NPT	854956	854959	854960	854957			
Flange	854966	854969	854970	854967			
REF.NO.	PART NO.	PART NO.	PART NO.	PART NO.	DESCRIPTION	QTY	REORDER
21	686031	686031	686031	686031	BOLT	4	
22	684320	684320	684320	684320	BALL VALVE	1	
24	772848	772848	772848	772848	GASKET	1	
25	804697	804697	804697	804697	MUFFLER	1	
26	621153	621153	621153	621153	BOLT	4	
27	686032	686032	686032	686032	NUT W/FLANGE	4	
28	771749	771749	771749	771749	BASE 25V	2	
29	770551	770551	770551	770551	FOOT RUBBER	4	
30	780318	780318	780318	780318	CENTER DISK	2	
32	683635	683635	683635	683635	NUT	12	
33	681300	681300	681300	681300	SPRING WASHER	12	
34	631329	631329	631329	631329	WASHER FLAT	12	
35	771244	771244	771244	771244	TOOL	2	
36	686033	686033	686033	686033	NUT W/FLANGE	12	
37	680257	680257	680257	680257	SPRING WASHER	12	
38	631330	631330	631330	631330	WASHER FLAT	12	
KIT	K25-VE-PP	K25-VH-PP	K25-VS-PP	K25-VV-PP	LIQUID END KIT		
KIT	K225-AP				AIR MOTOR KIT		



**Tightening torque for center rod and out chambers.**

- Center Rod 29 ft-lbf {40 N-m}
- Out Chambers NDP-25BVE/V-PN 8 ft-lbf {10 N-m}
- Out Chambers NDP-25BVH/S-PN 15 ft-lbf {20 N-m}

**Tightening torque for manifold retainer nuts.**

- BPE/V-PP 8 ft-lbf {10 N-m}
- BPH/S-PP 9 ft-lbf [12 N-m]

**General Tools:**

- Socket wrenches - 10mm, 12mm, 13mm, 17mm, 22mm
- Hexagonal box wrench - 5mm
- Open-end wrenches - 12mm, 13mm, 22mm
- Adjustable angle wrenches
- Phillips head screw driver

**Special Tools:**

- Accessory tool (2) 771244 (included) to remove the center disk.
- Sleeve remover 713148 (sold separately) used for removing the sleeve.

**Miscellaneous:**

- Assembly Oil - turbine oil none additional class 1 (equivalent to ISO VG32 grade)
- Nuts - M14 x 1.5
- Urea grease grade (NLGI) No. 2

**Customer Notes**

Model #: \_\_\_\_\_  
 Description: \_\_\_\_\_  
 Serial #: \_\_\_\_\_  
 Date Installed: \_\_\_\_\_  
 Department Location: \_\_\_\_\_  
 Tag/Project: \_\_\_\_\_