

EXPLODED VIEW & PARTS LISTING

Air Operated Double Diaphragm Pump

Model: NDP-25-PP
Polypropylene Series



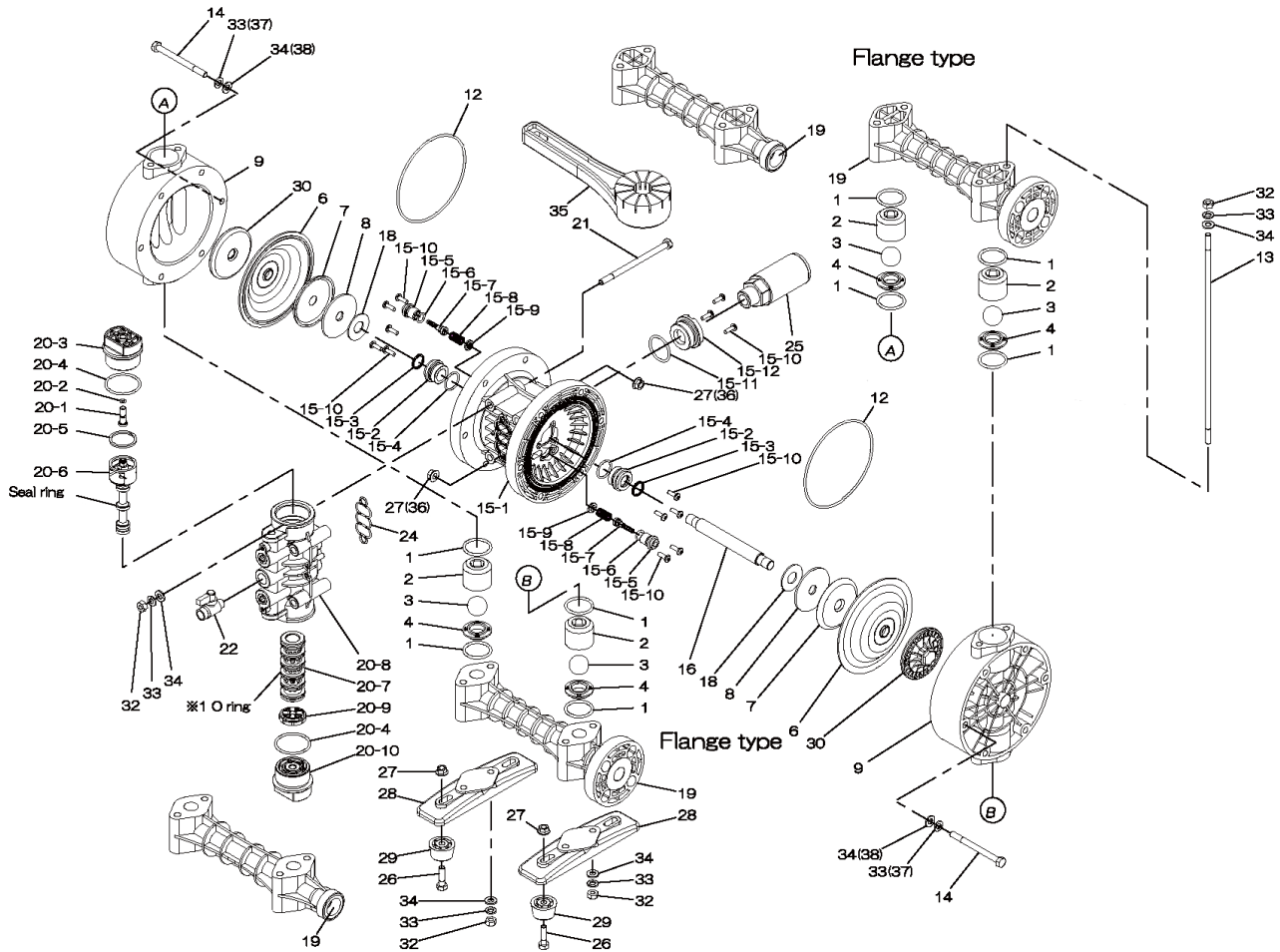
To Purchase:

- ☎ 800-990-7867
- ✉ sales@yamadapump.com
- 📍 Find My Rep

More Information:

- ▶ YouTube: @yamadapump
- 🌐 yamadapump.com
- Data Sheets | CAD Drawings | Manuals Literature | BOM | Performance Curves

Trial Program



Air Operated Double Diaphragm Pump

NDP-25BPC-PP NDP-25BPN-PP NDP-25BPE-PP NDP-25BPH-PP NDP-25BPS-PP NDP-25BPV-PP									
NPT	854171	854172	854173	854176	854177	854174	** NPT PUMPS **		
Flange	854185	854186	854187	854190	854191	854188	** FLG PUMPS **		
REF. No.	PARTS No.	PARTS No.	PARTS No.	PARTS No.	PARTS No.	PARTS No.	DESCRIPTION	QTY.	REORDER
1	640042	640042	684119	640042	684119	642042	O-RING	8	
2	771231	771231	771231	771231	771231	771231	BALL GUIDE	4	
3	770556	770581	770590	773127	773171	770599	BALL	4	
4	780138	780138	780138	780138	780138	780138	VALVE SEAT	4	
6	772961	772962	772963	771363	771974	772964	DIAPHRAGM	2	
7	716258	716258	716258	716258	716258	716258	CENTER DISK	2	
8	716259	716259	716259	716259	716259	716259	WASHER	2	
9	780135	780135	780135	780135	780135	780135	OUT CHAMBER	2	
12	-	-	-	640154	640154	-	O-RING	2	
13	710207	710207	710207	710207	710207	710207	TIE ROD	4	
14	683541	683541	683541	683541	683541	683541	BOLT	12	
15	804604	804604	804604	804604	804604	804604	BODY ASSY.	1	
15-1	772929	772929	772929	772929	772929	772929	BODY	1	
15-2	772931	772931	772931	772931	772931	772931	THROAT BEARING	2	
15-3	685414	685414	685414	685414	685414	685414	V-PACKING	2	
15-4	685276	685276	685276	685276	685276	685276	O-RING	2	
15-5	772932	772932	772932	772932	772932	772932	VALVE SEAT	2	
15-6	640009	640009	640009	640009	640009	640009	O-RING	2	
15-7	802360	802360	802360	802360	802360	802360	PILOT VALVE ASSY.	2	
15-8	708666	708666	708666	708666	708666	708666	SPRING	2	
15-9	772948	772948	772948	772948	772948	772948	SPRING SEAT	2	
15-10	686030	686030	686030	686030	686030	686030	TAPPING SCREW	13	
15-11	640132	640132	640132	640132	640132	640132	O-RING	1	
15-12	772933	772933	772933	772933	772933	772933	BUSHING	1	
16	710271	710271	710271	710271	710271	710271	CENTER ROD	1	
18	771054	771054	771054	771054	771054	771054	CUSHION	2	
19	780012	780012	780012	780012	780012	780012	MANIFOLD - NPT	2	
19	780210	780210	780210	780210	780210	780210	MANIFOLD - FLG	2	
20	804608	804608	804608	804608	804608	804608	VALVE BODY ASSY.	1	
20-1	772991	772991	772991	772991	772991	772991	RESET BUTTON	1	
20-2	640002	640002	640002	640002	640002	640002	O-RING	1	
20-3	772946	772946	772946	772946	772946	772946	CAP A	1	
20-4	640043	640043	640043	640043	640043	640043	O-RING	2	
20-5	771241	771241	771241	771241	771241	771241	PACKING	1	
20-6	802400	802400	802400	802400	802400	802400	C-SPOOL ASSY.	1	
20-6-seal	771053	771053	771053	771053	771053	771053	SEAL RING	5	
20-7	804609	804609	804609	804609	804609	804609	SLEEVE ASSY	1	
20-7-*1	686029	686029	686029	686029	686029	686029	O-RING	6	
20-8	832903	832903	832903	832903	832903	832903	VALVE BODY ASSY.	1	
20-9	771914	771914	771914	771914	771914	771914	CUSHION	1	
20-10	772947	772947	772947	772947	772947	772947	CAP B	1	
21	686031	686031	686031	686031	686031	686031	BOLT	4	
22	684320	684320	684320	684320	684320	684320	BALL VALVE	1	
24	772848	772848	772848	772848	772848	772848	GASKET	1	
25	804697	804697	804697	804697	804697	804697	MUFFLER	1	
26	621153	621153	621153	621153	621153	621153	BOLT	4	
27	686032	686032	686032	686032	686032	686032	NUT W/FLANGE	4	
28	771235	771235	771235	771235	771235	771235	BASE	2	
29	770551	770551	770551	770551	770551	770551	FOOT RUBBER	4	
30	780125	780125	780125	780125	780125	780125	CENTER DISK	2	
32	683635	683635	683635	683635	683635	683635	NUT	12	
33	681300	681300	681300	681300	681300	681300	SPRING WASHER	12	
34	631329	631329	631329	631329	631329	631329	FLAT WASHER	12	
35	771244	771244	771244	771244	771244	771244	TOOL	2	
36	686033	686033	686033	686033	686033	686033	NUT W/FLANGE	12	
37	680257	680257	680257	680257	680257	680257	SPRING WASHER	12	
38	631330	631330	631330	631330	631330	631330	FLAT WASHER	12	
KIT	K25-PC-PP	K25-PN-PP	K25-PE-PP	K25-PH-PP	K25-PS-PP	K25-PV-PP	Liquid Side Kit		
KIT	K225-AP						Air Motor Kit		

NOTE: 804647 = CENTER BODY ASSEMBLY (804604 + 804608)

Air Operated Double Diaphragm Pump

General Tools:

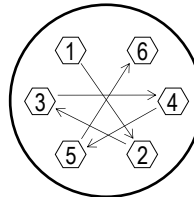
- Socket wrenches - 10mm, 12mm, 13mm, 17mm, 22mm
- Hexagonal box wrench - 5mm
- Open-end wrenches - 12mm, 13mm, 22mm
- Adjustable angle wrenches
- Phillips head screw driver

Special Tools:

- Accessory tool (771244) used to remove center disk.
- Sleeve remover (713148) used to remove sleeves (sold separately).

Miscellaneous:

- Assembly Oil - turbine oil none additional class 1 (equivalent to ISA VGA32 grade)
- Nuts - M14 x 1.5
- Urea grease grade (NLGI) No. 2



Tightening torque for center rod and out chambers.

Center Rod	29 ft-lbf {40 N-m}
Out Chambers C/N/E/V	8 ft-lbf {10 N-m}
Out Chambers H/S	10lb-ft {13N-m}

Tightening torque for manifold bolts.

BP_PP	8 ft-lbf {10 N-m}
-------	-------------------

Customer Notes

Model #: _____
 Description: _____
 Serial #: _____
 Date Installed: _____
 Department Location: _____
 Tag/Project: _____