

EXPLODED VIEW & PARTS LISTING

Air Operated Double Diaphragm Pump

Model: NDP-25 Aluminum-HP
High Pressure Pumps



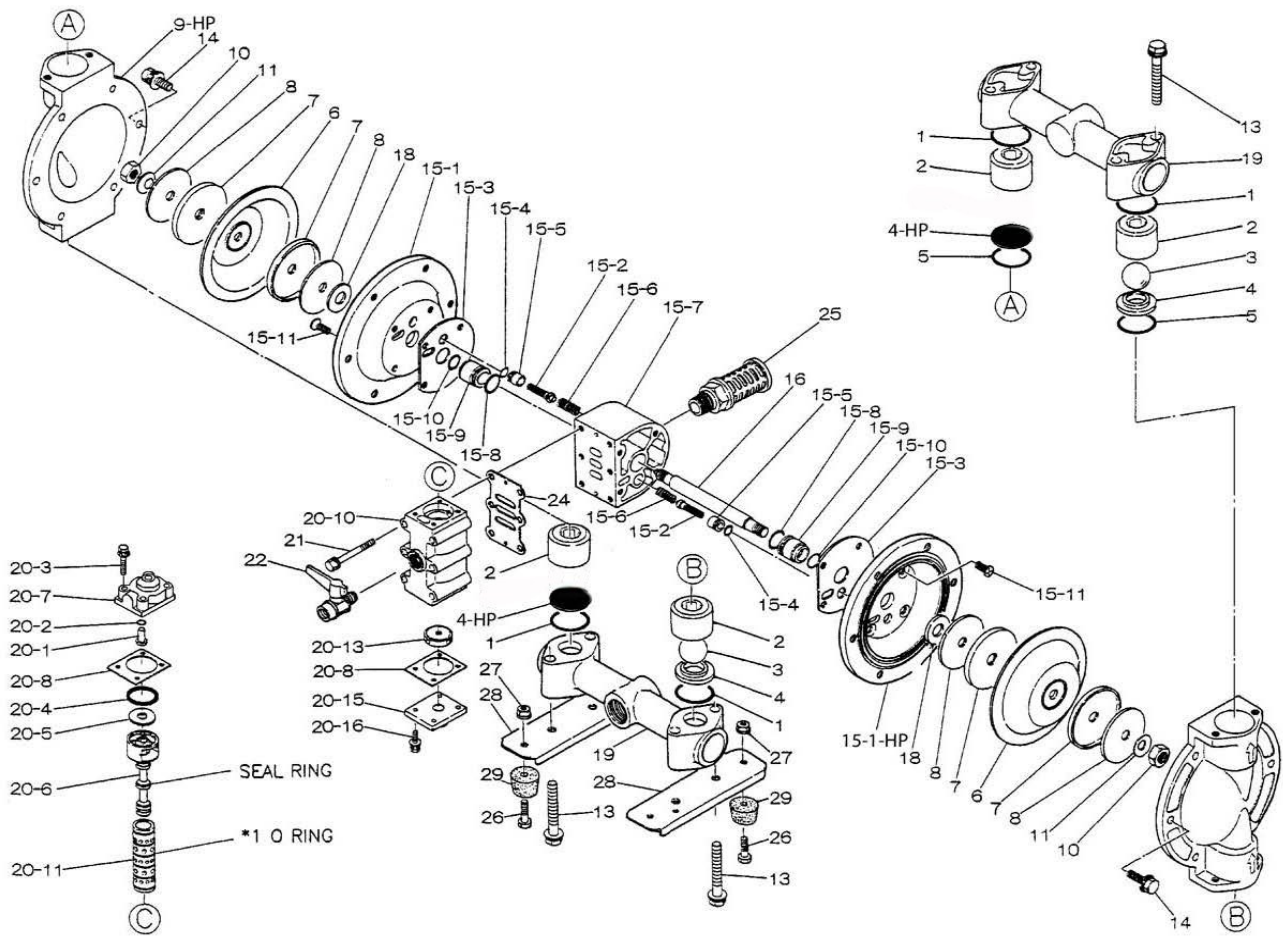
To Purchase:

- 800-990-7867
- sales@yamadapump.com
- Find My Rep

More Information:

- YouTube: @yamadapump
- yamadapump.com
- Data Sheets | CAD Drawings | Manuals Literature | BOM | Performance Curves

Trial Program



Air Operated Double Diaphragm Pump

	NDP-25BAC-HP	NDP-25BAN-HP	NDP-25BAE-HP	NDP-25BAV-HP	NDP-25BAH-HP	NDP-25BAS-HP			
REF No.	PARTS No.	PARTS No.	PARTS No.	PARTS No.	PARTS No.	PARTS No.	DESCRIPTION	QTY.	REORDER
	851527-HP	851528-HP	851529-HP	851530-HP	852100-HP	852701-HP	Hi-Pressure Pumps		
1	640044	640044	683997	642044	640044	683997	O-RING	4	
2	711702	711702	711702	711702	711702	711702	VALVE STOPPER	4	
3	770556	770581	770590	770599	773127	770590	BALL	2	
4	590087	590087	590087	590087	590087	590087	VALVE SEAT	2	
4-HP	711707-HP	711707-HP	711707-HP	711707-HP	711707-HP	711707-HP	VALVE SEAT - HP	2	
5	640134	640134	683996	642134	6400134	683996	O-RING	2	
6	772961	772962	772963	772964	771363	771974	DIAPHRAGM	2	
7	716258	716258	716258	716258	716258	716258	CENTER DISK	4	
8	716259	716259	716259	716259	716259	716259	PLAIN WASHER	4	
9	711687	711687	711687	711687	711687	711687	OUT CHAMBER	1	
9-HP	711687-HP	711687-HP	711687-HP	711687-HP	711687-HP	711687-HP	OUT CHAMBER - HP	1	
10	682263	682263	682263	682263	682263	682263	NUT	2	
11	682730	682730	682730	682730	682730	682730	CONED DISK SPRING	2	
12	-	-	-	-	640154	640154	O-RING	2	
13	611185	611185	611185	611185	611185	611185	BOLT	8	
13a	631917	631917	631917	631917	631917	631917	WAVE WASHER	8	
14	611177	611177	611177	611177	611177	611177	BOLT	12	
14a	631917	631917	631917	631917	631917	631917	WAVE WASHER	12	
15	803248-HP	803248-HP	803248-HP	803248-HP	803248-HP	803248-HP	CENTER BODY ASSEMBLY	1	
15-1	715939	715939	715939	715939	715939	715939	AIR CHAMBER	1	
15-1-HP	715939-HP	715939-HP	715939-HP	715939-HP	715939-HP	715939-HP	AIR CHAMBER - HP	1	
15-2	802360	802360	802360	802360	802360	802360	PILOT VALVE ASSEMBLY	2	
15-3	771057	771057	771057	771057	771057	771057	GASKET	2	
15-4	640009	640009	640009	640009	640009	640009	O-RING	2	
15-5	771945	771945	771945	771945	771945	771945	VALVE SEAT	2	
15-6	708666	708666	708666	708666	708666	708666	SPRING	2	
15-7	709812	709812	709812	709812	709812	709812	BODY	1	
15-8	685276	685276	685276	685276	685276	685276	O-RING	2	
15-9	772703	772703	772703	772703	772703	772703	THROAT BEARING	2	
15-10	685414	685414	685414	685414	685414	685414	PACKING	2	
15-11	682486	682486	682486	682486	682486	682486	FLAT HEAD BOLT	8	
16	709162	709162	709162	709162	709162	709162	CENTER ROD	1	
18	771054	771054	771054	771054	771054	771054	CUSHION	2	
19	831281	831281	831281	831281	831281	831281	MANIFOLD	2	
20	802362	802362	802362	802362	802362	802362	VALVE BODY ASSEMBLY	1	
20-1	709161	709161	709161	709161	709161	709161	RESET BUTTON	1	
20-2	640005	640005	640005	640005	640005	640005	O-RING	1	
20-3	682704	682704	682704	682704	682704	682704	BOLT	4	
20-4	771241	771241	771241	771241	771241	771241	PACKING	1	
20-5	715961	715961	715961	715961	715961	715961	PLAIN WASHER	1	
20-6	802400	802400	802400	802400	802400	802400	C SPOOL VALVE ASSEMBLY	1	
20-6-seal	771053	771053	771053	771053	771053	771053	SEAL RING	5	
20-7	710221	710221	710221	710221	710221	710221	CAP	1	
20-8	771240	771240	771240	771240	771240	771240	GASKET	2	
20-10	711639	711639	711639	711639	711639	711639	VALVE BODY	1	

Air Operated Double Diaphragm Pump

	NDP-25BAC-HP	NDP-25BAN-HP	NDP-25BAE-HP	NDP-25BAV-HP	NDP-25BAH-HP	NDP-25BAS-HP			
REF No.	PARTS No.	PARTS No.	PARTS No.	PARTS No.	PARTS No.	PARTS No.	DESCRIPTION	QTY.	REORDER
	851527-HP	851528-HP	851529-HP	851530-HP	852100-HP	852701-HP	Hi-Pressure Pumps		
20-11	803931	803931	803931	803931	803931	803931	SLEEVE ASSEMBLY	1	
20-11-*1	771080	771080	771080	771080	771080	771080	O-RING	6	
20-13	771914	771914	771914	771914	771914	771914	CUSHION	1	
20-15	709305	709305	709305	709305	709305	709305	CAP	1	
20-16	682262	682262	682262	682262	682262	682262	BOLT	4	
21	682265	682265	682265	682265	682265	682265	BOLT	6	
22	684320	684320	684320	684320	684320	684320	BALL VALVE	1	
24	771056	771056	771056	771056	771056	771056	GASKET	1	
25	804697	804697	804697	804697	804697	804697	SILENCER	1	
26	611148	611148	611148	611148	611148	611148	BOLT	4	
27	682276	682276	682276	682276	682276	682276	NUT WITH FLANGE	4	
28	709156	709156	709156	709156	709156	709156	PUMP BASE	2	
29	770551	770551	770551	770551	770551	770551	CUSHION	4	
KIT	K225-AM						AIR MOTOR		

Not Shown: Hose Assembly with Fittings - contact the Yamada factory.

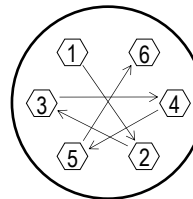
General Tools:

- Socket wrench - 10mm, 12mm, 13mm, 17mm, 22mm
- Hexagonal box wrench - 5mm
- Open-end wrench - 22mm

Miscellaneous:

- Assembly Oil - Turbine oil none additional class 1 (equivalent to ISA VGA32 grade)
- Nuts - M14 x 1.5
- Urea grease grade (NLGI) No. 2
- Lubricants equivalent to (Loctite Anti-Seize 767)

Torque Requirements:



Tightening torque for center rod and out chambers.

- Center Rod 29 ft-lbf {40 N-m}
- Out Chambers (C/N/E/V) 8 ft-lbf {10 N-m}
- Out Chambers (H/S) 15 ft-lbf {20 N-m}

Tightening torque for manifold retainer bolts.
BA_ 8 ft-lbf {10 N-m}

Customer Notes

Model #: _____
 Description: _____
 Serial #: _____
 Date Installed: _____
 Department Location: _____
 Tag/Project: _____