

# EXPLODED VIEW & PARTS LISTING

## Air Operated Double Diaphragm Pump

Model: NDP-20 Aluminum-HP  
High Pressure Pumps



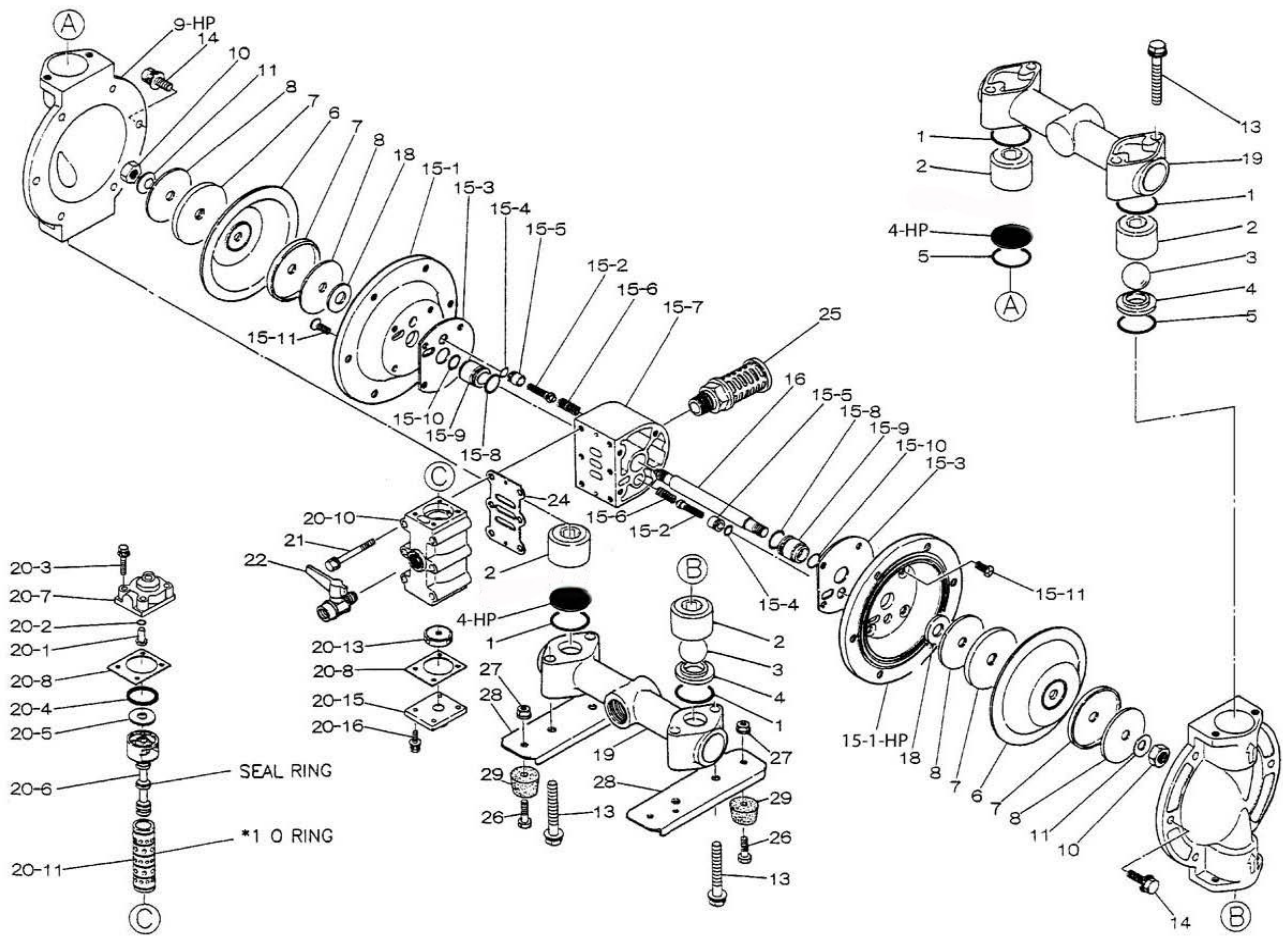
### To Purchase:

- 800-990-7867
- sales@yamadapump.com
- Find My Rep

### More Information:

- YouTube: @yamadapump
- yamadapump.com
- Data Sheets | CAD Drawings | Manuals Literature | BOM | Performance Curves

### Trial Program



Air Operated Double Diaphragm Pump

	NDP-20BAC-HP	NDP-20BAN-HP	NDP-20BAE-HP	NDP-20BAV-HP	NDP-20BAH-HP	NDP-20BAS-HP			
	851514-HP	851515-HP	851516-HP	851517-HP	852098-HP	852693-HP	Hi-Pressure Pumps		
REF No.	PARTS No.	PARTS No.	PARTS No.	PARTS No.	PARTS No.	PARTS No.	DESCRIPTION	QTY.	REORDER
1	640036	640036	684118	642036	640036	684118	O-RING	4	
2	711700	711700	711700	711700	711700	711700	VALVE STOPPER	4	
3	770705	770720	770723	770726	773126	770723	BALL	2	
4	590086	590086	590086	590086	590086	590086	VALVE SEAT	2	
4-HP	711705-HP	711705-HP	711705-HP	711705-HP	711705-HP	711705-HP	VALVE SEAT - HP	2	
5	640132	640132	684117	642132	640132	684117	O-RING	2	
6	772957	772958	772959	772960	771362	771973	DIAPHRAGM	2	
7	716225	716225	716225	716225	716225	716258	CENTER DISK	4	
8	716226	716226	716226	716226	716226	716259	PLAIN WASHER	4	
9	711686	711686	711686	711686	711686	711695	OUT CHAMBER	1	
9-HP	711686-HP	711686-HP	711686-HP	711686-HP	711686-HP	711695-HP	OUT CHAMBER - HP	1	
10	682263	682263	682263	682263	682263	682263	NUT	2	
11	682730	682730	682730	682730	682730	682730	CONED DISK SPRING	2	
12	640151	640151	640151	640151	640151	640151	O-RING	2	
13	611159	611159	611159	611159	611159	611159	BOLT	8	
13a	631916	631916	631916	631916	631916	631916	WAVE WASHER	8	
14	611151	611151	611151	611151	611151	611151	BOLT	12	
14a	631916	631916	631916	631916	631916	631916	WAVE WASHER	12	
<b>15</b>	<b>803247-HP</b>	<b>803247-HP</b>	<b>803247-HP</b>	<b>803247-HP</b>	<b>803247-HP</b>	<b>803247-HP</b>	<b>CENTER BODY ASSEMBLY</b>	<b>1</b>	
15-1	715937	715937	715937	715937	715937	715937	AIR CHAMBER	1	
15-1-HP	715937-HP	715937-HP	715937-HP	715937-HP	715937-HP	715937-HP	AIR CHAMBER - HP	1	
15-2	802360	802360	802360	802360	802360	802360	PILOT VALVE ASSEMBLY	2	
15-3	771057	771057	771057	771057	771057	771057	GASKET	2	
15-4	640009	640009	640009	640009	640009	640009	O-RING	2	
15-5	771945	771945	771945	771945	771945	771945	VALVE SEAT	2	
15-6	708666	708666	708666	708666	708666	708666	SPRING	2	
15-7	709812	709812	709812	709812	709812	709812	BODY	1	
15-8	685276	685276	685276	685276	685276	685276	O-RING	2	
15-9	772703	772703	772703	772703	772703	772703	THROAT BEARING	2	
15-10	685414	685414	685414	685414	685414	685414	PACKING	2	
15-11	682486	682486	682486	682486	682486	682486	FLAT HEAD BOLT	8	
16	709163	709163	709163	709163	709163	709163	CENTER ROD	1	
18	771054	771054	771054	771054	771054	771054	CUSHION	2	
19	831280	831280	831280	831280	831280	831322	MANIFOLD	2	
<b>20</b>	<b>802362</b>	<b>802362</b>	<b>802362</b>	<b>802362</b>	<b>802362</b>	<b>802362</b>	<b>VALVE BODY ASSEMBLY</b>	<b>1</b>	
20-1	709161	709161	709161	709161	709161	709161	RESET BUTTON	1	
20-2	640005	640005	640005	640005	640005	640005	O-RING	1	
20-3	682704	682704	682704	682704	682704	682704	BOLT	4	
20-4	771241	771241	771241	771241	771241	771241	PACKING	1	
20-5	715961	715961	715961	715961	715961	715961	PLAIN WASHER	1	
20-6	802400	802400	802400	802400	802400	802400	C SPOOL VALVE ASSEMBLY	1	
20-6-seal	771053	771053	771053	771053	771053	771053	SEAL RING	5	
20-7	710221	710221	710221	710221	710221	710221	CAP	1	
20-8	771240	771240	771240	771240	771240	771240	GASKET	2	
20-10	711639	711639	711639	711639	711639	711639	VALVE BODY	1	

Air Operated Double Diaphragm Pump

	NDP-20BAC-HP	NDP-20BAN-HP	NDP-20BAE-HP	NDP-20BAV-HP	NDP-20BAH-HP	NDP-20BAS-HP			
	851514-HP	851515-HP	851516-HP	851517-HP	852098-HP	852693-HP	Hi-Pressure Pumps		
REF No.	PARTS No.	PARTS No.	PARTS No.	PARTS No.	PARTS No.	PARTS No.	DESCRIPTION	QTY.	REORDER
20-11	803931	803931	803931	803931	803931	803931	SLEEVE ASSEMBLY	1	
20-11-*1	771080	771080	771080	771080	771080	771080	O-RING	6	
20-13	771914	771914	771914	771914	771914	771914	CUSHION	1	
20-15	709305	709305	709305	709305	709305	709305	CAP	1	
20-16	682262	682262	682262	682262	682262	682262	BOLT	4	
21	682265	682265	682265	682265	682265	682265	BOLT	6	
22	686019	686019	684320	684320	684320	684320	BALL VALVE	1	
24	771056	771056	771056	771056	771056	771056	GASKET	1	
25	804697	804697	804697	804697	804697	804697	SILENCER	1	
26	611148	611148	611148	611148	611148	611148	BOLT	4	
27	682276	682276	682276	682276	682276	682276	NUT WITH FLANGE	4	
28	709157	709157	709156	709156	709156	709156	PUMP BASE	2	
29	770551	770551	770551	770551	770551	770551	CUSHION	4	
KIT	K225-AM						AIR MOTOR		

Not Shown: Hose Assembly with Fittings - contact the Yamada factory.

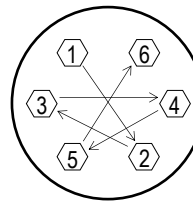
General Tools:

- Socket wrench - 10mm, 12mm, 13mm, 17mm, 22mm
- Hexagonal box wrench - 5mm
- Open-end wrench - 22mm

Miscellaneous:

- Assembly Oil - Turbine oil none additional class 1 (equivalent to ISA VGA32 grade)
- Nuts - M14 x 1.5
- Urea grease grade (NLGI) No. 2, Shell Alvania Grease S1
- Lubricants equivalent to (Loctite Anti-Seize 767)

Torque Requirements:



Tightening torque for center rod and out chambers.

- Center Rod 29 ft-lbf {40 N-m}
- Out Chambers (C/N/E/V) 8 ft-lbf {10 N-m}
- Out Chambers (H/S) 10 ft-lbf {13 N-m}
- Tightening torque for manifold retainer bolts.  
BA\_ 13 ft-lbf {18 N-m}

Customer Notes

Model #: \_\_\_\_\_  
 Description: \_\_\_\_\_  
 Serial #: \_\_\_\_\_  
 Date Installed: \_\_\_\_\_  
 Department Location: \_\_\_\_\_  
 Tag/Project: \_\_\_\_\_