

# EXPLODED VIEW & PARTS LISTING

## Air Operated Double Diaphragm Pump

Model: NDP-20BAT

Model#: 851518



### To Purchase:

☎ 800-990-7867

✉ sales@yamadapump.com

📍 Find My Rep

### More Information:

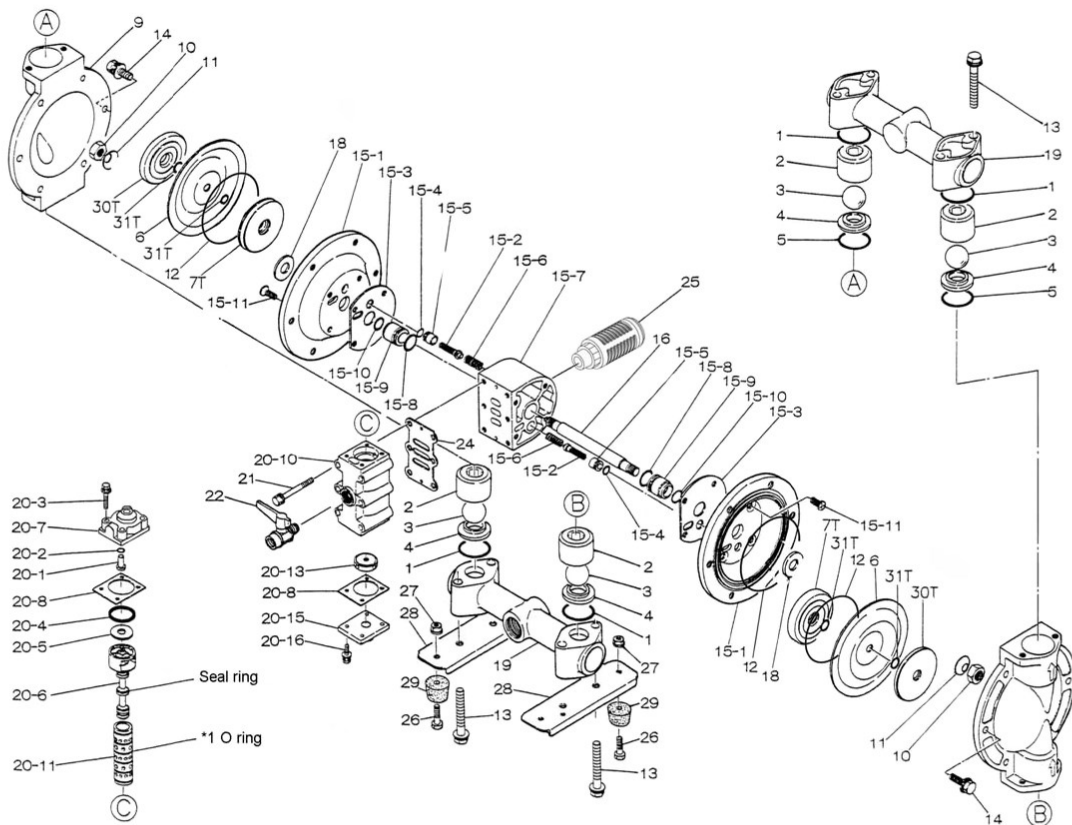
▶ YouTube: @yamadapump

🌐 yamadapump.com

Data Sheets | CAD Drawings | Manuals  
Literature | BOM | Performance Curves

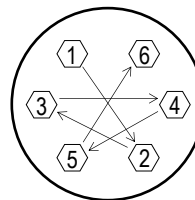
Note: starting serial # 487505

### Trial Program



Air Operated Double Diaphragm Pump

REF. No.	PART No.	DESCRIPTION	QTY.	REORDER
1	643036	O-ring	4	
2	711700	Ball Guide	4	
3	770736	Ball	4	
4	590086	Valve Seat	4	
5	771131	O-ring	2	
6	771083	Diaphragm	2	
7T	709456	Center Disk	2	
9	711686	Out Chamber	2	
10	682263	Nut	2	
11	682730	Coned Disk Spring	2	
12	640151	O-ring	2	
13	682264	Bolt	8	
14	682724	Bolt	12	
<b>15</b>	<b>804878</b>	<b>Body Assembly</b>	<b>1</b>	
15-1	715937	Air Chamber	2	
15-2	802360	Pilot Valve Assy.	2	
15-3	771057	Gasket	2	
15-4	640009	O-ring	2	
15-5	771945	Valve Seat	2	
15-6	708666	Spring	2	
15-7	709812	Body	1	
15-8	685276	O-ring	2	
15-9	772703	Throat Bearing	2	
15-10	685414	Packing	2	
15-11	682486	Flat Head Bolt	8	
16	709163	Center Rod	1	
18	771054	Cushion	2	
19	831280	Manifold	2	
<b>20</b>	<b>802362</b>	<b>Valve Body Assembly</b>	<b>1</b>	
20-1	709161	Reset Button	1	
20-2	640005	O-ring	1	
20-3	682704	Bolt	4	
20-4	771241	Packing	1	
20-5	715961	Plain Washer	1	
20-6	802400	C Spool Valve Assy.	1	
20-6-seal	771053	Seal Ring	5	
20-7	710221	Cap	1	
20-8	771240	Gasket	2	
20-10	711639	Valve Body	1	
20-11	803931	Sleeve Assembly	1	
20-11-*1	771080	O-ring	6	
20-13	771914	Cushion	1	
20-15	709305	Cap	1	
20-16	682262	Bolt	4	
21	682265	Bolt	6	
22	686019	Ball Valve	1	
24	771056	Gasket	1	
25	804697	Silencer	1	
26	611148	Bolt	4	
27	682276	Nut with Flange	4	
28	709157	Pump Base	2	
29	770551	Cushion	4	
30T	709314	Center Disk	2	
31T	643013	O-ring	4	
KIT	K20-MT-1	LIQUID SIDE KIT		
KIT	K225-AM	AIR MOTOR KIT		



**Tightening torque for center rod and out chambers.**

Center Rod 29 ft-lbf {40 N-m}  
Out Chambers 10 ft-lbf {13 N-m}

**Tightening torque for manifold retainer bolts.**

BAT 15 ft-lbf {20 N-m}

**General Tools:**

- Socket wrenches - 10mm, 12mm, 13mm, 17mm, 22mm
- Hexagonal box wrench - 5mm
- Open-end wrenches - 22mm

**Special Tools:**

- Sleeve remover (713148) used for removing the sleeve.

**Miscellaneous:**

- Assembly Oil - turbine oil none additional class 1 (equivalent to ISA VGA32 grade)
- Nuts - M14 x 1.5
- Urea grease grade (NLGI) No. 2
- Lubricants equivalent to (Loctite Anti-Seize 767)

Customer Notes	
Model #:	_____
Description:	_____
Serial #:	_____
Date Installed:	_____
Department Location:	_____
Tag/Project:	_____