

EXPLODED VIEW & PARTS LISTING

Air Operated Double Diaphragm Pump

Model: NDP-15FDT

Model#: 853782



Groundable Acetal

To Purchase:

☎ 800-990-7867

✉ sales@yamadapump.com

📍 Find My Rep

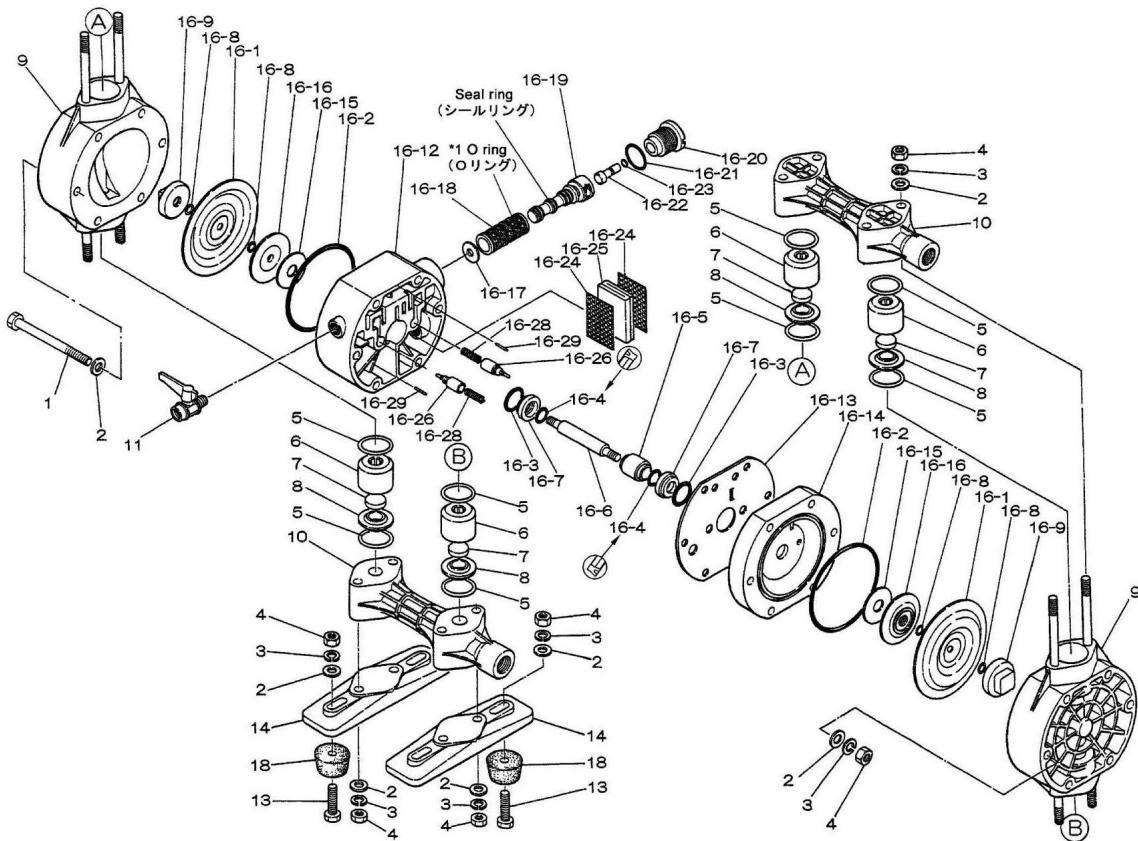
More Information:

▶ YouTube: @yamadapump

🌐 yamadapump.com

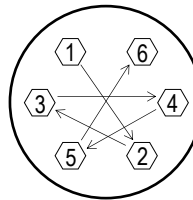
Data Sheets | CAD Drawings | Manuals
Literature | BOM | Performance Curves

Trial Program



Air Operated Double Diaphragm Pump

REF. No.	PARTS No.	DESCRIPTION	QTY.	REORDER
1	684310	BOLT	6	
2	631329	PLAIN WASHER	24	
3	681300	SPRING LOCK WASHER	18	
4	628012	NUT	18	
5	643027	O-RING	8	
6	772718	VALVE STOPPER	4	
7	771340	FLAT VALVE	4	
8	772719	VALVE SEAT	4	
9	780202	MANIFOLD	2	
10	780199	OUT CHAMBER	2	
11	683055	BALL VALVE	1	
13	621153	BOLT	4	
14	772720	BASE	2	
16-1	770933	DIAPHRAGM	2	
16-2	640144	O-RING	2	
16-3	640020	O-RING	2	
16-4	684284	PACKING	2	
16-5	771337	GUIDE	1	
16-6	710578	CENTER ROD	1	
16-7	771336	BUSHING	2	
16-8	643005	O-RING	4	
16-9	772722	CENTER DISK	2	
16-12	780029	BODY A	1	
16-13	771347	GASKET	1	
16-14	780030	BODY B	1	
16-15	771342	CUSHION	2	
16-16	771344	CENTER DISK	2	
16-17	771483	CUSHION	2	
16-18	804249	SLEEVE ASSEMBLY	1	
16-18-*1	683123	O-RING (SLEEVE O.D.)	6	
16-19	802835	C-SPOOL VALVE ASSY.	1	
16-19 seal	771484	SEAL RING	5	
16-20	771695	CAP	1	
16-21	640022	O-RING	1	
16-22	771350	RESET BUTTON	1	
16-23	640002	O-RING	1	
16-24	771589	MESH	2	
16-25	771465	SILENCER	1	
16-26	832141	PILOT VALVE ASSY.	2	
16-28	710577	SPRING	2	
16-29	632752	SPRING PIN	2	
18	770551	CUSHION	4	
KIT	K15-DT	Liquid Side Kit		
KIT	K15-AM	Air Motor Kit		

**Tightening torque for center rod and out chambers.**

Center Rod	122 in-lbf {14 N-m}
Out Chambers	105 in-lbf {12 N-m}

Tightening torque for manifold retainer bolts or nuts.

FDT	105 in-lbf {12 N-m}
-----	---------------------

General Tools:

- Socket wrench - 13mm
- Open-end wrenches - 13mm, 21mm
- Plier

Special Tools (sold separately):

- Cap & disk remover (771132) used to remove center disk.
- Sleeve remover (713148) used to remove sleeves.

Miscellaneous:

- Assembly Oil - turbine oil none additional class 1 (equivalent to ISA VGA32 grade)
- Nuts - M8 x 1.25
- Urea grease grade (NLGI) No. 2