

EXPLODED VIEW & PARTS LISTING

Air Operated Double Diaphragm Pump

Model: G15ST
Part # 854735



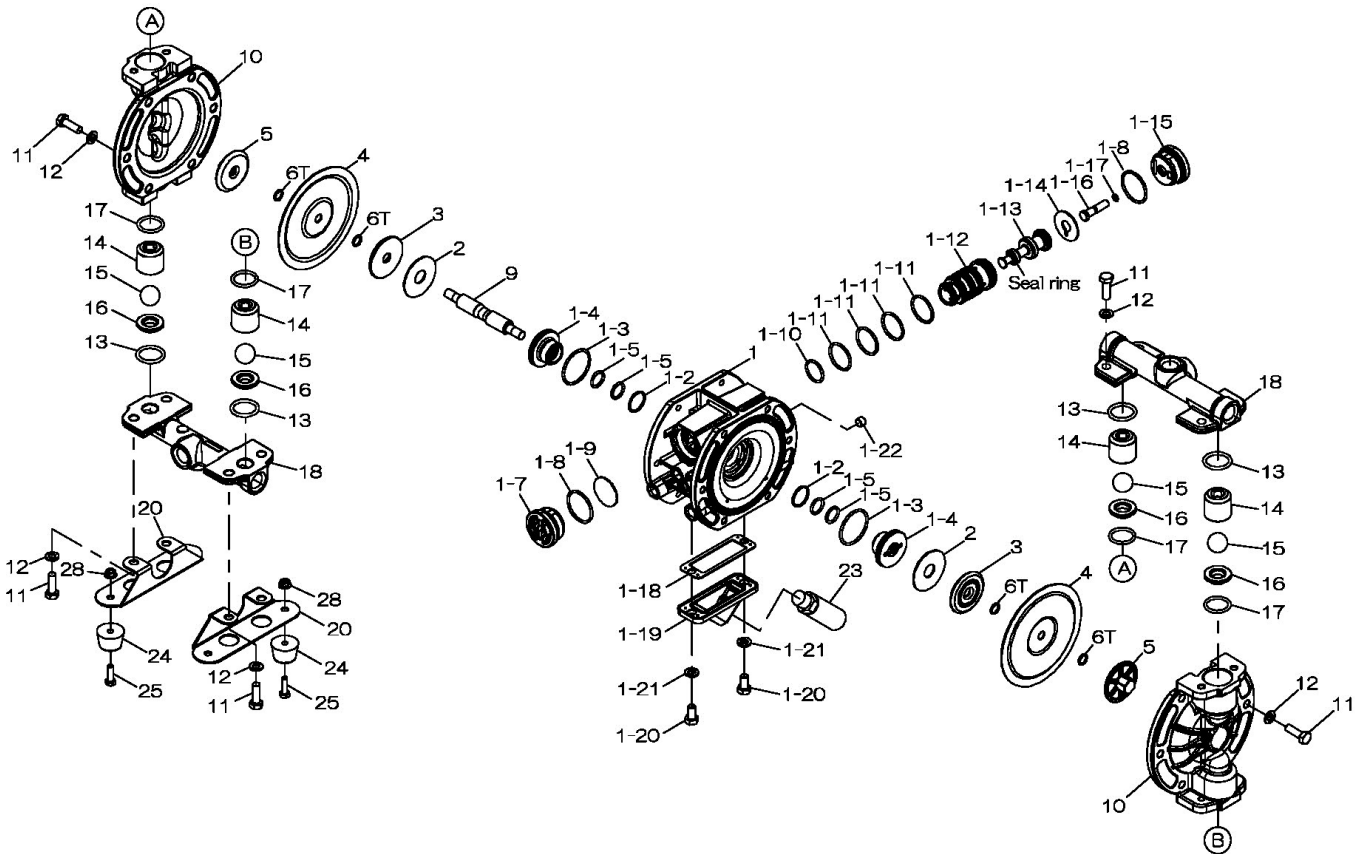
To Purchase:

- ☎ 800-990-7867
- ✉ sales@yamadapump.com
- 📍 Find My Rep

More Information:

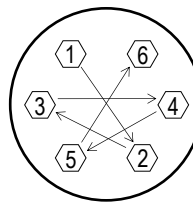
- ▶ YouTube: @yamadapump
- 🌐 yamadapump.com
- Data Sheets | CAD Drawings | Manuals Literature | BOM | Performance Curves*

Trial Program



Air Operated Double Diaphragm Pump

REF.NO.	PART NO.	DESCRIPTION	QTY.	REORDER
1	805130	BODY ASSY (G15) NPT	1	
1-1	717082	BODY (G15) NPT	1	
1-2	684725	O RING (NBR) JASO-1022	2	
1-3	686733	O RING (NBR) JASO-2040	2	
1-4	773279	GUIDE BUSH (G15)	2	
1-5	640015	O RING 16MM X 2.5MM B	4	
1-7	716917	CAP A (G15)	1	
1-8	686734	O RING (NBR) JASO-2035	2	
1-9	773280	CUSHION (DP-15)	1	
1-10	685276	O RING 23.3MMX2.4MM	1	
1-11	686029	O RING (BUNA)	4	
1-12	716950	SLEEVE (G15)	1	
1-13	805131	SPOOL ASSY (G15)	1	
1-14	773281	CUSHION (G15)	1	
1-15	716918	CAP B (G15)	1	
1-16	717035	RESET BUTTON (G15)	1	
1-17	640002	O RING 4.9MM X 1.9MM	1	
1-18	773283	GASKET (G15)	1	
1-19	717083	COVER (G15) NPT	1	
1-20	631916	WAVE WASHER M8	2	
1-21	611145	BOLT 8X1.25X16	2	
1-22	634360	PLUG 1/8"	1	
2	773278	CUSHION (G15)	2	
3	716923	CENTER DISK (G15)	2	
4	773276	DIAPHRAGM (PTFE) G15	2	
5	717215	CENTER DISK (G15) SUS	2	
6T	643007	O RING 9.8MM X 1.9MM	4	
9	717100	CENTER ROD (G15) SUS	1	
10	716927	OUT CHAMBER (G15) SUS	2	
11	621149	BOLT M8X1.25X25 HET FT	20	
12	631936	WAVE WASHER M8(SUS)	20	
13	643025	O RING 25.7MM X 3.5MM	4	
14	717208	VALVE STOPPER(G15)SUS	4	
15	773423	BALL (PTFE) G15	4	
16	717210	VALVE SEAT (G15) SUS	4	
17	643130	O RING 24.4MM X 3.1MM	4	
18	716929	MANIFOLD (G15) SUS NPT	2	
20	717186	BASE (G15)	2	
23	682520	SILENCER NPT3/8	1	
24	771123	FOOT RUBBER	4	
25	611101	BOLT M6X1.0X20	4	
28	682817	NUT W/ FLANGE M6X1.0	4	
KIT	KG15-MT	LIQUID END KIT		
KIT	KG15-AM-M	AIR MOTOR KIT		



Tightening torque for center rod and out chambers.

Center Rod 160 in-lbf {18 N-m}
Out Chambers 105 in-lbf {12 N-m}

Tightening torque for manifold retainer bolts.

G15ST 160 in-lbf {18 N-m}

General Tools:

- Socket wrench - 10mm, 13mm, 17MM
- Hexagonal box wrenches - 5mm
- Open-end wrench - 10mm, 13mm, 17mm

Special Tools (sold separately):

- Cap & disc remover (771132) used to remove cap
- Sleeve remover (713148) used to remove sleeve

Miscellaneous:

- Assembly Oil—turbine oil none additional class 1 (equivalent to ISO VCA32 grade)
- Urea grease grade (NLGI) No. 2
- Thread locking agent (equivalent to LOCTITE® 222)

Customer Notes

Model #: _____
Description: _____
Serial #: _____
Date Installed: _____
Department Location: _____
Tag/Project: _____