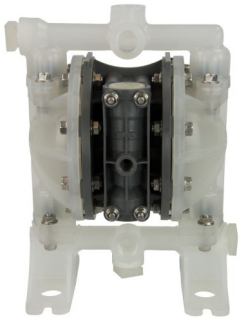


Air Operated Double Diaphragm Pump



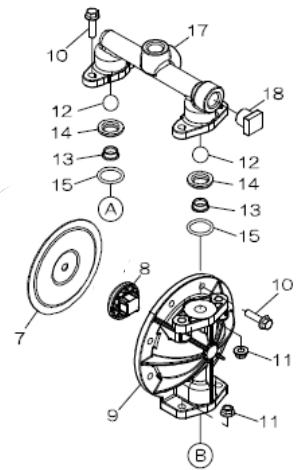
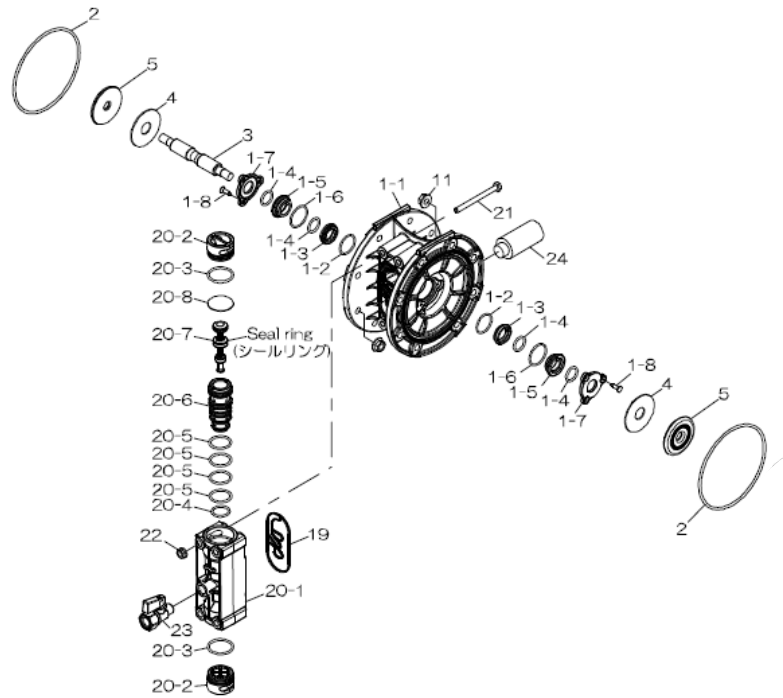
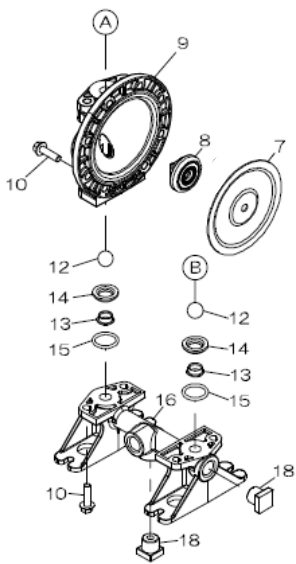
To Purchase:

- 800-990-7867
- sales@yamadapump.com
- Find My Rep

More Information:

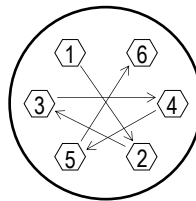
- YouTube: @yamadapump
- yamadapump.com
- Data Sheets | CAD Drawings | Manuals Literature | BOM | Performance Curves*

Trial Program



Air Operated Double Diaphragm Pump

REF. NO.	PART NO.	DESCRIPTION	QTY.	REORDER
1	805217	BODY ASSY NPT	1	
1-1	773410	BODY NPT	1	
1-2	686893	O-RING	2	
1-3	773385	GUIDE BUSH A	2	
1-4	640015	O-RING 16MM X 2.5MM B	4	
1-5	780301	GUIDE BUSH B	2	
1-6	684900	O-RING	2	
1-7	773384	GUIDE BUSH STOPPER	2	
1-8	686894	TAPPING SCREW	6	
2	640147	O-RING	2	
3	717100	CENTER ROD	1	
4	773278	CUSHION	2	
5	716923	CENTER DISK	2	
7	773315	DIAPHRAGM	2	
8	773391	CENTER DISK	2	
9	780303	OUT CHAMBER	2	
10	686892	BOLT W/FLANGE	24	
11	686032	NUT W/FLANGE	24	
12	773424	BALL	4	
13	773430	SEAT B	4	
14	773429	SEAT A	4	
15	684114	O-RING	4	
16	780307	MANIFOLD B	1	
17	773395	MANIFOLD A	1	
18	773393	PLUG	3	
19	773407	GASKET	1	
20	805210	VALVE BODY ASSY.	1	
20-1	780300	VALVE BODY	1	
20-2	773383	CAP	2	
20-3	683112	O-RING	2	
20-4	685453	O-RING	1	
20-5	685276	O-RING	4	
20-6	780302	SLEEVE	1	
20-7	805208	SPOOL ASSY.	1	
20-8	773428	CUSHION	1	
21	621115	BOLT M6X1X70	4	
22	684086	NUT W/FLANGE M6X1	4	
24	686762	SILENCER NPT 3/8	1	
KIT	KG15-AM-P	AIR MOTOR KIT		
KIT	KG15-PS	LIQUID END KIT		



**Tightening torque for center rod and out chambers.**

Center Rod 177 in-lbf {20 N-m}  
Out Chambers 89 in-lbf {10 N-m}

**Tightening torque for manifold retainer bolts.**

G15PS 89 in-lbf {10 N-m}

**General Tools:**

- Socket wrench - 10mm, 12mm
- Hexagonal box wrenches - 5mm
- Open-end wrench - 12mm, 22mm
- Phillips head screw driver
- Snap ring pliers

**Miscellaneous:**

- Assembly Oil—turbine oil none additional class 1 (equivalent to ISA VG32 grade)
- Urea grease grade (NLGI) No. 2
- Thread locking agent (equivalent to LOCTITE® 243)

**Customer Notes**

Model #: \_\_\_\_\_  
 Description: \_\_\_\_\_  
 Serial #: \_\_\_\_\_  
 Date Installed: \_\_\_\_\_  
 Department Location: \_\_\_\_\_  
 Tag/Project: \_\_\_\_\_