

### SPECIFICATIONS:

**MODEL NUMBER:** 8006-913-238

**PUMP DESIGN:** Positive Displacement 3 Chamber Diaphragm Pump

**CHECK VALVE:** (1-Way Operation) Prevents Reverse Flow

**CAM:** 3.0 Degree

**MOTOR:** Permanent Magnet, P/N 11-150-17, Thermally Protected

**VOLTAGE:** 115 VAC Nominal

**PRESSURE SWITCH:** Adjustable Shut-Off (Range 80-100 PSI)

Factory Set @100 PSI, Turn On 85 PSI  $\pm 5$  PSI

**LIQUID TEMPERATURE:** 180 Degrees Fahrenheit (82 Degrees Centigrade) Max.

**PRIME:** Self-Priming Up To 11 Ft. Vertical,  
Max. Inlet Pressure 30 PSI (2.1 Bar)

**PORTS:** 3/8"-18 NPT Female

**MATERIAL OF CONSTRUCTION:**

**PLASTICS-** Nylon

**VALVES-** EPDM

**DIAPHRAGM-** Santoprene

**FASTENERS-** Zinc or Cad Plated Steel

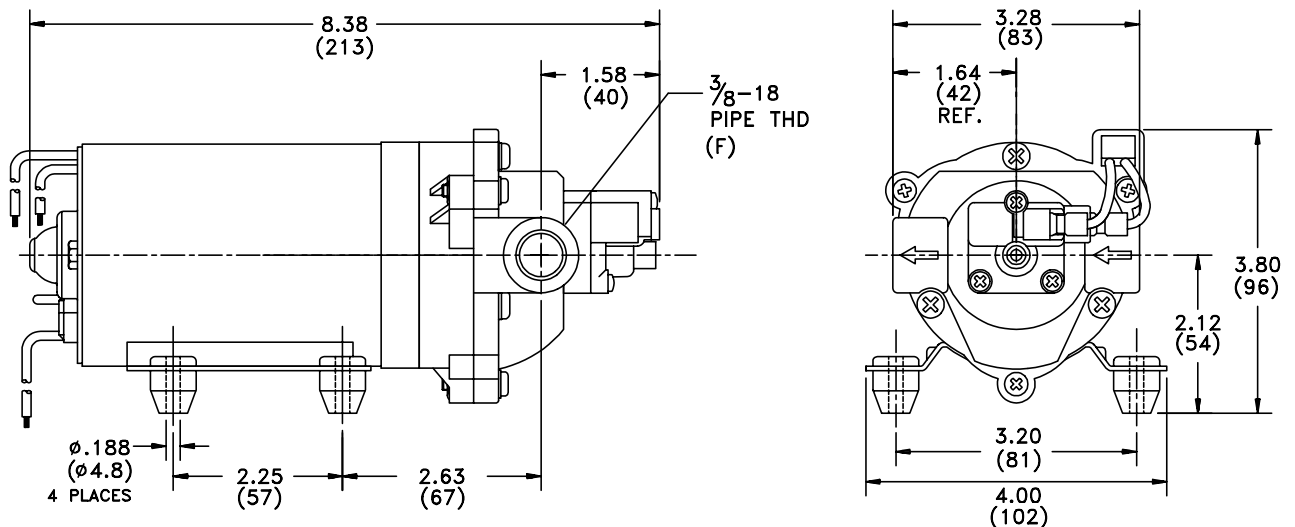
**NET WEIGHT:** 4.9 Lbs (2.22 Kg)

**DUTY CYCLE:** Intermittent (See Temperature Rise Chart)

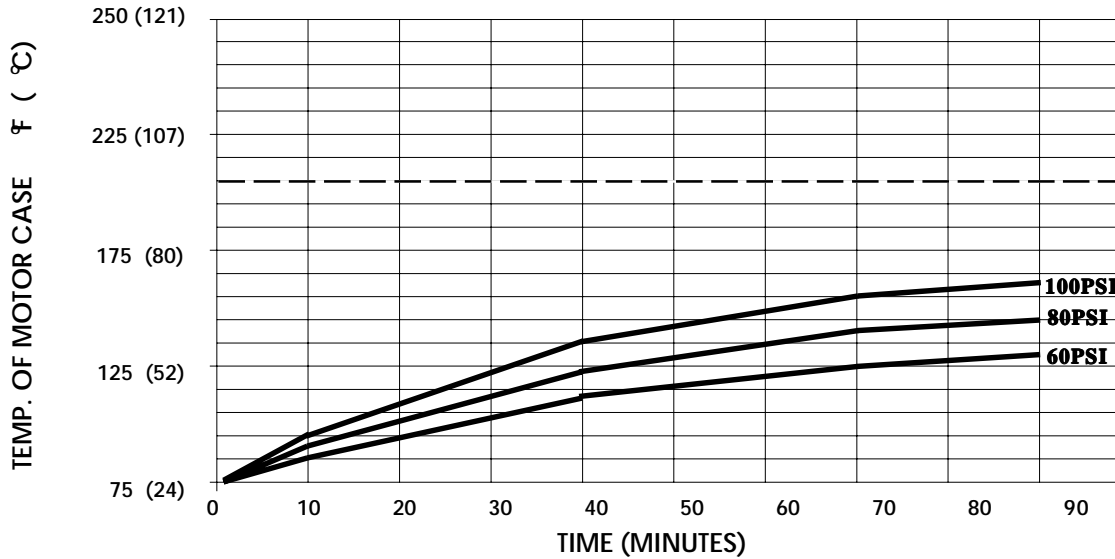
**APPROVALS:** UL/CSA Recognized Component

**TYPICAL APPLICATIONS:** Soil Extraction

### DIMENSIONS:



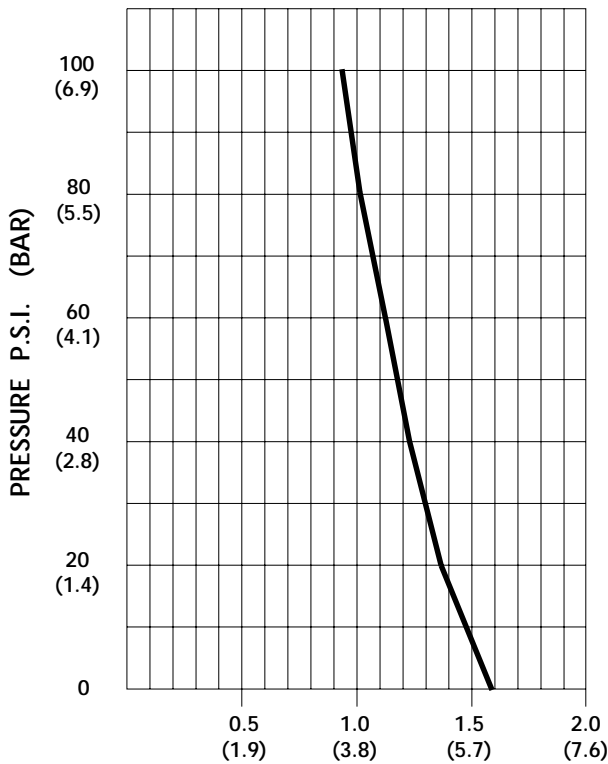
**TEMPERATURE RISE**



THIS GRAPH IS FOR USE AS A DESIGN GUIDE. IT IS BASED ON RUNNING CONTINUOUSLY WITH AN AMBIENT TEMPERATURE OF 75°F IN STILL AIR. THE THERMAL BREAKER WILL OPEN WHEN THE CASE TEMPERATURE REACHES 205° F.

[----- TRIP POINT OF THERMAL PROTECTOR]

**TYPICAL PERFORMANCE**



PRESSURE (PSI)	FLOW (GPM/LIT)	RPM MIN/MAX	CURRENT (AMPS)	VOLTAGE (VOLTS)
OPEN	<b>1.60/6.0</b>	<b>2115/2140</b>	<b>0.35</b>	<b>115VAC</b>
10	<b>1.46/5.5</b>	<b>2055/2065</b>	<b>0.40</b>	"
20	<b>1.37/5.2</b>	<b>1985/2000</b>	<b>0.45</b>	"
30	<b>1.30/4.9</b>	<b>1920/1940</b>	<b>0.50</b>	"
40	<b>1.23/4.6</b>	<b>1860/1885</b>	<b>0.54</b>	"
50	<b>1.20/4.5</b>	<b>1810/1825</b>	<b>0.58</b>	"
60	<b>1.12/4.2</b>	<b>1760/1775</b>	<b>0.62</b>	"
70	<b>1.06/4.0</b>	<b>1715/1725</b>	<b>0.67</b>	"
80	<b>1.02/3.9</b>	<b>1665/1680</b>	<b>0.70</b>	"
90	<b>0.96/3.6</b>	<b>1620/1635</b>	<b>0.74</b>	"
100	<b>0.94/3.5</b>	<b>1580/1590</b>	<b>0.78</b>	"

FLOW - GALLONS PER MINUTE (LITERS PER MINUTE)

*-SPECIFICATIONS SUBJECT TO CHANGE WITHOUT NOTICE.*

*-ALL DATA BASED ON TESTING WITH WATER.*