

SPECIFICATIONS:

MODEL NUMBER: 8006-543-236

PUMP DESIGN: Positive Displacement 3 Chamber Diaphragm Pump

CHECK VALVE: (1-Way operation prevents reverse flow)

CAM: 3.0

MOTOR: 11-111-07 Permanent Magnet

VOLTAGE: 12 VDC Nominal

PRESSURE SWITCH: Adjustable Shut-off (Range 40-60 PSI)

Factory set @ 60 PSI, Turn on 45 ± 5 PSI

LIQUID TEMPERATURE: 170 Degrees Fahrenheit (82 Degrees Centigrade)

PRIME: Self Priming up to 10 Ft. Vertical

PORTS: 3/8" -18 NPT Female

MATERIAL OF CONSTRUCTION:

PLASTICS- Polypropylene

VALVES- Viton

DIAPHRAGM- Santoprene (Solid)

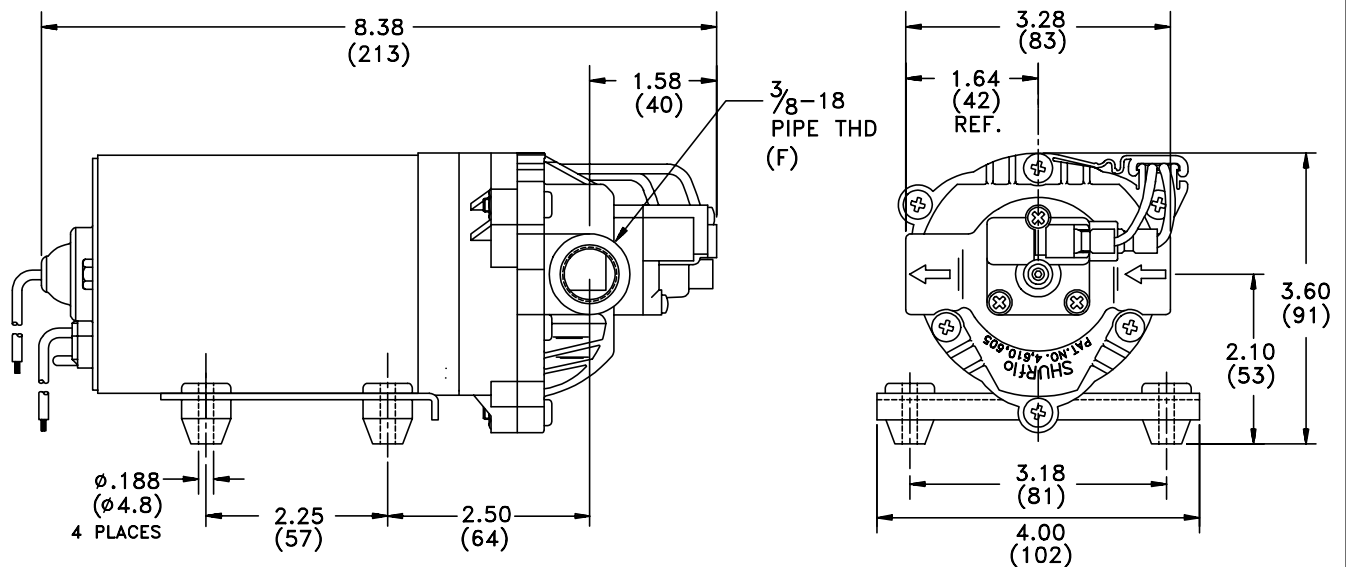
FASTENERS- Stainless Steel

NET WEIGHT: 4.6 Lbs (2.08Kg)

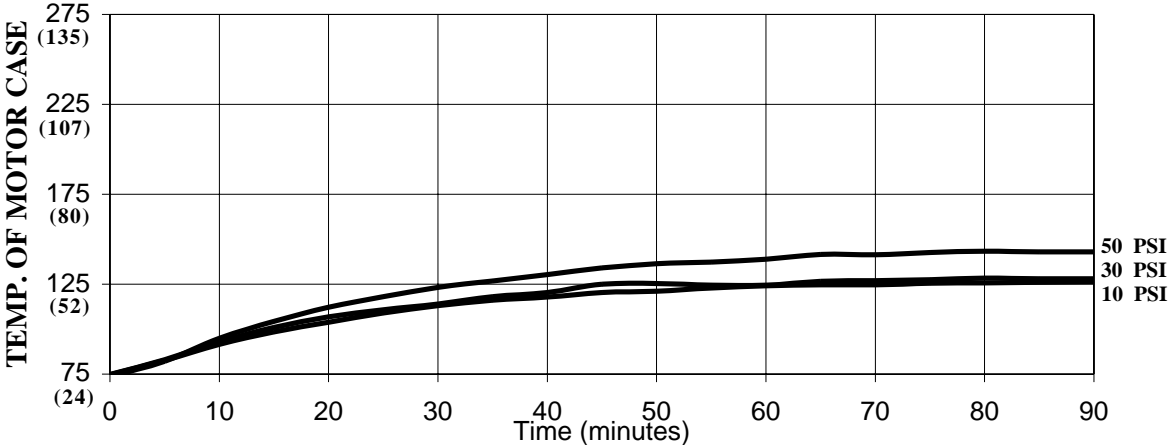
DUTY CYCLE: Intermittent (See Temperature Rise Chart)

TYPICAL APPLICATIONS: Agricultural Spraying

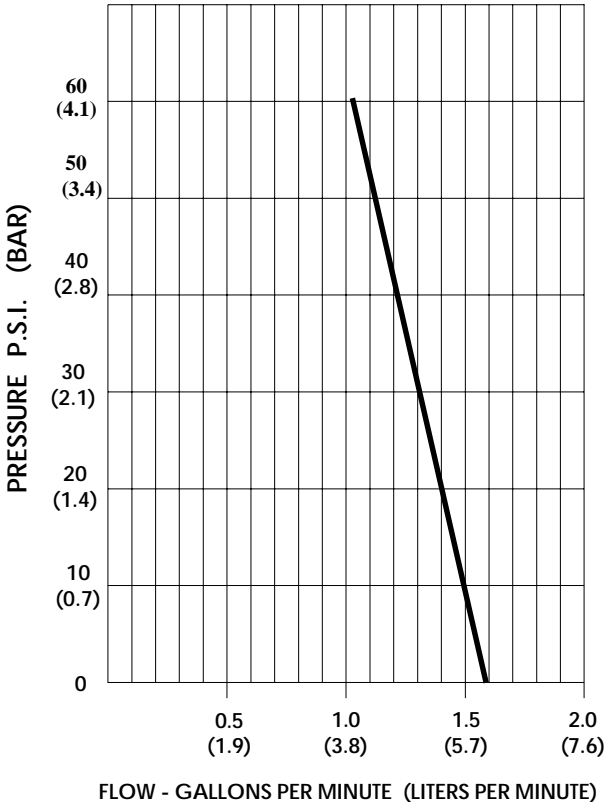
DIMENSIONS:



TEMPERATURE RISE



TYPICAL PERFORMANCE



PRESSURE (PSI)	FLOW (GPM/LIT)	CURRENT (AMPS)	VOLTAGE (VOLTS)
OPEN	1.55/5.9	3.0	12VDC
10	1.52/5.8	3.5	
20	1.45/5.5	4.2	
30	1.39/5.3	4.8	
40	1.33/5.0	5.4	
60	1.20/4.5	6.5	

*-SPECIFICATIONS SUBJECT TO CHANGE WITHOUT NOTICE.
 -ALL DATA BASED ON TESTING WITH WATER AT AMBIENT TEMPERATURE.*