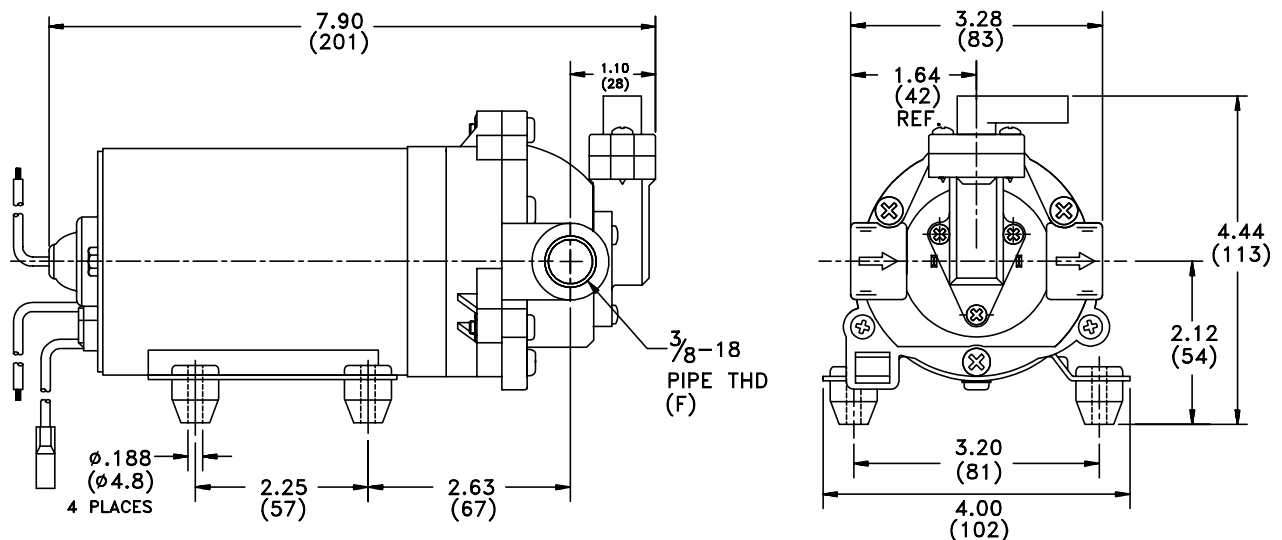


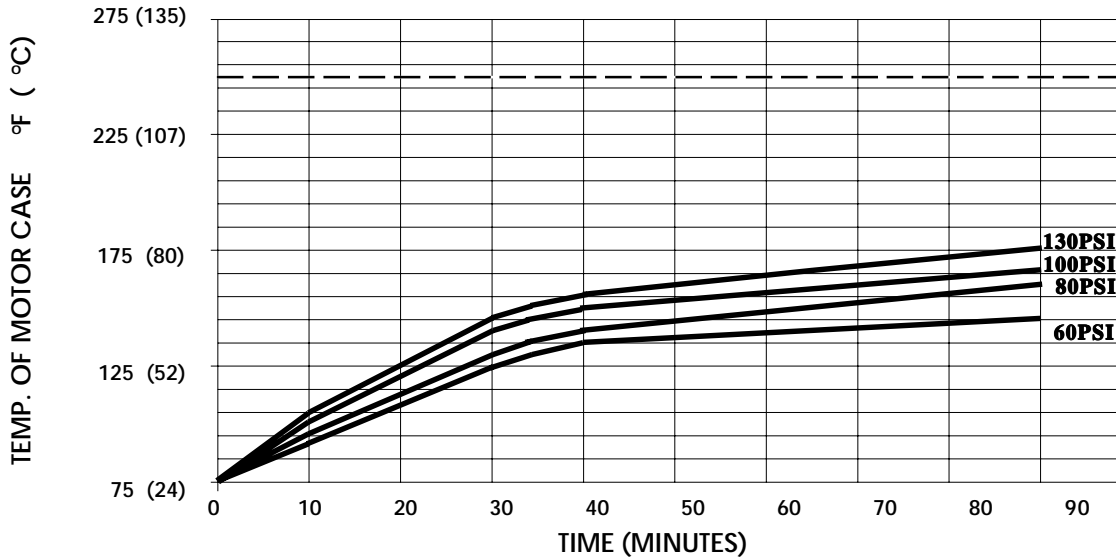
**SPECIFICATIONS:**

**MODEL NUMBER:** 8000-802-639  
**PUMP DESIGN:** Positive Displacement 3 Chamber Diaphragm Pump  
**CAM:** 2.5 Degree  
**MOTOR:** Permanent Magnet, P/N 11-160-10, Thermally Protected  
**VOLTAGE:** 230 VAC Nominal  
**PRESSURE SWITCH:** Adjustable Bypass  
**LIQUID TEMPERATURE:** 180 Degrees Fahrenheit (82 Degrees Centigrade) Max.  
**PRIME:** Self-Priming Up To 12 Ft. Vertical,  
 Max. Inlet Pressure 30 PSI (2.1 Bar)  
**PORTS:** 3/8"-18 NPT Female  
**MATERIAL OF CONSTRUCTION:**  
**PLASTICS-** Nylon  
**VALVES-** Viton  
**DIAPHRAGM-** Santoprene  
**FASTENERS-** Zinc Plated Steel  
**NET WEIGHT:** 4.7 Lbs (2.14 Kg)  
**DUTY CYCLE:** Intermittent (See Temperature Rise Chart)  
**TYPICAL APPLICATIONS:** Soil Extraction  
**BYPASS:** 140 PSI Max.

**DIMENSIONS:**



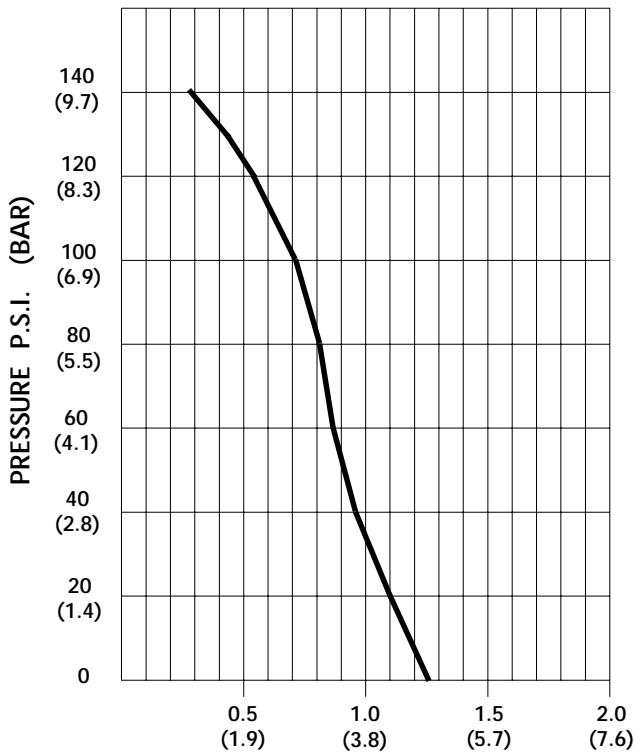
**TEMPERATURE RISE**



THIS GRAPH IS FOR USE AS A DESIGN GUIDE. IT IS BASED ON RUNNING CONTINUOUSLY WITH AN AMBIENT TEMPERATURE OF 75 °F IN STILL AIR. THE THERMAL BREAKER WILL OPEN WHEN THE CASE TEMPERATURE REACHES 120° C.

[----- TRIP POINT OF THERMAL PROTECTOR]

**TYPICAL PERFORMANCE**



PRESSURE (PSI)	FLOW (GPM/LIT)	RPM MIN/MAX	CURRENT (AMPS)	VOLTAGE (VOLTS)
OPEN	1.27/4.8	2520/2580	0.20	230VAC
10	1.22/4.6	2440/2510	0.23	"
20	1.11/4.2	2375/2435	0.24	"
30	1.00/3.8	2335/2365	0.26	"
40	0.95/3.6	2280/2300	0.29	"
50	0.92/3.5	2215/2250	0.31	"
60	0.88/3.3	2165/2195	0.32	"
70	0.84/3.2	2120/2140	0.34	"
80	0.81/3.1	2075/2100	0.36	"
100	0.72/2.7	1995/2005	0.40	"
120	0.54/2.0	1920/1930	0.43	"
140	0.29/1.1	1845/1850	0.46	"

FLOW - GALLONS PER MINUTE (LITERS PER MINUTE)

*-SPECIFICATIONS SUBJECT TO CHANGE WITHOUT NOTICE.*

*-ALL DATA BASED ON TESTING WITH WATER.*