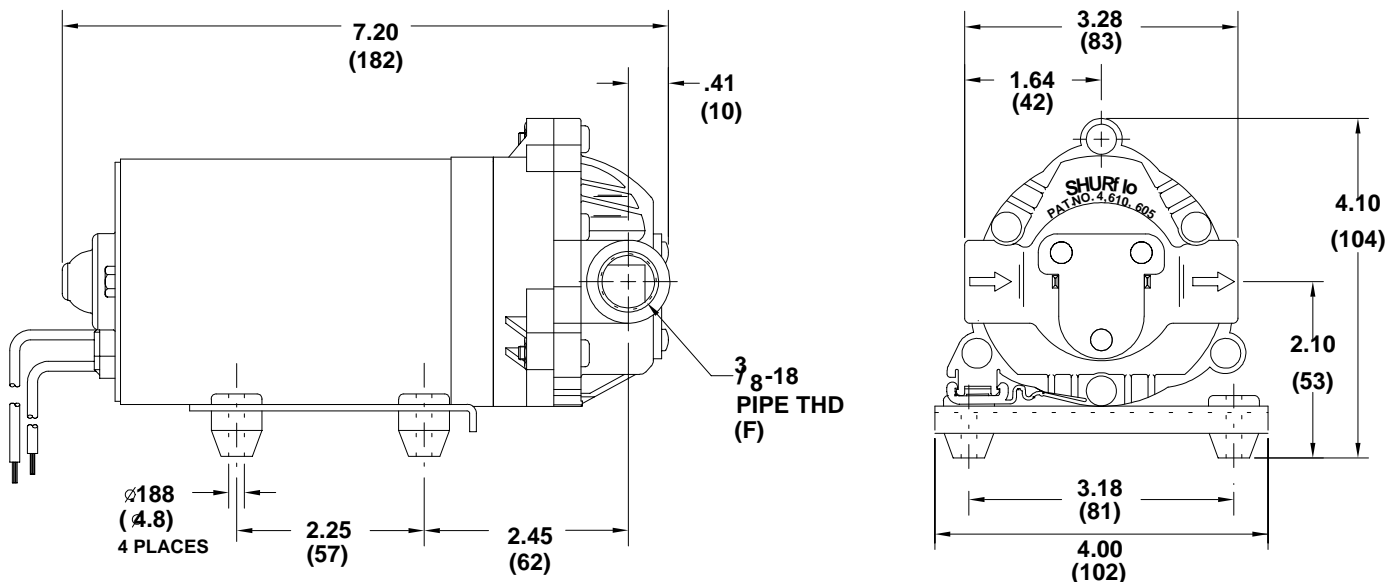


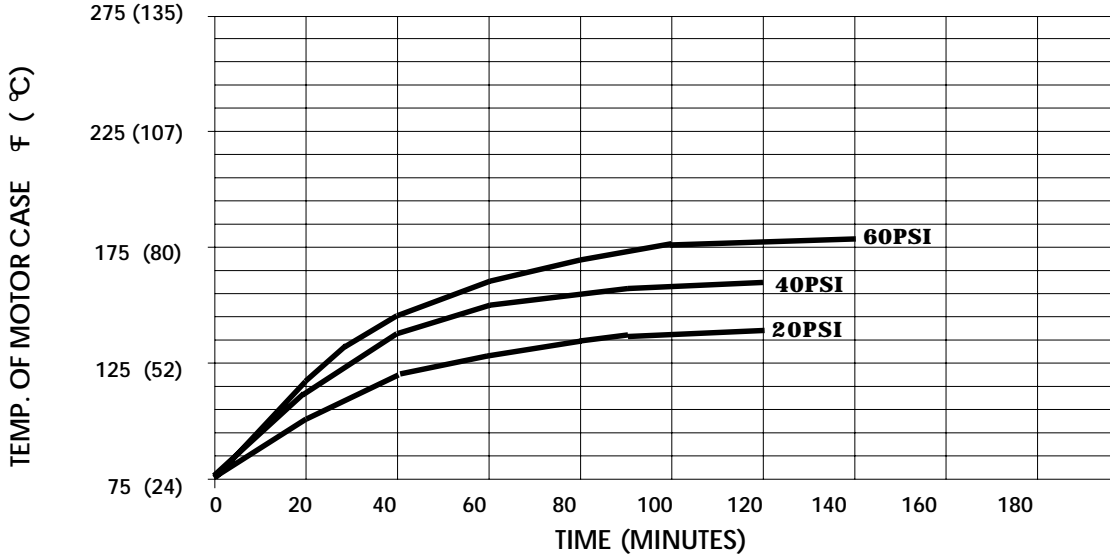
**SPECIFICATIONS:**

**MODEL NUMBER:** 8000-543-220  
**PUMP DESIGN:** Positive Displacement 3 Chamber Diaphragm Pump  
**CAM:** 3.0 Degree  
**MOTOR:** Permanent Magnet, P/N 11-111-00  
**VOLTAGE:** 12 VDC Nominal  
**PRESSURE SWITCH:** None  
**LIQUID TEMPERATURE:** 170 Degrees Fahrenheit (77 Degrees Centigrade) Max.  
**PRIME:** Self-Priming Up To 11 Ft. Vertical,  
 Max. Inlet Pressure 30 PSI (2.1 Bar)  
**PORTS:** 3/8"-18 NPT Female  
**MATERIAL OF CONSTRUCTION:**  
     **PLASTICS-** Polypropylene  
     **VALVES-** Viton  
     **DIAPHRAGM-** Santoprene  
     **FASTENERS-** Zinc Plated Steel  
**NET WEIGHT:** 4.5 Lbs (2.0 Kg)  
**DUTY CYCLE:** Continuous (See Temperature Rise Chart)  
**TYPICAL APPLICATIONS:** Soil Extraction, Water Delivery  
**BYPASS:** 60 PSI

**DIMENSIONS:**

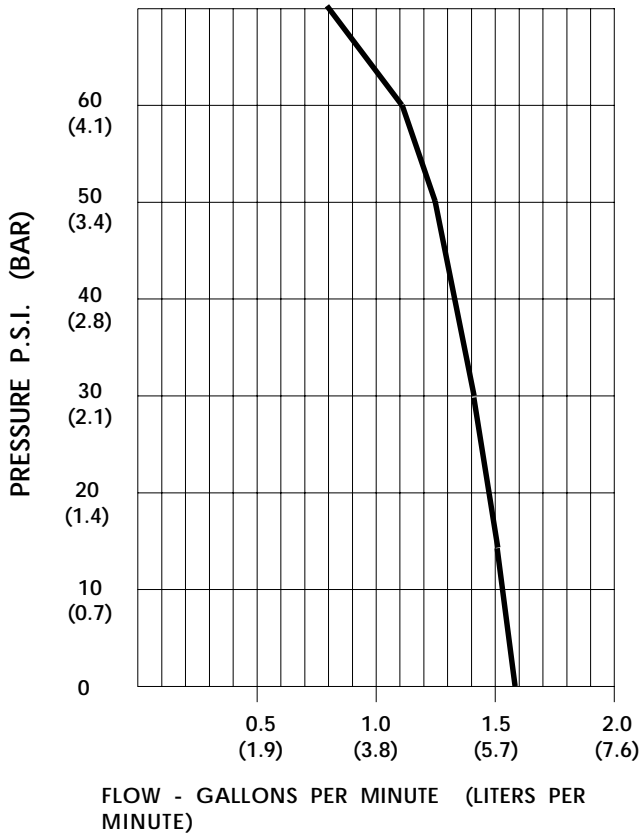


**TEMPERATURE RISE**



THIS GRAPH IS FOR USE AS A DESIGN GUIDE. IT IS BASED ON RUNNING CONTINUOUSLY WITH AN AMBIENT TEMPERATURE OF 75° F IN STILL AIR.

**TYPICAL PERFORMANCE**



PRESSURE (PSI)	FLOW (GPM/LIT)	RPM MIN/MAX	CURRENT (AMPS)	VOLTAGE (VOLTS)
OPEN	1.56/5.9	2210/2295	3.2	12VDC
10	1.52/5.7	2155/2255	3.8	"
20	1.45/5.5	2080/2185	4.5	"
30	1.39/5.3	2025/2120	5.2	"
40	1.33/5.0	1965/2065	5.8	"
50	1.25/4.7	1920/1965	6.5	"
60	1.12/4.2	1860/1935	7.1	"
70	0.80/3.0	1805/1890	7.7	"

*-SPECIFICATIONS SUBJECT TO CHANGE WITHOUT NOTICE.*

*-ALL DATA BASED ON TESTING WITH WATER AT AMBIENT TEMPERATURE.*