

### SPECIFICATIONS:

**MODEL NUMBER:** 5904-0201

**PUMP DESIGN:** 5 Chamber Diaphragm

**CAM:** 3.5

**MOTOR:** Permanent Magnet, Intermittent Duty

**MOTOR PROTECTION:** Thermal Overload, Automatic Restart

**VOLTAGE:** 12VDC

**SHUT-OFF:** Voltage Variant, Factory Set @ 60 PSI [3.1 Bar] ±5 PSI [0.4 Bar]

**LIQUID TEMPERATURE:** 130 F [54 C] Max

**PRIME:** 6 Feet [2.7 M]

**PORTS:** Quick Connect

**MATERIAL OF CONSTRUCTION:**

**PLASTICS-** Nylon

**VALVES-** EPDM

**DIAPHRAGM-** Santoprene

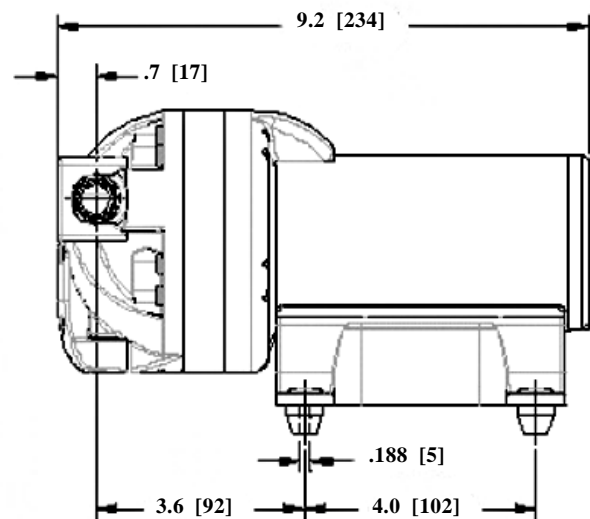
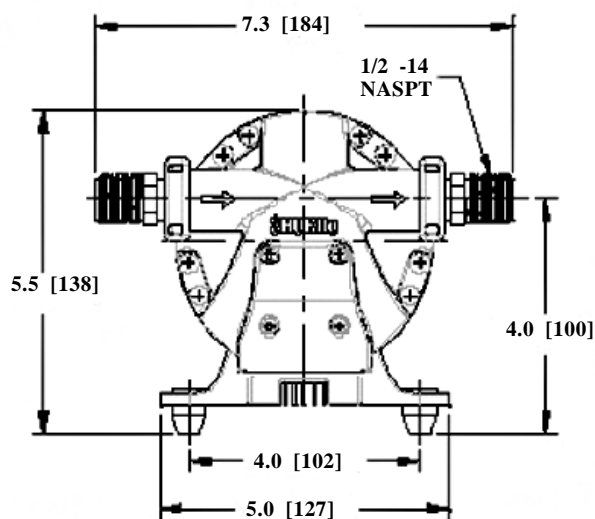
**FASTENERS-** Stainless Steel

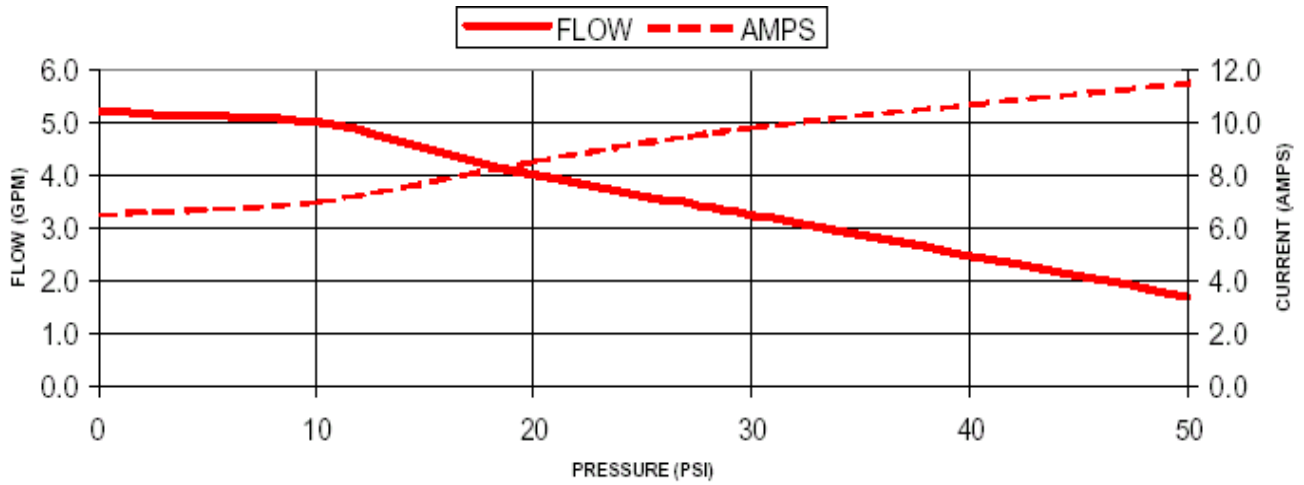
**NET WEIGHT:** 8.5 Lbs.

**DUTY CYCLE:** Intermittent

**TYPICAL APPLICATIONS:** Solar

### DIMENSIONS:





**TYPICAL PERFORMANCE @ 12V DC**

PRESSURE		FLOW		CURRENT
BAR	PSI	GPM	LPM	AMPS
0.0	0	5.20	19.7	6.50
0.7	10	5.00	19.0	7.00
1.4	20	4.00	15.0	8.50
2.1	30	3.25	12.3	9.80
3.5	50	1.70	6.40	11.5

**-SPECIFICATIONS SUBJECT TO CHANGE WITHOUT NOTICE.**

**-ALL DATA BASED ON TESTING WITH WATER AT AMBIENT TEMPERATURE.**