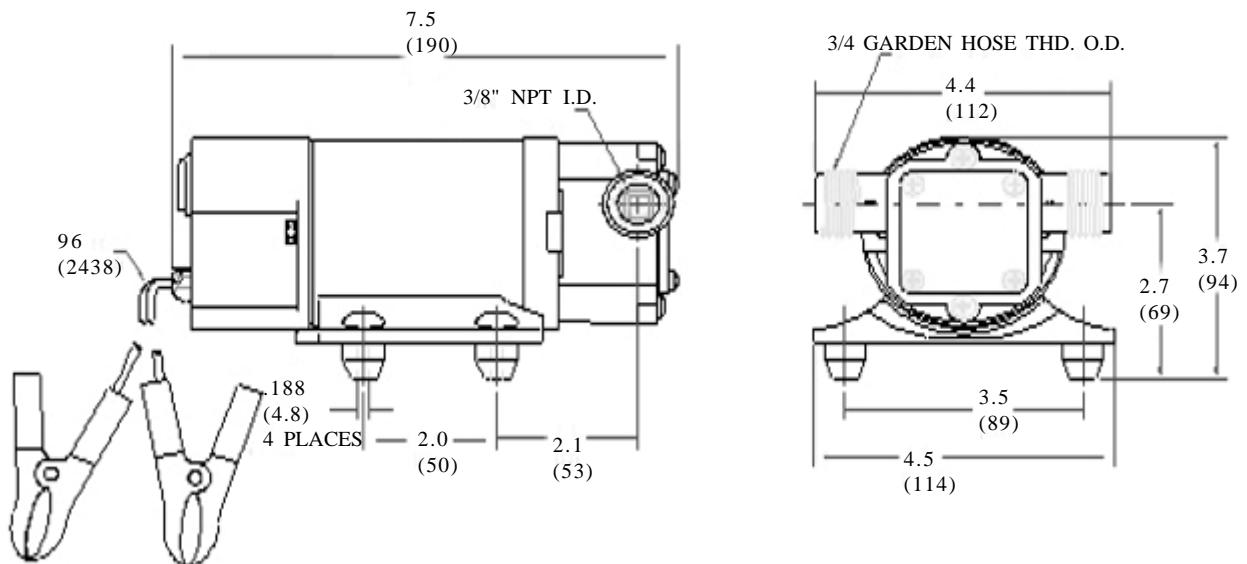


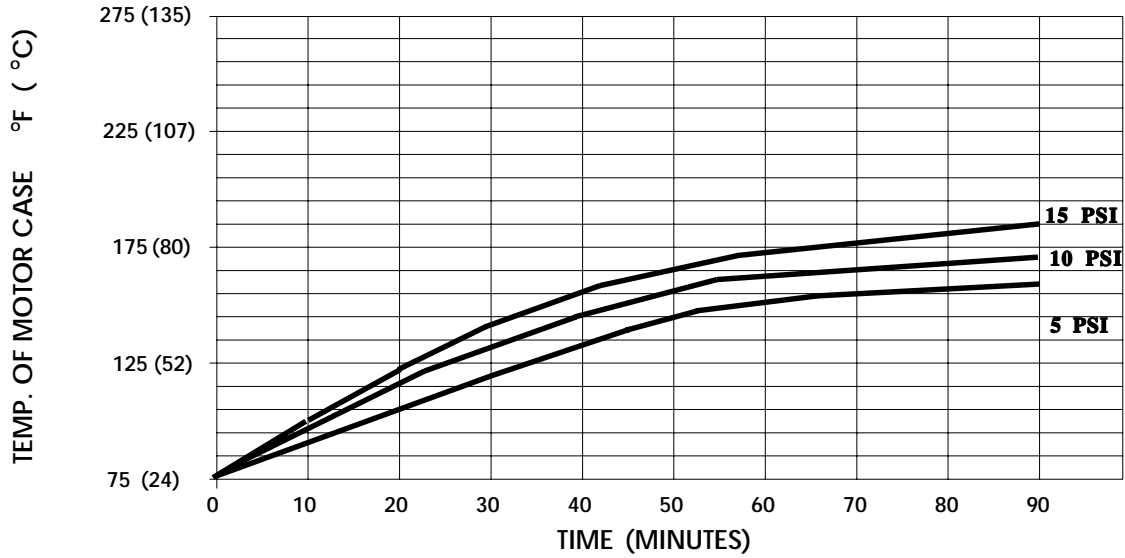
SPECIFICATIONS:

- MODEL NUMBER:** 3000-350
- PUMP DESIGN:** Flexible Impeller Pump With 3-Way Switch & 8 Ft. [2.4 M] Cable
With Battery Clips
- REVERSIBLE FLOW:** Yes
- VOLTAGE:** 12 VDC Nominal
- MOTOR:** Permanent Magnet, Thermally Protected
- OPERATING PRESSURE:** 15 PSI (1.0 Bars) Max.
- LIQUID TEMPERATURE:** 40 °F to 185 °F Max. [4 °C to 85 °C]
- PRIMING:** Self-Priming Up to 7.5 FT [2.3 M] Vertical Prime,
25 FT [7.6 M] Horizontal Prime (With Water)
- PORTS:** 3/4" Garden Hose Thread (O.D.), 3/8" NPT (I.D.)
- MATERIAL OF CONSTRUCTION:**
 - PLASTICS-** Glass Filled Polyester
 - IMPELLER-** Buna-n
 - LIP SEAL-** Buna-n
 - FASTENERS-** Stainless Steel
- NET WEIGHT:** 3.8 Lbs (1.7 Kg)
- DUTY CYCLE:** Intermittent (See Temperature Rise Chart)
- AGENCY CERTIFICATION:** None
- TYPICAL APPLICATIONS:** General Purpose Transfer Pump

DIMENSIONS: inches (millimeters)

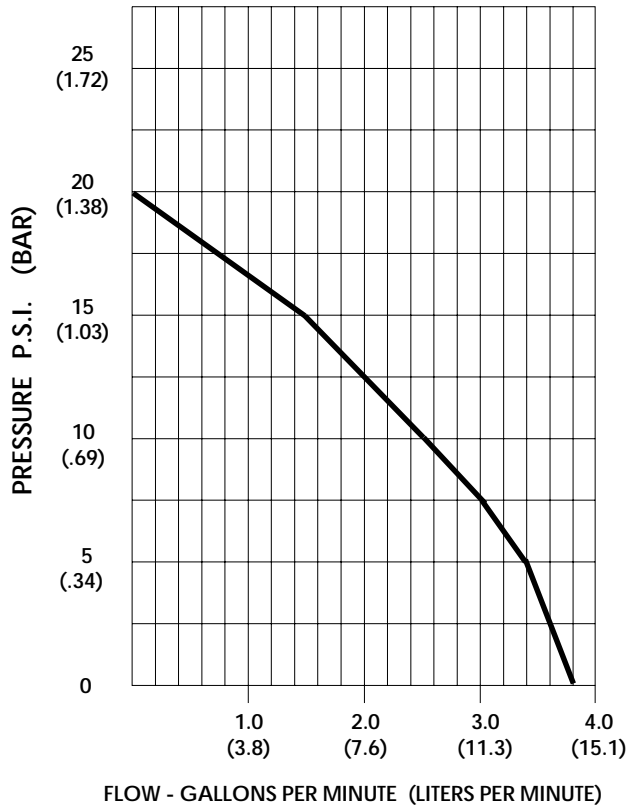


TEMPERATURE RISE



THIS GRAPH IS FOR USE AS A DESIGN GUIDE. IT IS BASED ON RUNNING CONTINUOUSLY WITH AN AMBIENT TEMPERATURE OF 70° F IN STILL AIR.

TYPICAL PERFORMANCE



PRESSURE (PSI/BAR)	FLOW (GPM/LIT)	CURRENT (AMPS)	VOLTAGE (VOLTS)
OPEN	3.8/14.2	6.5	12 VDC
5/3.4	3.4/12.9	7.1	"
10/6.9	2.5/9.5	7.4	"
15/1.03	1.5/5.7	8.0	"
20/1.38	0	9.1	"

*-SPECIFICATIONS SUBJECT TO CHANGE WITHOUT NOTICE.
-ALL DATA BASED ON TESTING WITH WATER.*