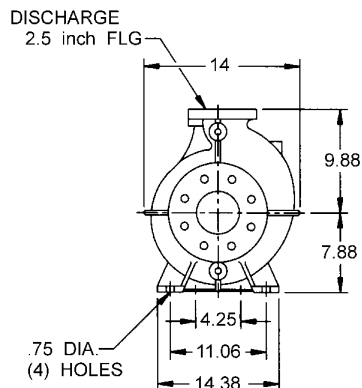
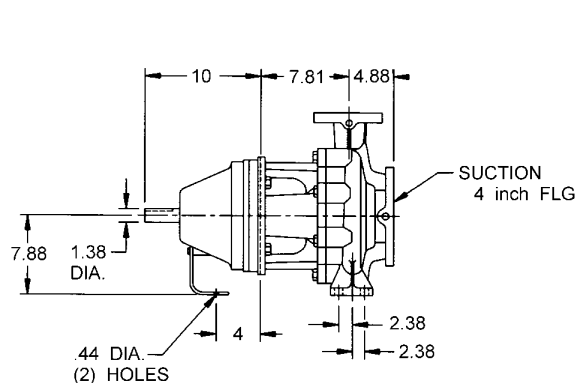
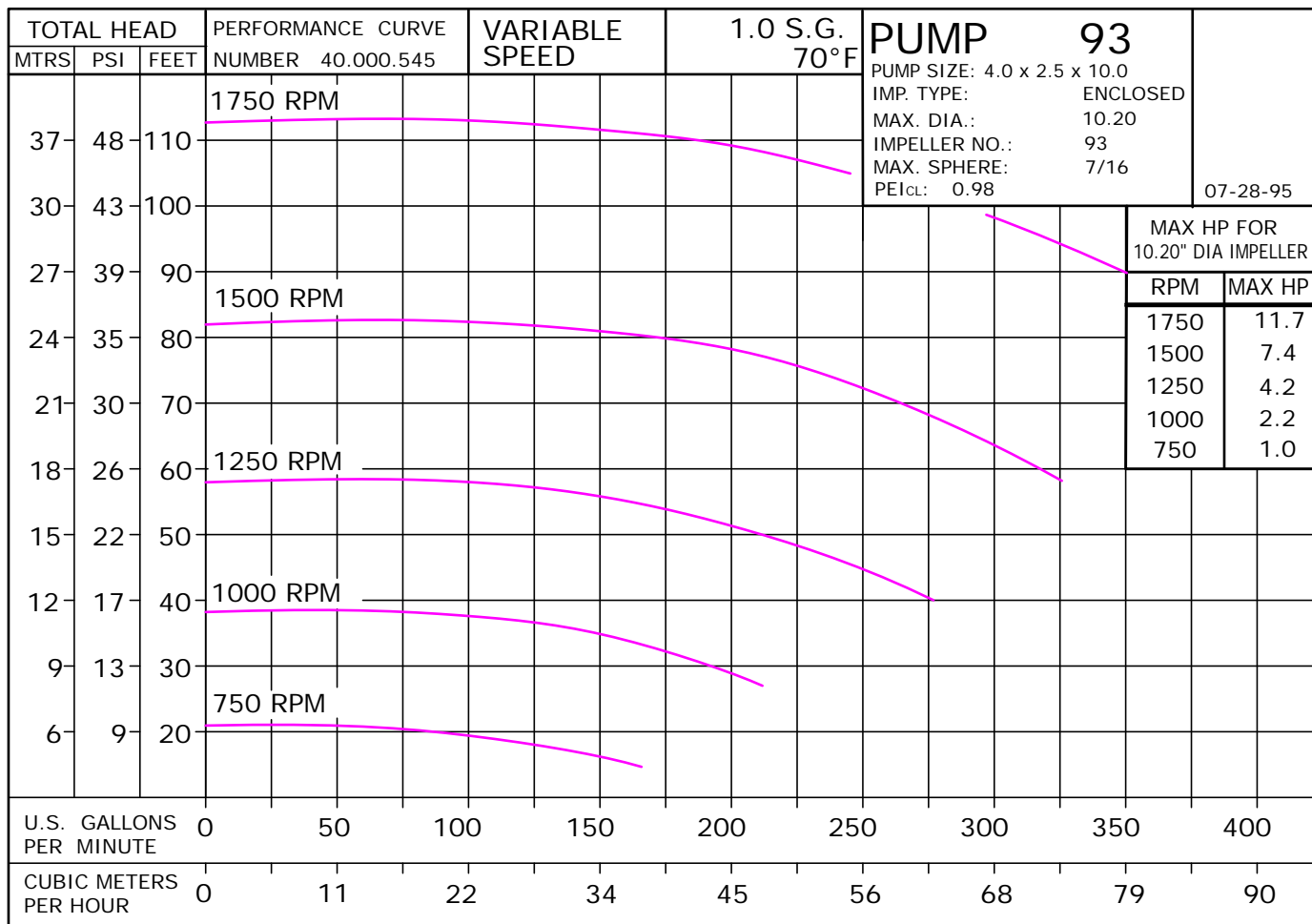


1 3/8" SHAFT, 4 X 2.5 X 10.25 ANSI FLG



ALL DIMENSIONS IN INCHES

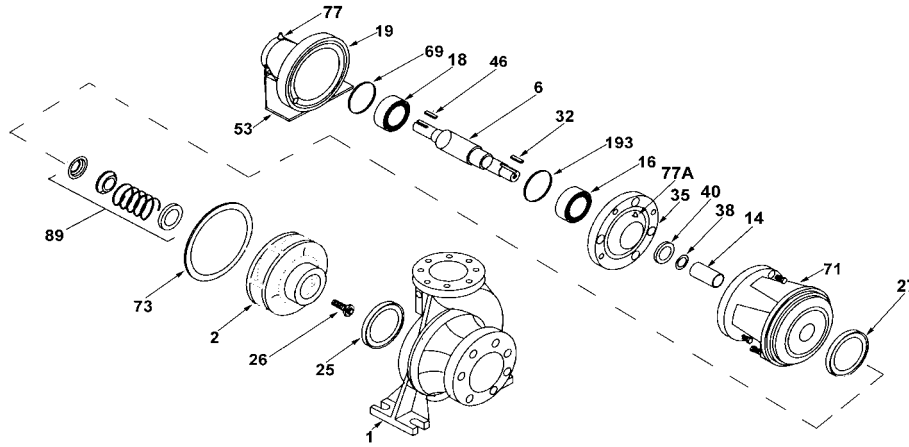


D1297
102JP211 934VS

93
JP211

093JP211
81.001.290 M19

PUMP 93 • Iron • 1 3/8" Shaft • JP211



E1023

| KEY NO. | PART NAME | PUMP NO. 93 |
|---------|---|---|
| 1+ | CASE, IRON, 4 x 2.5 FLG | 130.000.305X |
| 2 | IMPELLER, 1 1/4" KEYED, ENCLOSED, SPECIFY DIAMETER: IRON | 137.000.159 |
| 14* | SHAFT SLEEVE BRONZE STAINLESS | 110.000.398 110.000.360 |
| 25 | WEAR RING BRONZE STEEL | 103.000.201 103.000.189 |
| 26* | IMPELLER RETAINER, STAINLESS | 118.000.640 |
| 27 | WEAR RING BRONZE STEEL | 103.000.202 103.000.189 |
| 32* | KEY, STAINLESS | 102.000.282 |
| 38* | O-RING, SHAFT BUNA VITON | 116.000.218 116.000.218A |
| 40* | FLINGER, STAINLESS | 104.000.200 |
| 71 | ADAPTER, IRON | 132.000.361X |
| 73* | GASKET, CASE | 116.000.267 |
| 89* | 1 1/4" SEALS: TYPE 21, BN-CARB/CM TYPE 21, VN-CARB/CM TYPE 21, VN-CARB/SIL TYPE 21, VN-SIL/SIL TYPE 21, EPDM-CARB/SIL TYPE 21, EPDM-SIL/SIL | 101.000.196 101.000.216 101.000.221 101.000.231 101.000.196B 137.001.555 |
| | BEARING FRAME ASS'Y CONSISTING OF: | JP211 118.000.417 |
| 6† | SHAFT, ASS'Y | 135.000.264X |
| 16 | BEARING | 103.000.210 |
| 18 | BEARING | 103.000.167 |
| 19 | SHELL | 137.000.411 |
| 35 | END BELL | 132.000.84 |
| 46† | KEY | 102.000.270E |
| 53 | BASE | 119.000.476A |
| 69 | WAVE SPRING | 119.000.458 |
| 77 | LUBE FITTING | 102.000.201 |
| 77A | LUBE ELBOW | 102.000.334 |
| 193 | RETAINER | 102.000.285 |
| -- | REPAIR KITS: TYPE 21, BN-CARB/CM TYPE 21, VN-CARB/CM TYPE 21, VN-CARB/SIL TYPE 21, VN-SIL/SIL TYPE 21, EPDM-CARB/SIL TYPE 21, EPDM-SIL/SIL | 118.000.404 118.000.404A 118.000.404B 118.000.404D 118.000.404C 118.000.404E |

* DENOTES COMPONENTS INCLUDED IN REPAIR KIT.
THE REPAIR KITS INCLUDE THE BRONZE SHAFT SLEEVE EXCEPT THE (S) INDICATED,
WHICH IS STAINLESS WITH VITON SHAFT O-RING.

+ INCLUDES BRONZE WEAR RING. FOR STEEL WEAR RING, REPLACE THE SUFFIX "X"
WITH "X1"

† DENOTES COMPONENTS INCLUDED WITH SHAFT ASSEMBLY