



OBERDORFER PUMPS

A Gardner Denver Product

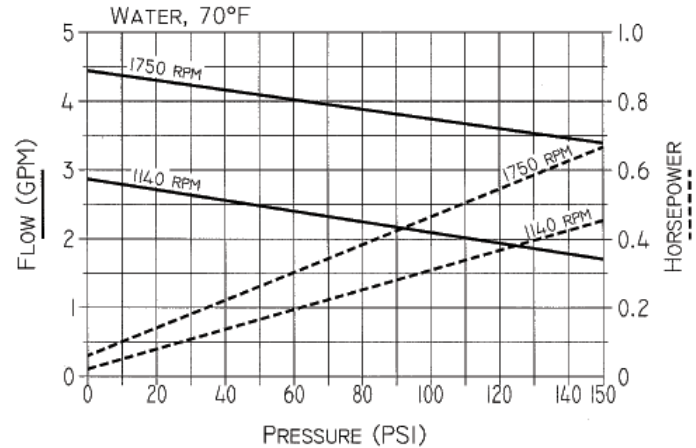
Close Coupled Bronze Rotary Gear Pumps Model N992 Series

3/8" NPT Ports Standard



Pump	Description	Pump	Description
N992	Standard Pump w/ 3/8" ports	N992S16	Pump w/ Buna N mechanical seal
N992R	Pump w/ 3/8" ports & relief valve	N992RS16	Pump w/ Buna N mech. seal & relief valve
N992S5	Pump w/ Viton® lipseal	N992S17	Pump w/ Viton mechanical seal
N992RS5	Pump w/ Viton® lipseal & relief valve	N992RS17	Pump w/ Viton mech. seal & relief valve

PERFORMANCE:



FEATURES:

- Rugged corrosion resistant bronze construction
- Compact close-coupled design
- Stainless steel shafts
- Durable bronze helical gears provide quiet operation
- Process lubricated carbon graphite bearings
- O-ring cover seal for maximum leak protection
- Lip Seal or Mechanical Seal
- Easy field assembly to a variety of motor frames
 - For typical DC motor pump units see N992 DC
 - For compact AC motor pump units see Close Coupled Bronze Adapterless Rotary Gear Pumps
 - For Danfoss hydraulic motor driven pump units see adapter 9960
- For bronze pedestal pumps see model N2000
- For close-coupled ductile iron pumps see model C992 plug

GENERAL DESCRIPTION:

Pump housings and gears are made of top quality bronze, shafts are 303 stainless steel. Bearings are designed of high performance carbon-graphite material selected for wear resistance and long service life.

Gear pumps are positive displacement pumps. Each shaft revolution displaces a definite amount of liquid relatively unaffected by the back pressure in the discharge line. Shaft speed and flow are directly proportional. Recommended pressure limits are 100 PSI for water and non-lubricants, 150 PSI for oil and other lubricants. The maximum shaft speed is 1750 RPM.

SHAFT SEALS:

Close coupled gear pumps are normally supplied with a Buna N lip seal. For a Viton® Seal, add S5 to the pump model number. For Buna mechanical add S16. For Viton mechanical add S17.

LIQUIDS AND TEMPERATURE:

These pumps are suitable for all liquids that are compatible with bronze. Most common liquids are water, oil, and mild chemicals in the pH range of 4 to 11. Viscous liquids require reduced shaft speeds of 1150 RPM or lower. (Consult factory.)

Liquids containing solids, abrasives, powders, or paint pigments are definitely not recommended for gear pumps. If abrasives are unavoidable, use a very low shaft speed.

See pricebook for the recommended liquid temperature range of lip and mechanical seals. If more extreme temperature conditions exist, factory should be consulted. Freezing of water-filled pumps can cause damage and must be avoided. Oils at low temperatures are very viscous requiring a lower speed or extra power.

SUCTION LIFT:

As a general rule, the suction lift should be kept at an absolute minimum by placing the pump as close to the liquid source as possible. A gear pump in new condition can lift 20 feet of water in the suction line. A foot valve (preferably with built-in strainer) is recommended at the beginning of the suction line. For a first start-up, the pump should be primed to avoid dry running. Minimum size of the suction pipe is the size of the pump inlet port. For longer suction lines (over 3 feet) or for viscous liquids, the pipe should be at least one size or two sizes larger than the pump inlet port.

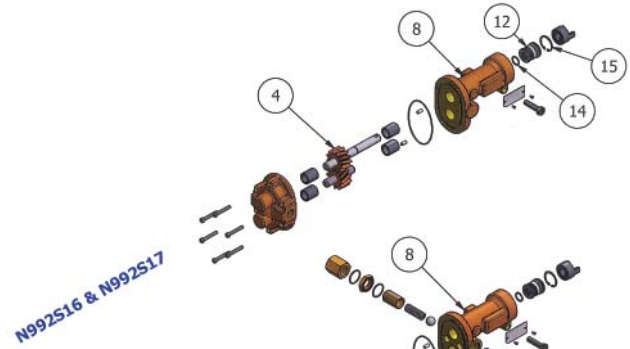
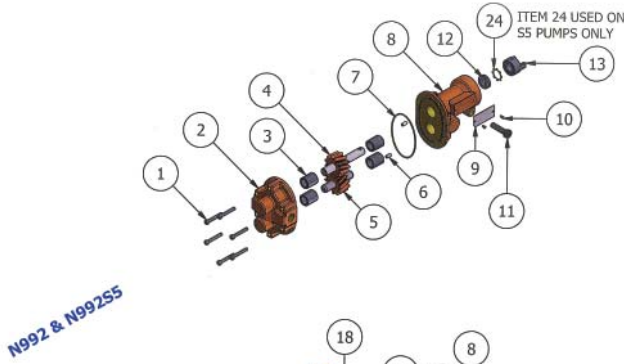
ROTATION AND RELIEF VALVE:

If the discharge line contains any throttling devices such as a shut-off valve, a spray nozzle or other restrictive device, it is necessary to have a relief valve in the system which returns the liquid to the suction side or to the tank. The relief valve is also available as part of the pump itself (R-model pumps). However, built-in relief valves are only good for intermittent service. If used continuously, the pump will overheat. A built-in relief valve is strictly a safety device against overpressure. It will not work successfully as a pressure or flow control device. For this purpose a separate relief valve in the pressure line must be used.

Unless otherwise specified, the pump motor unit is supplied by the factory for shaft rotation counterclockwise from shaft end. Reversing motor will reverse "in" and "out" ports and also requires changing relief valve location. The relief valve is always on the inlet side of this pump series. The factory pressure setting is 50 PSIG. To increase pressure, turn the relief valve adjusting screw in a clockwise direction.

Close Coupled Bronze Rotary Gear Pumps

Model N992 Series



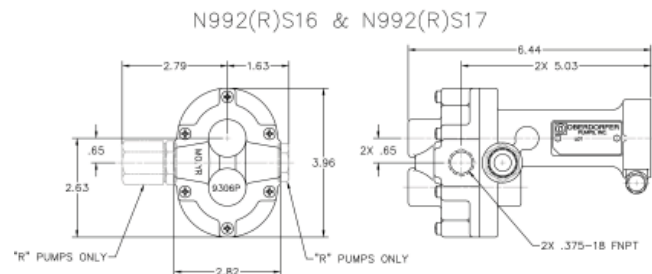
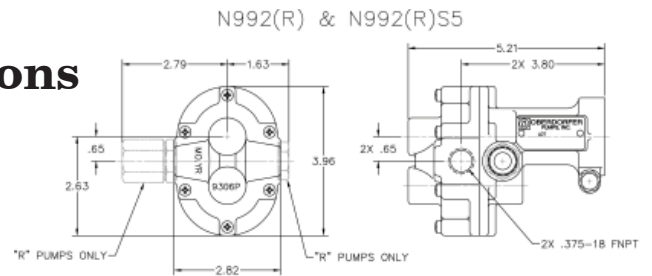
Exploded View and Parts List

	1	2	3	4	5	6	7	8	9	10	11	12	13	14	15	16	17	18	19	20	21	22	23	24	Repair Kits			
	Screw	Body	Bearing	Drive Gear	Idle Gear	Dowel	O-Ring	Cover	Tag	Tag	Screw	Lip Seal	Mechanical	Coupling	Retaining	Retaining	Ball	Spring	O-Ring	O-Ring	Nut	Adjust.	Lock	Nut	Lock			
Pump No.	Qty. 6	Qty. 1	Qty. 4	Qty. 1	Qty. 1	Qty. 2	Qty. 1	Qty. 1	Qty. 1	Qty. 2	Qty. 1	Qty. 1	Qty. 1	Qty. 1	Qty. 1	Qty. 1	Qty. 1	Qty. 1	Qty. 2	Qty. 1	Qty. 1	Qty. 1	Qty. 1	Qty. 1	Qty. 1			
N992	7733	9306NCSN	5024	32994	32993	8885	9797-038	9308NNZN	9344	9345	5595	5007	N/A	5604	N/A	N/A	N/A	N/A	N/A	N/A	N/A	N/A	N/A	N/A	N/A	N/A	10631	
N992R	7733	9306NCSN	5024	32994	32993	8885	9797-038	9308NN3B	9344	9345	5595	5007	N/A	5604	N/A	N/A	5803	1840	9797-019	9797-015	1838	5237	5240D	5239	N/A	N/A	11351	
N992S5	7733	9306NCSN	5024	32994	32993	8885	9797-038	9308NN2N	9344	9345	5595	7580	N/A	5604	N/A	N/A	N/A	N/A	N/A	N/A	N/A	N/A	N/A	N/A	N/A	N/A	7626	
N992RS5	7733	9306NCSN	5024	32994	32993	8885	9797-038	9308NN3B	9344	9345	5595	7580	N/A	5604	N/A	N/A	5803	1840	9797-019	9797-015	1838	5237	5240D	5239	7626	N/A	11351	
N992S16	7733	9306NCSN	5024	33341	32993	8885	9797-038	9309PN4N	9344	9345	5595	N/A	32584	5604	5373	7639	N/A	N/A	N/A	N/A	N/A	N/A	N/A	N/A	N/A	N/A	N/A	12396
N992RS16	7733	9306NCSN	5024	33341	32993	8885	9797-038	9309PN4B	9344	9345	5595	N/A	32584	5604	5373	7639	5803	6302	9797-019	9797-015	1838	5237	5240D	5239	N/A	N/A	12396	
N992S17	7733	9306NCSN	5024	33341	32993	8885	9797-038	9309PN4N	9344	9345	5595	N/A	32585	5604	5373	7639	N/A	N/A	N/A	N/A	N/A	N/A	N/A	N/A	N/A	N/A	N/A	12397
N992RS17	7733	9306NCSN	5024	33341	32993	8885	9797-038	9309PN4B	9344	9345	5595	N/A	32585	5604	5373	7639	5803	6302	9797-019	9797-015	1838	5237	5240D	5239	N/A	N/A	12397	

Repair Kits contain items 3, 4, 5, 7, 12, 14, 15 & 24.

Adapter Kits		
Adapter Kit	Part Number	Description
M	10562	48 Frame
N	10816	56 Frame
P	11722	S56 Frame
Q	11331	56C Frame (to 3/4 HP)
C	11331H	56C Frame (above 3/4 HP)
F	11332	IEC71
N/A	N/A	Adapterless - Modified 48

Dimensions



Viton® or equivalent FKM will be used. Viton® is a registered trademark of DuPont Dow Elastomers. Teflon® or equivalent PTFE will be used. Teflon® is a registered trademark of DuPont.



OBARDORFER PUMPS

A Gardner Denver Product

5900 Firestone Drive, Syracuse, NY 13206

Phone: (800) 448-1668; (315) 437-0361 • Fax: (315) 463-9561

Visit www.oberdorfer-pumps.com to find in-depth descriptions of the world's leading high-quality, dependable pumps.

Due to ongoing product improvements, data shown here is subject to change without notice. Contact Oberdorfer Pumps for latest specifications.